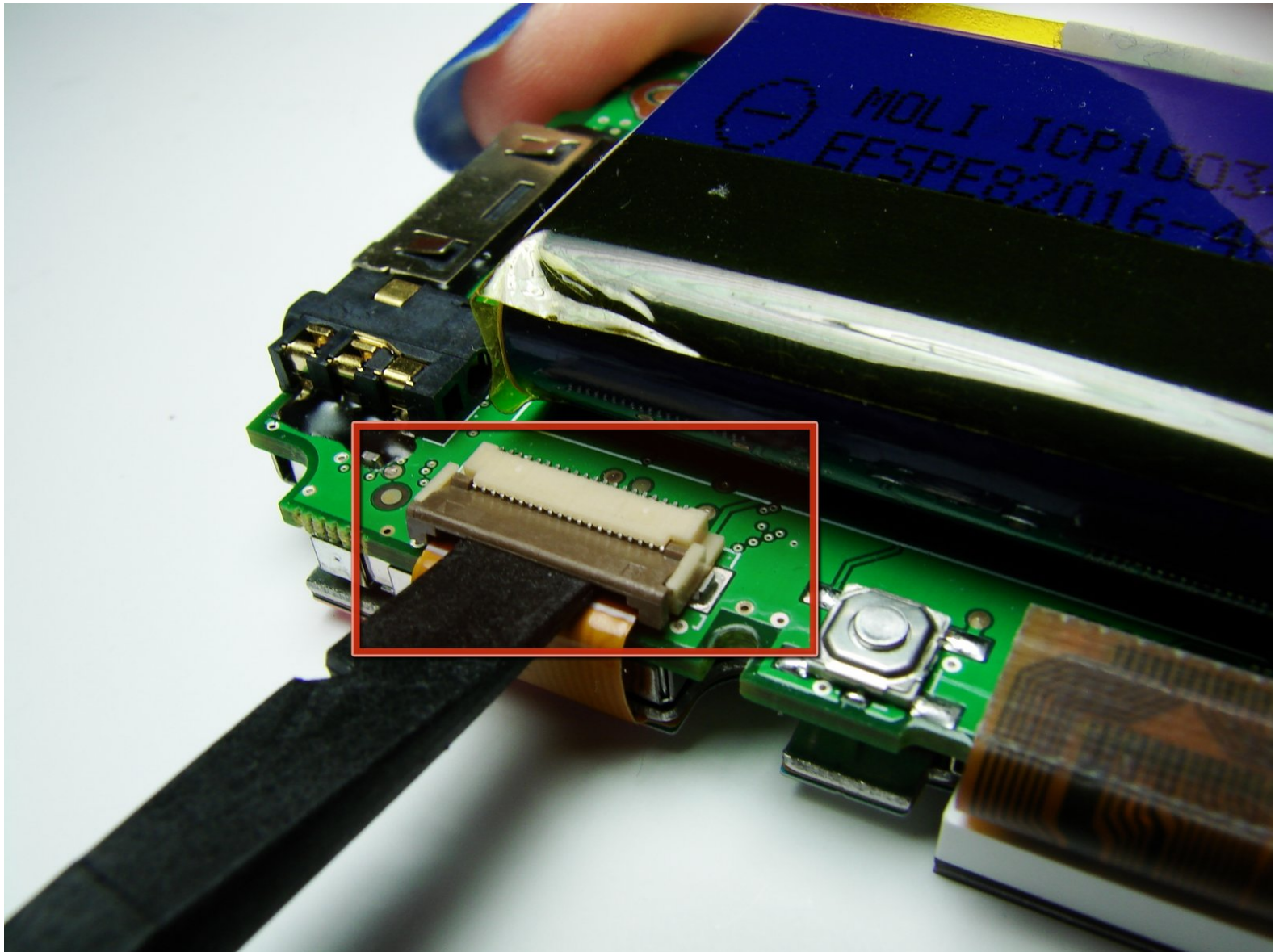




# Palm Treo 600 Keyboard Replacement

Written By: Clement Poisson



---

## INTRODUCTION

Replace the keyboard!!

---

### TOOLS:

- [iFixit Opening Tools](#) (1)
  - [Tweezers](#) (1)
  - [Spudger](#) (1)
-

## Step 1 — Back Case



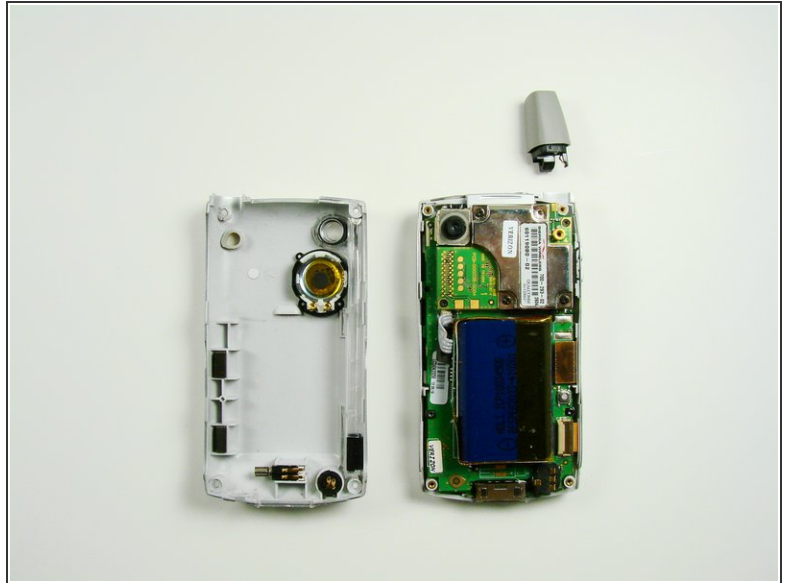
- On the back of the device, locate the 3 rubber plugs, and use a plastic spudger to remove them.

## Step 2



- Use the T6 Torx Screwdriver to remove all 4 screws.
- ⓘ You have to first remove the Stylus to access the 4th screw.

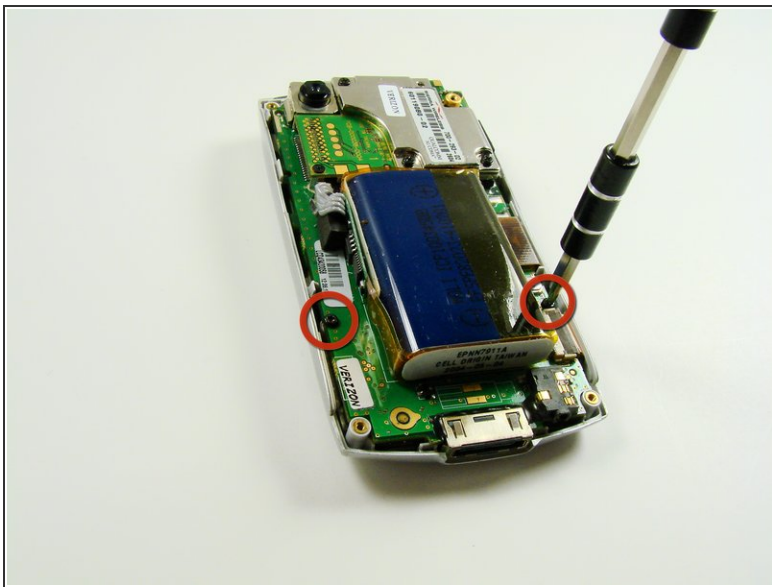
### Step 3



- Using a plastic opening tool, carefully separate the front and back cases.

**i** **Note:** The antenna will detach from the phone.

### Step 4 — Front Case

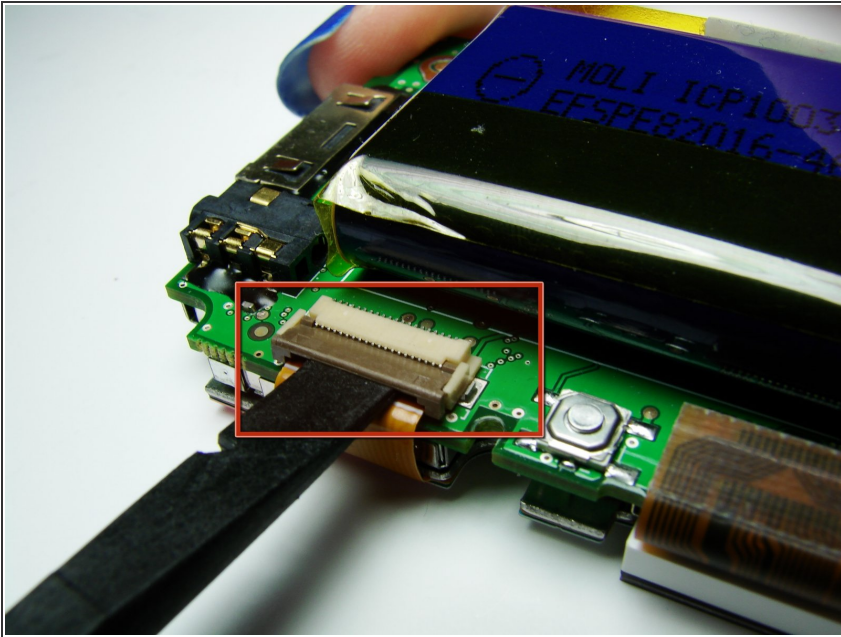


- Using a T6 Torx Screwdriver, remove the two screws.

**i** The motherboard will now be loose from the front case.

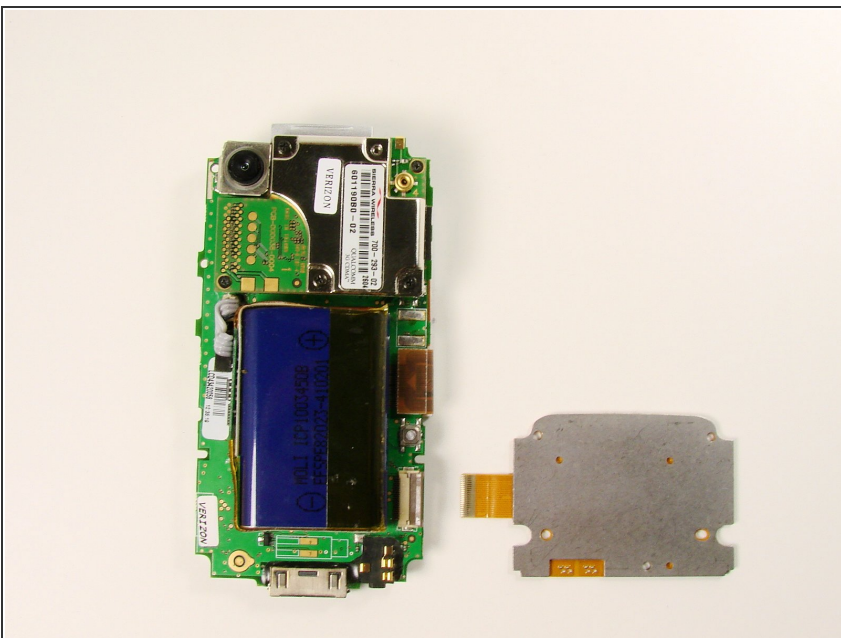


## Step 5 — Keyboard



- Using the spudger, flip open the clasp that holds the data ribbon in place.

## Step 6



- Pull out the ribbon.
- ⓘ The keyboard will disconnect from the phone.

To reassemble your device, follow these instructions in reverse order.