



# LG Cosmos 2 Speaker Replacement

The speaker is located near the bottom of the phone. Replacing it only requires disassembly of the rear case.

Written By: Nick White



 **TOOLS:**

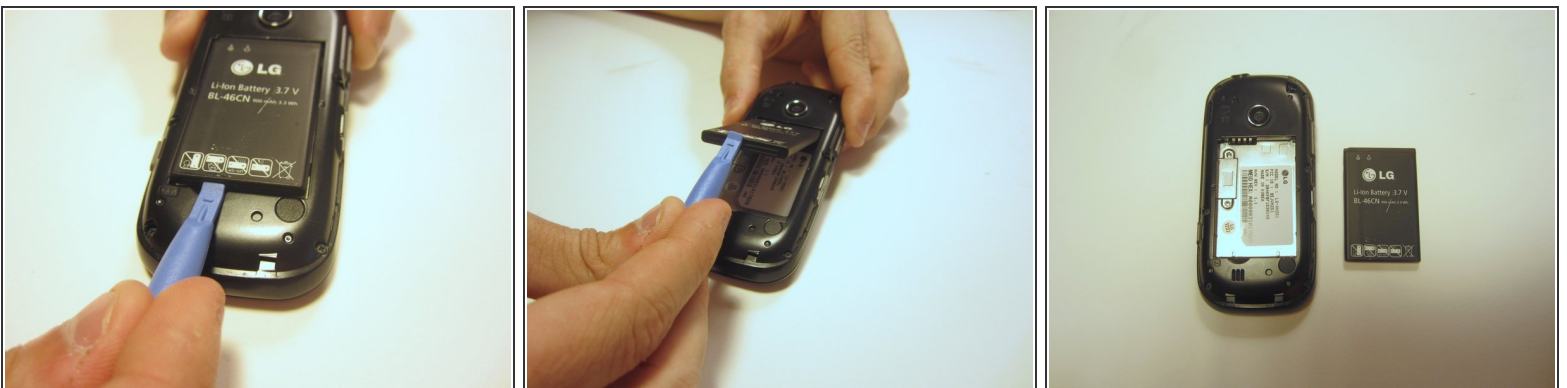
- [iFixit Opening Tools](#) (1)
  - [64 Bit Driver Kit](#) (1)
  - [Spudger](#) (1)
-

## Step 1 — Battery



- Insert the plastic opener into the slot at the top of the device.
- Apply gentle pressure with the plastic tool to pop the back case off.

## Step 2



- Use the plastic opener to lift, and remove, the device battery.

### Step 3 — Rear Case



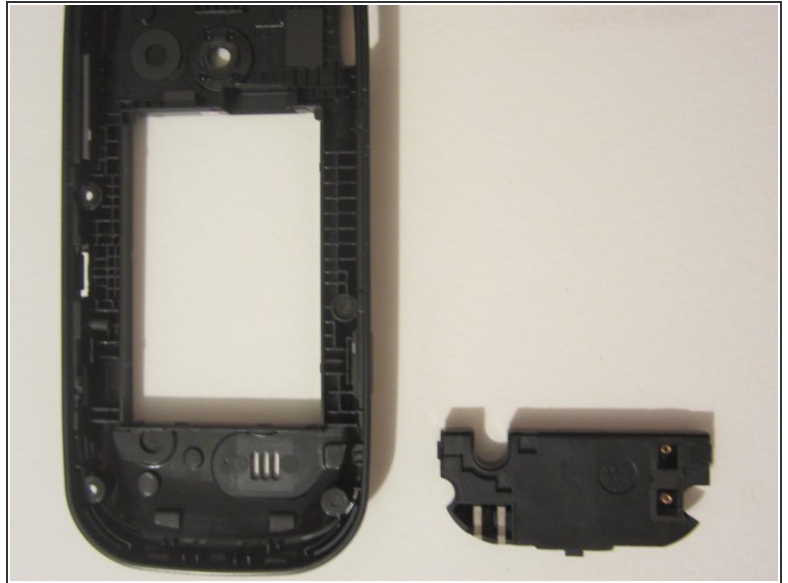
- Use a screwdriver and corresponding bit to remove the six 2mm screws that are located along the edge of the rear case. Set the screws aside.

### Step 4



- Use the plastic opener to pry the rear case loose.
- ⓘ This can be difficult. You will need to pry around the entire edge of the rear case, not just in one place.

## Step 5 — Speaker



- Use the TOOL to pry open the plastic piece located at the bottom of the rear case. This piece contains the speaker.

To reassemble your device, follow these instructions in reverse order.