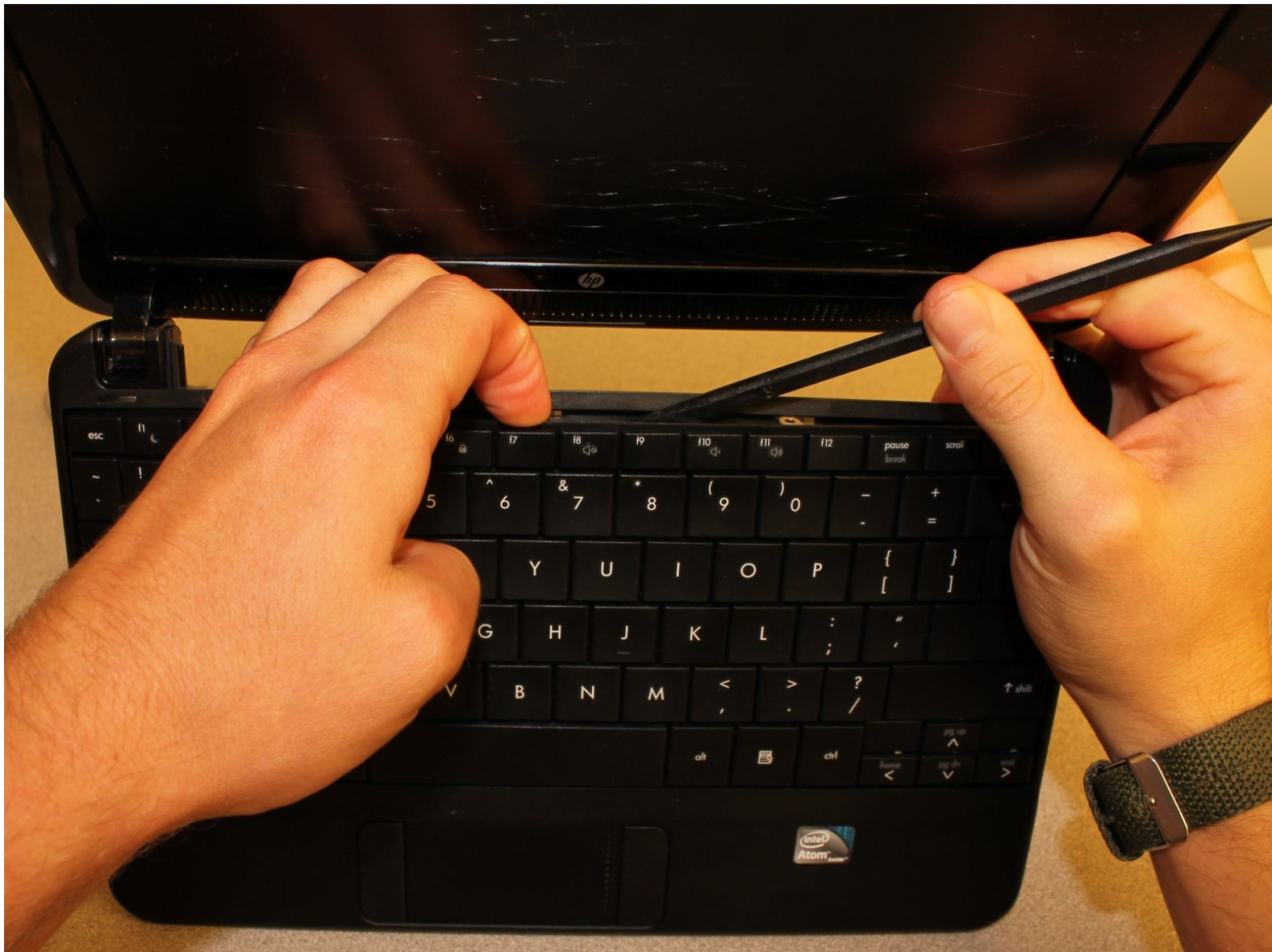




HP Mini 110-1046NR Keyboard Replacement

This guide details the steps required to remove and/or replace the keyboard on an HP Mini 110

Written By: Amos Hine



INTRODUCTION

The keyboard in the HP Mini 110 is held in by three screws behind the battery, and will easily pop out with a little clever work with the spudger. Removing the keyboard is a must if you need to access any of the internals (except for the memory).

TOOLS:

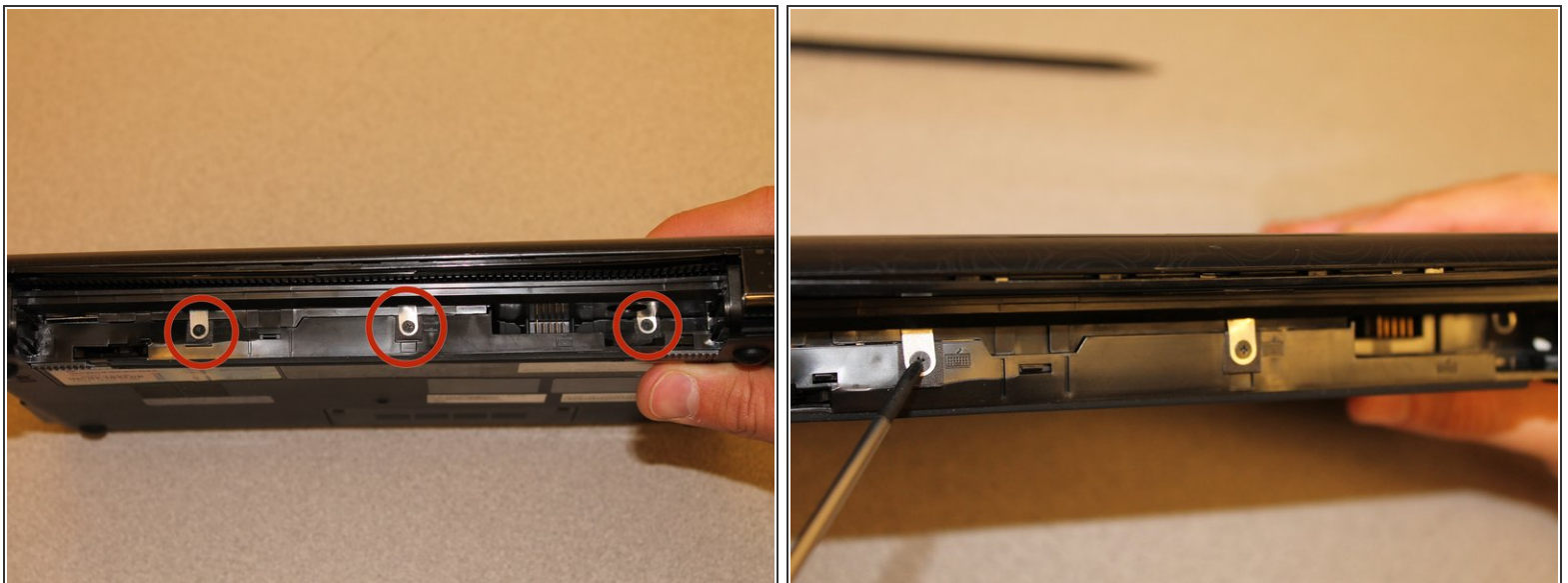
- [Spudger](#) (1)
 - [Phillips #00 Screwdriver](#) (1)
-

Step 1 — Battery



- Power-off the netbook fully before attempting to remove the battery.
- Flip your netbook upside down, and locate the sliding tabs near the battery.
- Slide both tabs inward so that the battery visibly moves away from the case of the computer.
- Release the tabs and pull the battery out.

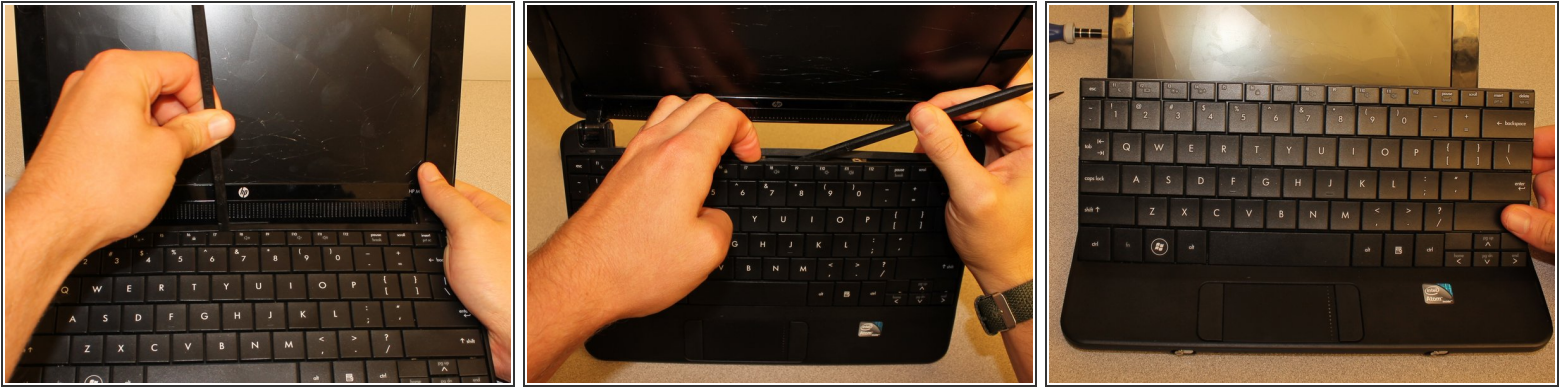
Step 2 — Keyboard



- With the screen closed, turn your netbook around so that the battery slot is facing you.
- Remove the three 2.9mm screws in the battery slot.
 - This step can be made easier by using a magnetic screwdriver.

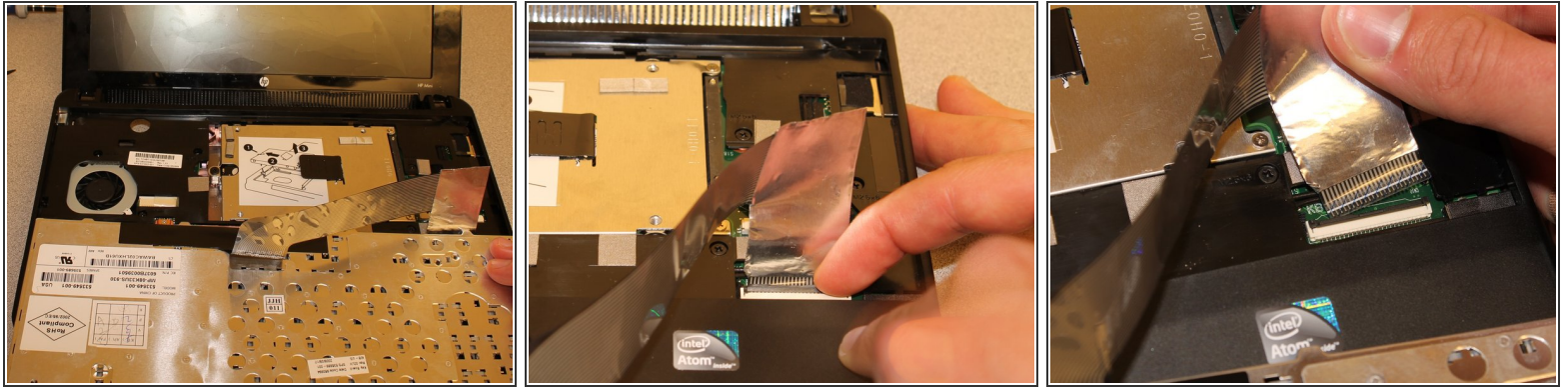
This document was generated on 2019-10-10 08:08:57 AM (MST).

Step 3



- Flip the netbook upright, and open the screen as far as it will go.
- Pry up the keyboard from the middle of the top edge.
 - Insert the flat end of the spudger between middle of the the top edge of the keyboard and the plastic frame behind it.
 - Pry the keyboard up until it pops out or until you can grab it with your fingers, and then pull gently until it pops out on both sides.
- ⚠ Do not pull the keyboard out immediately - there is a potentially fragile ribbon cable that attaches to the motherboard behind the keyboard.

Step 4



- Flip the keyboard over (toward you) by pivoting it about the lower edge, and lay it upside down on top of the touchpad area to reveal the ribbon cable.
- Lightly pull up on the black tab on top of the keyboard ribbon cable until it hinges toward you and releases the ribbon cable end.
- Pull the ribbon cable backward and out of the receptacle. This should not require any effort.

To reassemble your device, follow these instructions in reverse order.