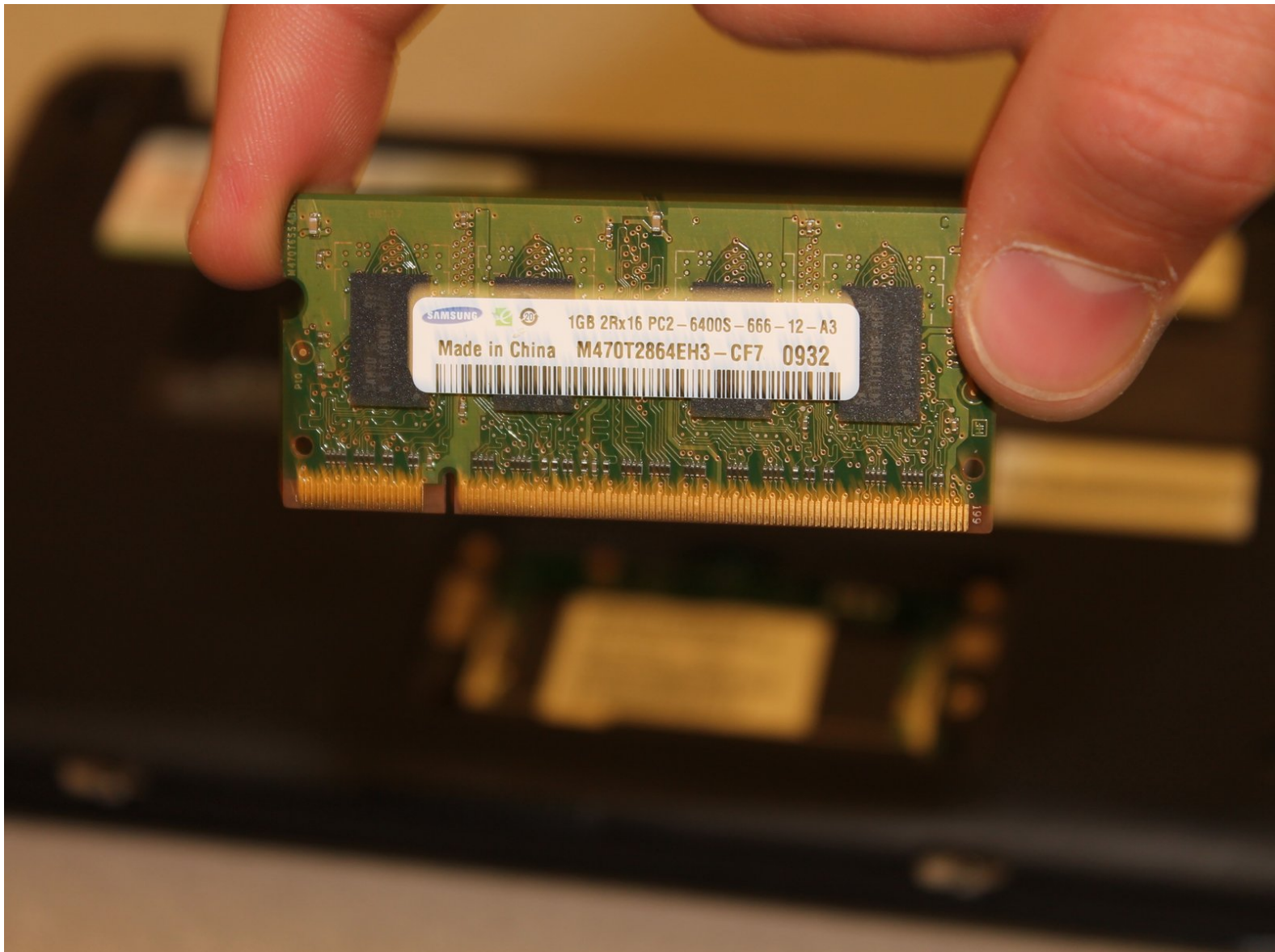




HP Mini 110-1046NR Memory Card Replacement

HP Mini 110 memory card replacement guide

Written By: Jared Cooper



INTRODUCTION

Replacing memory can greatly increase the operating speed of your HP mini.

TOOLS:

- [Phillips #1 Screwdriver](#) (1)
 - [Spudger](#) (1)
-

Step 1 — Battery



- Power-off the netbook fully before attempting to remove the battery.
- Flip your netbook upside down, and locate the sliding tabs near the battery.
- Slide both tabs inward so that the battery visibly moves away from the case of the computer.
- Release the tabs and pull the battery out.

Step 2 — Memory Card Cover



- Flip the netbook over so you are looking at the bottom, and locate the two screws that hold the memory card cover.
- Next, take a Phillips PH1 screwdriver and unscrew the two screws.
- ⓘ These screws will not release from the cover once they are unscrewed.
- If necessary, use the flat end of the spudger to assist in prying the cover away from the computer.

Step 3 — Memory Card



- Carefully push the clips to the side, away from the memory card.
 - Note: The memory module is spring-loaded and will pop out when the clips are detached.
- Slide the memory card straight out, holding it as shown to avoid getting skin oils on the electrical contacts.

To reassemble your device, follow these instructions in reverse order.

This document was last generated on 2019-07-12 05:36:10 AM.