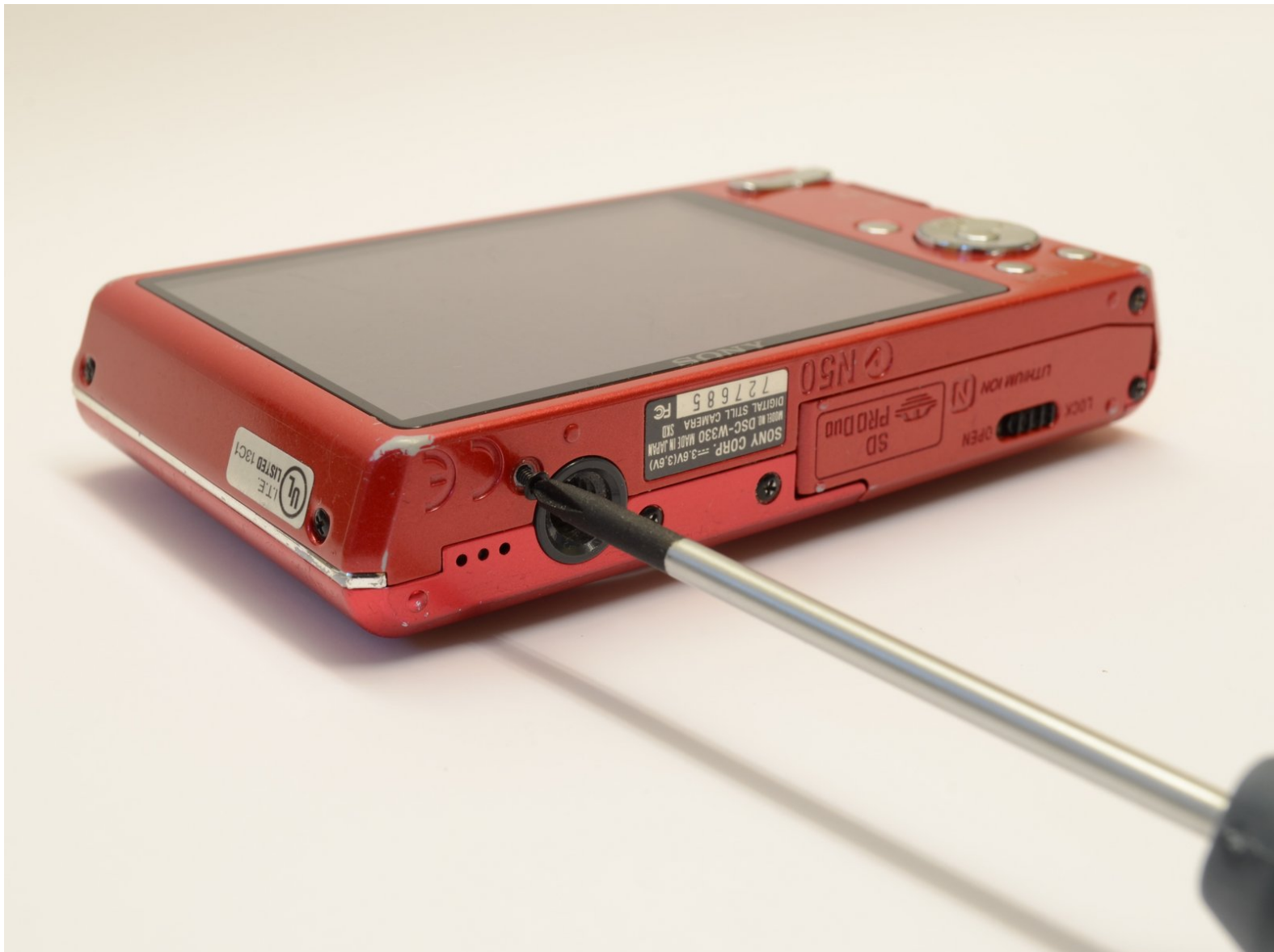




# Disassembling Sony Cyber-Shot DSC-W330 Outer Casing

Instructions to remove plastic outer casing so that inner parts of device can be accessed.

Written By: Hunter Stewart



---

## INTRODUCTION

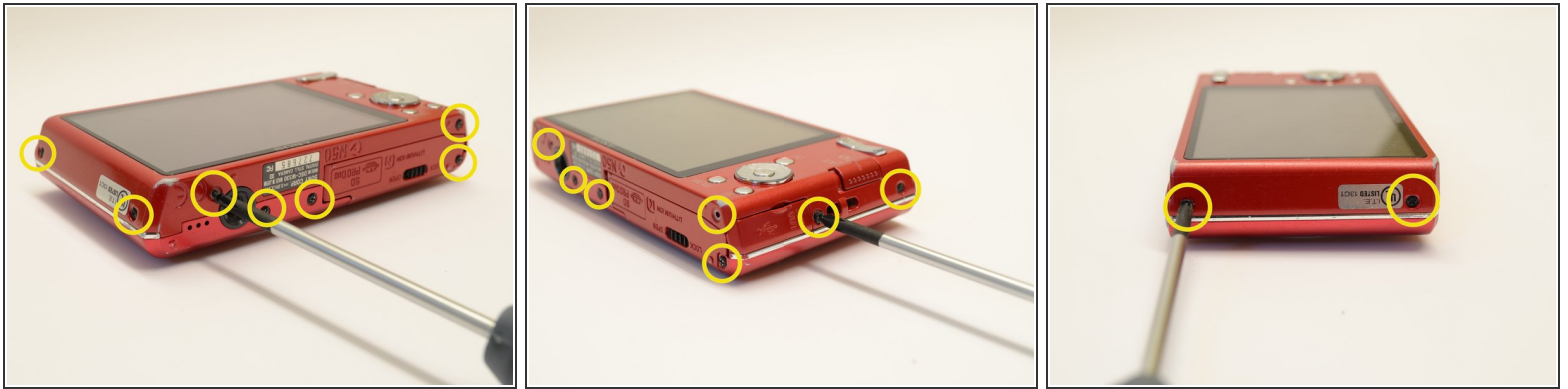
Before being able to access the inner parts of the device, it is necessary to remove the plastic outer case. This can easily be done in a few simple steps.

---

### TOOLS:

- [Phillips #00 Screwdriver](#) (1)
  - [iFixit Opening Tools](#) (1)
-

## Step 1 — Outer Casing



- Begin by placing the camera flat against a surface and remove the nine (9) black screws. Each screw is of the same length and can be used interchangeably

**i** Note: There are two (2) screws on each side, and five (5) on the bottom edge.

## Step 2



- Use a plastic opening tool to carefully pry off the front casing.

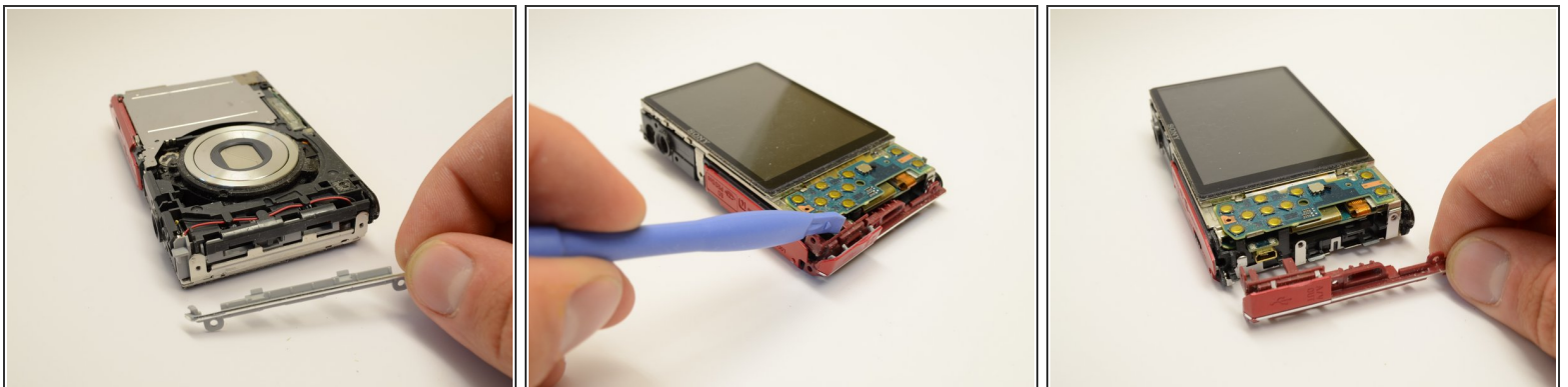
**!** Be careful to not to force the casing off. Simply move around the entire case separating where needed.

### Step 3



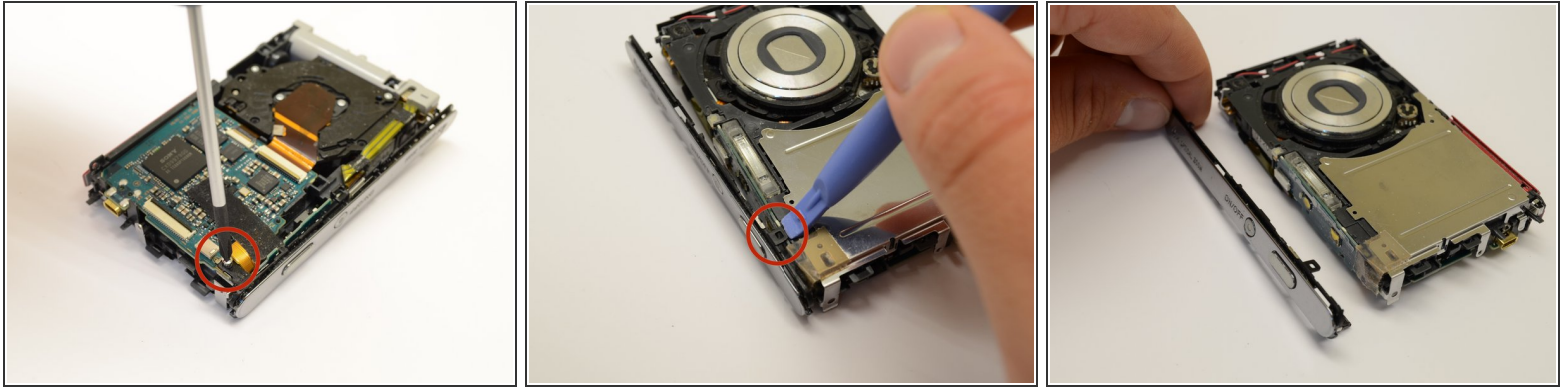
- Flip the camera over 180 degrees and similarly pry off the rear casing.

### Step 4



- Once the outer casings have been removed, the silver side trim should come loose from the camera.
  - Place the camera with the lens facing down. Use the plastic opening tool to pry off the side panel with the USB plug.
- (i)** *Note: If you wish to remove the top cover, see the [LCD Display Replacement](#) to remove the LCD screen before continuing to Step 5*

## Step 5



- Place the camera with the lens facing down. Use the phillips head screwdriver to remove the silver screw in the corner near the photo capture button.
- Flip the camera over. Use the plastic opening tool to detach the black clip near the capture button.
- Grasp the top cover and gently remove it from the camera body.

To reassemble your device, follow these instructions in reverse order.