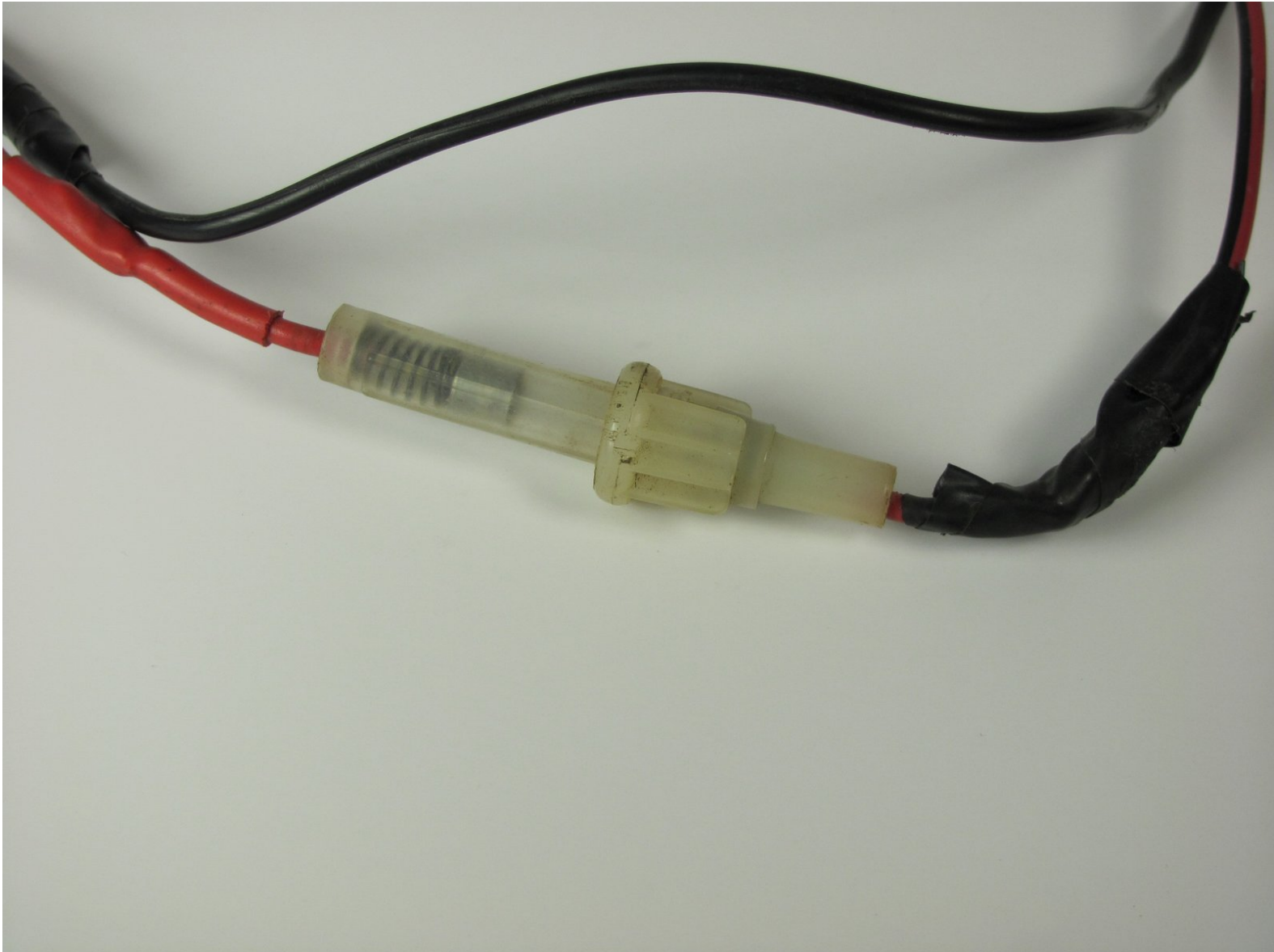




# Cobra 29 LTD Classic Fuse Replacement

This guide will show how to replace the fuse for the radio.

Written By: danperoni



## INTRODUCTION

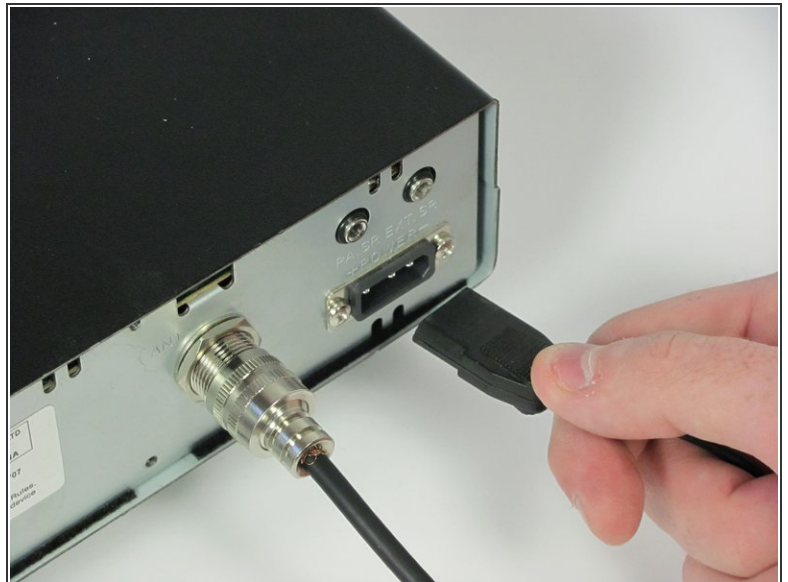
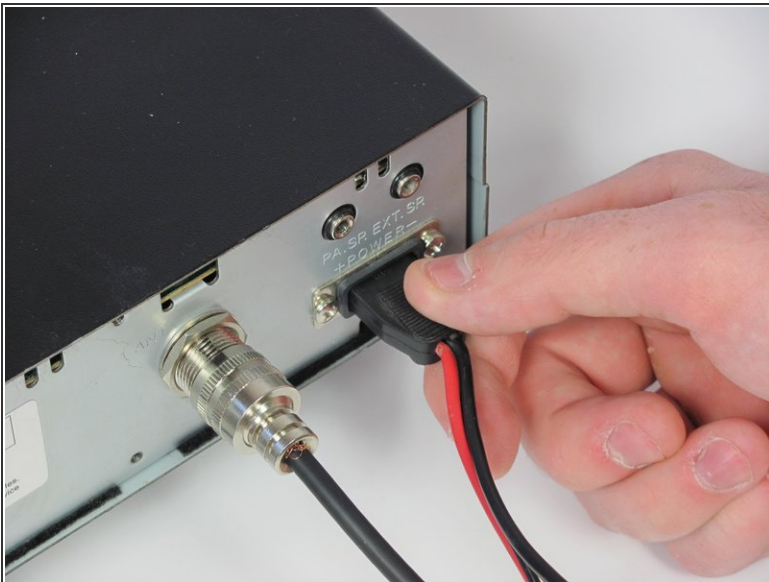
The fuse is part of the power cable. It burns out under high electrical current to prevent damage to the radio. The power cable should be disconnected from the power source before starting this guide.

## Step 1 — Power Cable



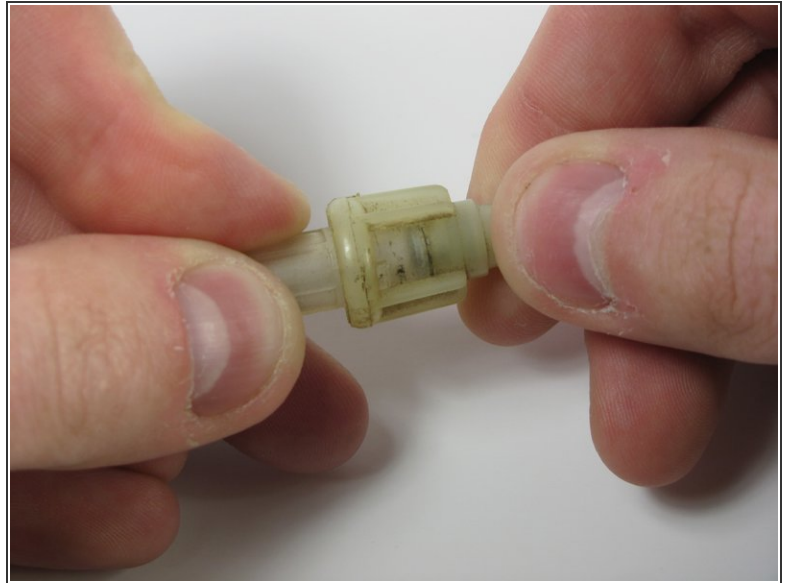
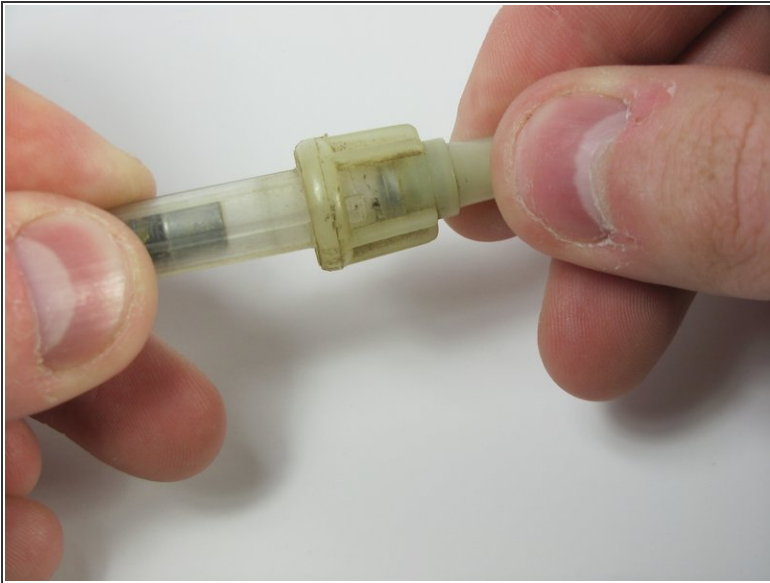
- Turn the power switch, the leftmost knob, counterclockwise to off.

## Step 2



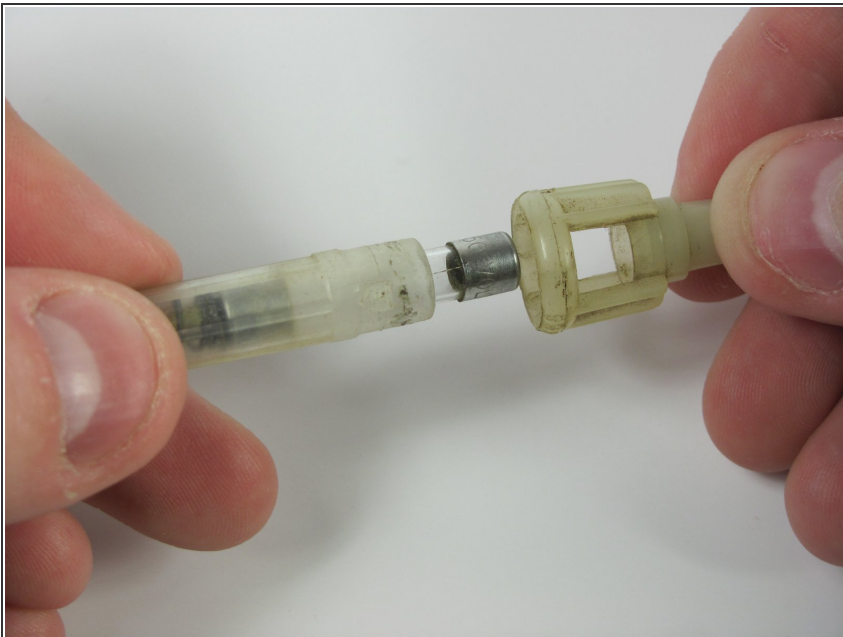
- Turn the device around and firmly pull the power cable plug to remove it from the radio.

### Step 3 — Fuse



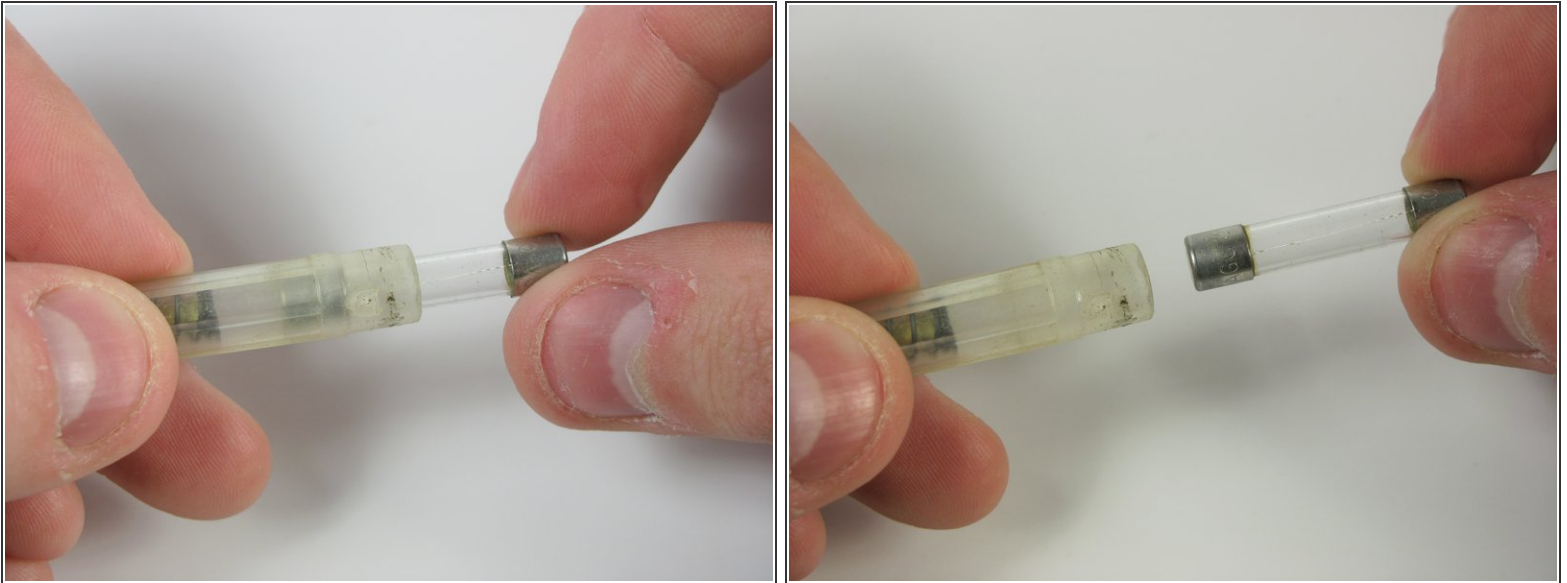
- Simultaneously push the fuse container together and rotate counterclockwise.

### Step 4



- Pull the two halves apart.



**Step 5**

- Remove the fuse from the case.

To reassemble your device, follow these instructions in reverse order.