



LG Cosmos 2 Rear Case Replacement

It is fairly easy to replace broken or shattered rear case.

Written By: Nick White



INTRODUCTION

Rear case replacement will only require the removal of the battery and six screws, but prying the case loose may take a few minutes.

TOOLS:

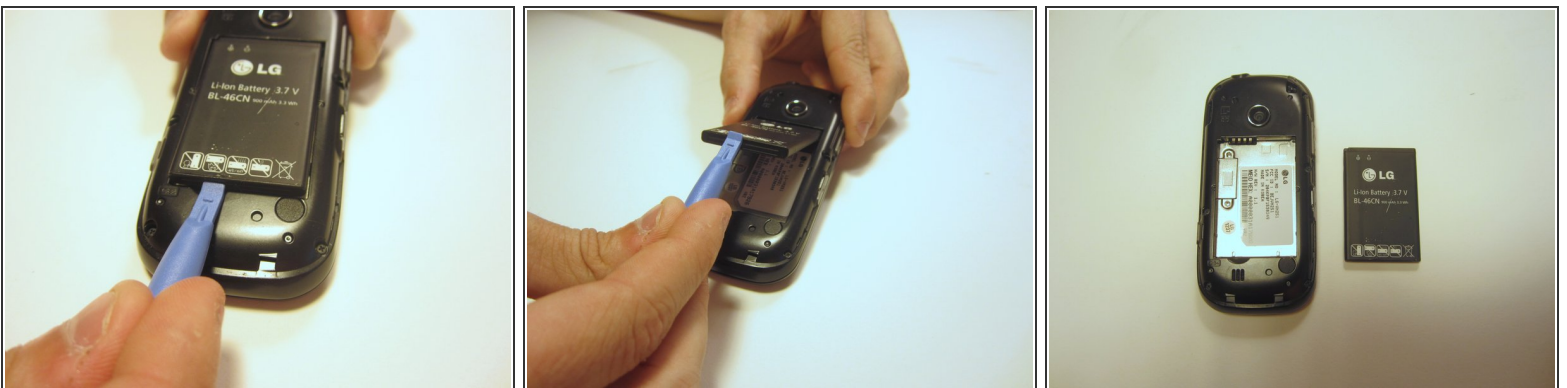
- [iFixit Opening Tools](#) (1)
 - [64 Bit Driver Kit](#) (1)
-

Step 1 — Battery



- Insert the plastic opener into the slot at the top of the device.
- Apply gentle pressure with the plastic tool to pop the back case off.

Step 2



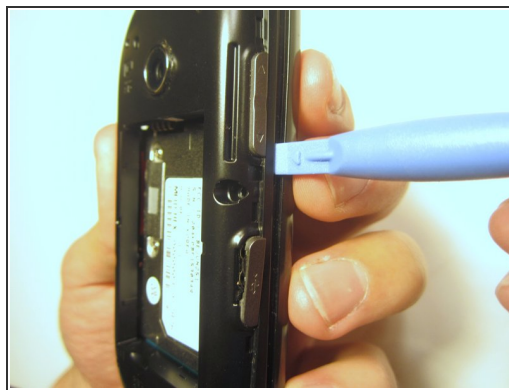
- Use the plastic opener to lift, and remove, the device battery.

Step 3 — Rear Case



- Use a screwdriver and corresponding bit to remove the six 2mm screws that are located along the edge of the rear case. Set the screws aside.

Step 4



- Use the plastic opener to pry the rear case loose.
- ⓘ This can be difficult. You will need to pry around the entire edge of the rear case, not just in one place.

To reassemble your device, follow these instructions in reverse order.