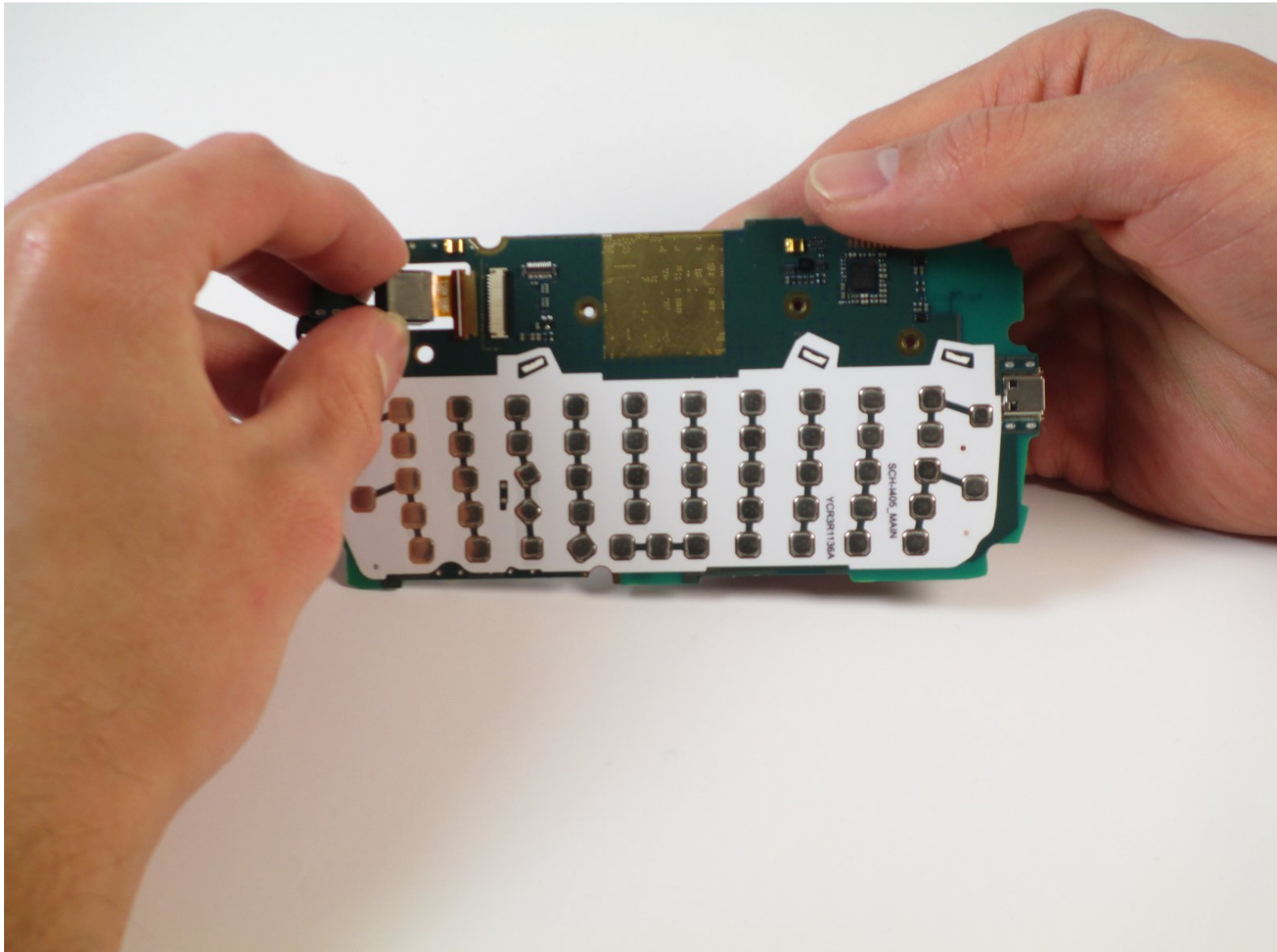




Samsung Stratosphere Rear Camera Replacement

Replace the rear camera on your Samsung Stratosphere and get back to taking pictures.

Written By: Ryan



INTRODUCTION

The rear camera is on the back of the phone and faces away from the screen. This is the highest quality camera on the phone and easiest to damage.

TOOLS:

- [Phillips #000 Screwdriver](#) (1)
 - [iFixit Opening Tools](#) (1)
 - [Tweezers](#) (1)
-

Step 1 — Battery



- Using your fingers, pry along the groove at the top of the phone.
- Pull back on the rear casing until it comes free from the device.
- The casing will make a cracking sound as it is removed.

Step 2



- With your fingers, pry from the bottom of the battery to loosen it.
- Lift away to remove the battery from the phone.

Step 3 — Motherboard



- Locate the red and white sim card located above the battery housing.
- Remove the sim card by sliding it downwards from its slot with your fingers.

Step 4



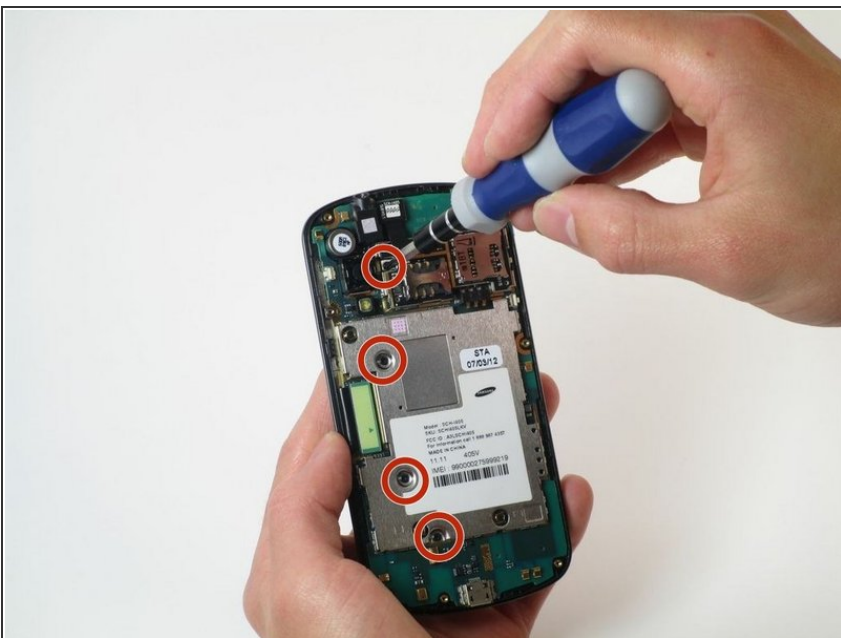
- Remove the seven silver 3mm screws securing the rear panel using the Phillips #000 screwdriver.
- ⓘ Once loosened, some screws may get stuck in the casing. Use tweezers to remove them.

Step 5



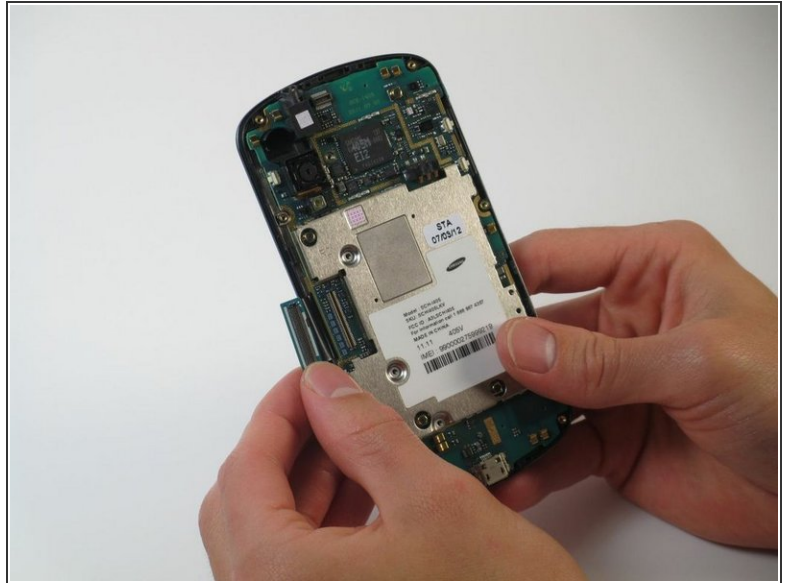
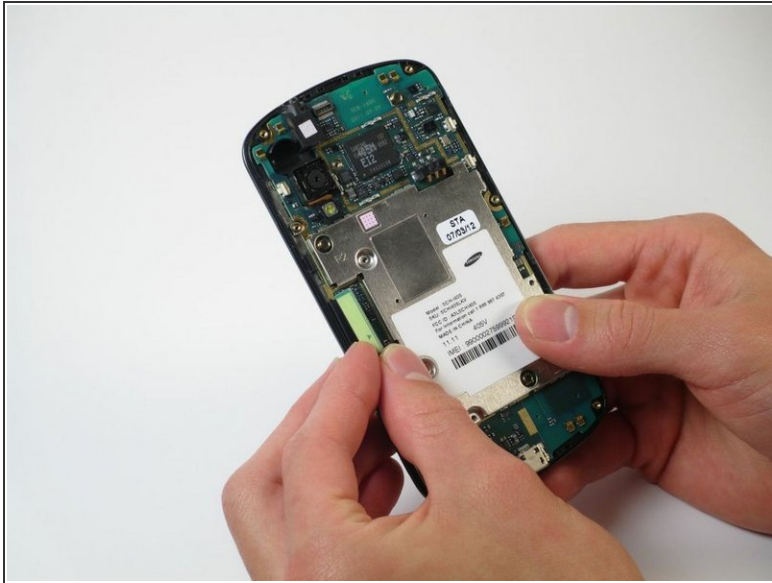
- Pry around the rear panel with a plastic opening tool to loosen it.
 - ⚠ Prying too deeply may damage delicate components inside the phone.
- Remove the rear panel from the phone with your fingers.

Step 6



- Remove the four black 3mm screws securing the motherboard with the Phillips #000 screwdriver.

Step 7



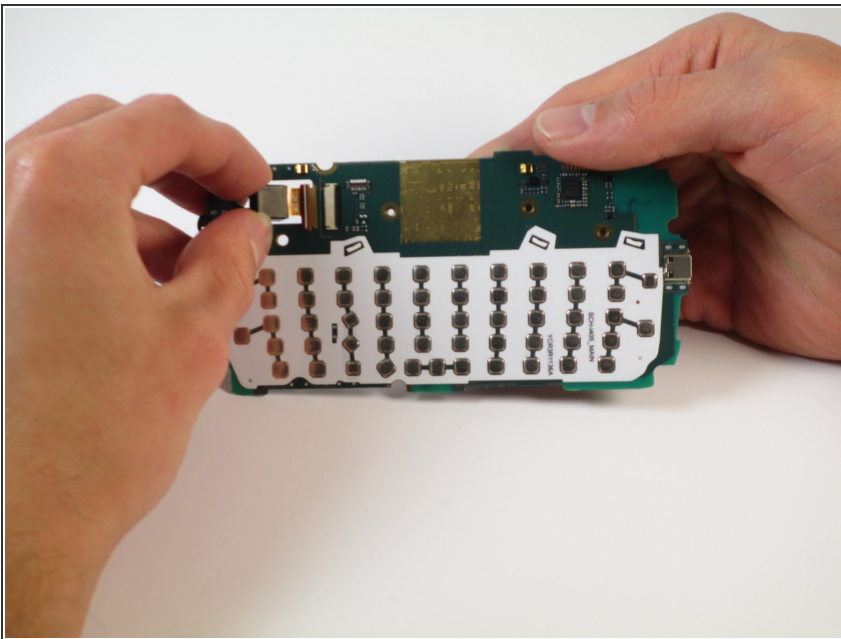
- Locate the flex cable attachment at the tab with a green arrow printed on top.
- Pry from the side the arrow is pointing with your fingers.
 - The cable will audibly snap as it is removed from its attachment.
 - Let the cable hang loosely to the side of the phone.

Step 8



- Pull the motherboard up from the side opposite the loose flex cable.
- ⓘ If necessary, use a plastic opening tool to separate the motherboard from the key pad underneath.
- Lift to remove the motherboard from the device.

Step 9 — Rear Camera



- Gently pull the camera to the left while keeping it as close to the motherboard as possible.
- The metal foil connector attached to the camera should slide out of the motherboard.

To reassemble your device, follow these instructions in reverse order.