



# Samsung Stratosphere Motherboard Replacement

This prerequisite guide will show you how to get to and properly remove the motherboard from the Samsung Stratosphere phone.

Written By: Angelica Macrohon



---

## INTRODUCTION

This guide was intended to be a prerequisite guide.

---

### TOOLS:

- [Phillips #000 Screwdriver](#) (1)
  - [Tweezers](#) (1)
  - [iFixit Opening Tools](#) (1)
-

## Step 1 — Battery



- Using your fingers, pry along the groove at the top of the phone.
- Pull back on the rear casing until it comes free from the device.
- The casing will make a cracking sound as it is removed.

## Step 2



- With your fingers, pry from the bottom of the battery to loosen it.
- Lift away to remove the battery from the phone.

### Step 3 — Motherboard



- Locate the red and white sim card located above the battery housing.
- Remove the sim card by sliding it downwards from its slot with your fingers.

### Step 4



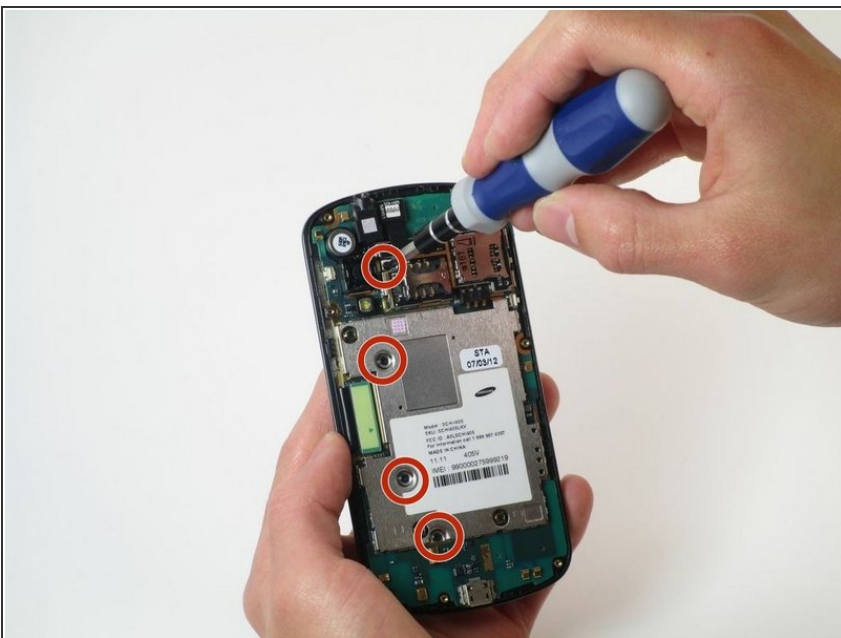
- Remove the seven silver 3mm screws securing the rear panel using the Phillips #000 screwdriver.
- ⓘ Once loosened, some screws may get stuck in the casing. Use tweezers to remove them.

## Step 5



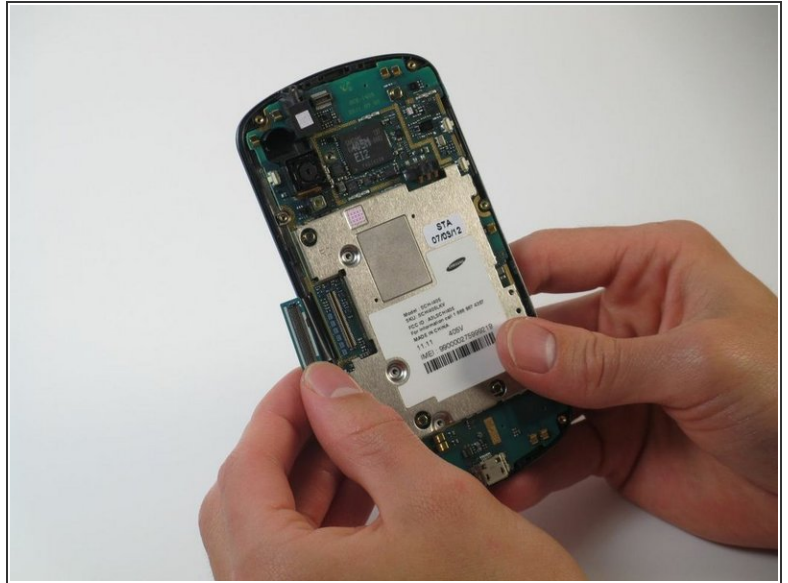
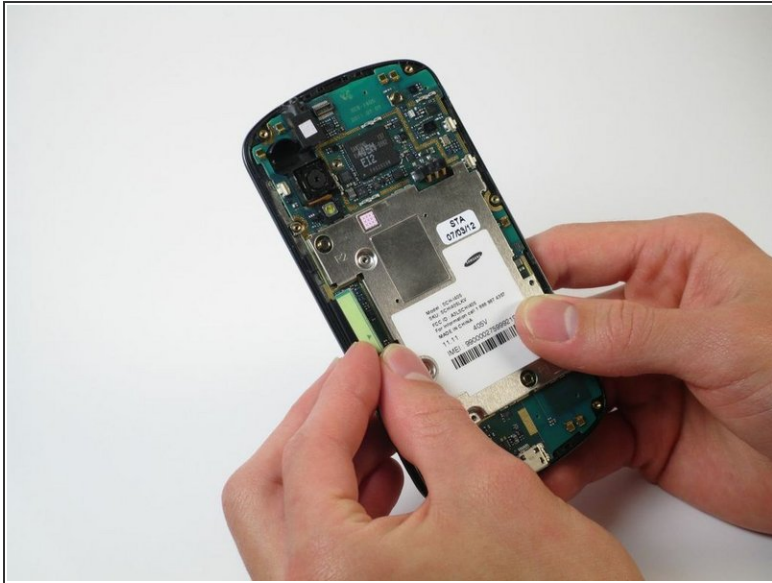
- Pry around the rear panel with a plastic opening tool to loosen it.
  - ⚠ Prying too deeply may damage delicate components inside the phone.
- Remove the rear panel from the phone with your fingers.

## Step 6



- Remove the four black 3mm screws securing the motherboard with the Phillips #000 screwdriver.

## Step 7



- Locate the flex cable attachment at the tab with a green arrow printed on top.
- Pry from the side the arrow is pointing with your fingers.
  - The cable will audibly snap as it is removed from its attachment.
  - Let the cable hang loosely to the side of the phone.

## Step 8



- Pull the motherboard up from the side opposite the loose flex cable.
  - ⓘ If necessary, use a plastic opening tool to separate the motherboard from the key pad underneath.
- Lift to remove the motherboard from the device.

To reassemble your device, follow these instructions in reverse order.

This document was last generated on 2019-07-18 02:58:40 PM.