



# Polaroid Sun 600 LMS Film Pack Replacement

Written By: Matthew Lessig



# INTRODUCTION

How to install a new film pack.

## Step 1 — Film Pack



- Locate film door and slide release latch.
- ⓘ The slide release is near the lower left corner towards the front of the camera.

## Step 2



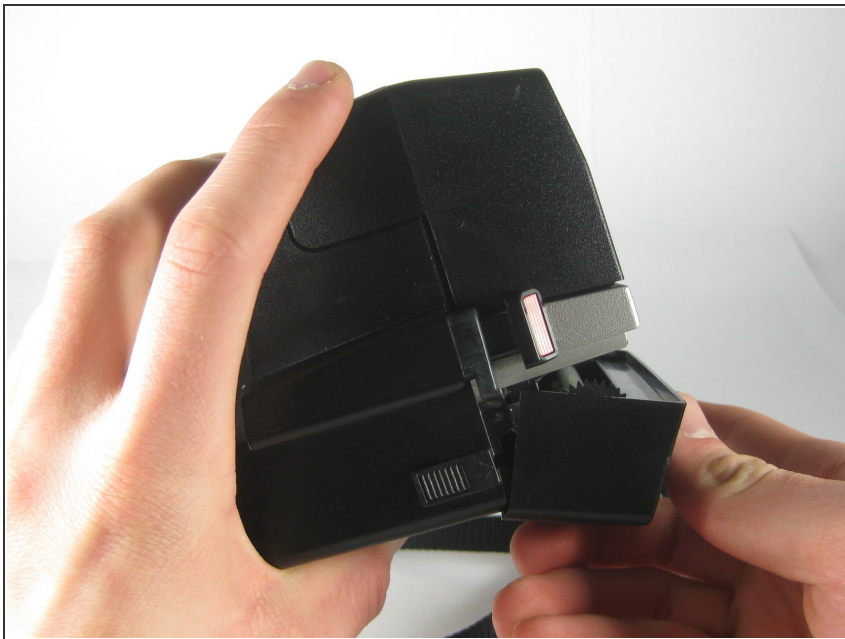
- Slide side latch towards the front of camera.
- The film door will pop open.

### Step 3



- Insert film pack.
- ⓘ Make sure the battery contacts on the film pack are facing down and in contact with the camera's contacts.

### Step 4



- Close film door by gently pushing it back into place.