



Dell QuietKey Keyboard Teardown

Teardown of an older generation Dell QuietKey Keyboard.

Written By: Aaron Lee



INTRODUCTION

Use this guide to replace a cracked or malfunctioning display on your older generation Dell QuietKey Keyboard (identified with model number AT101).

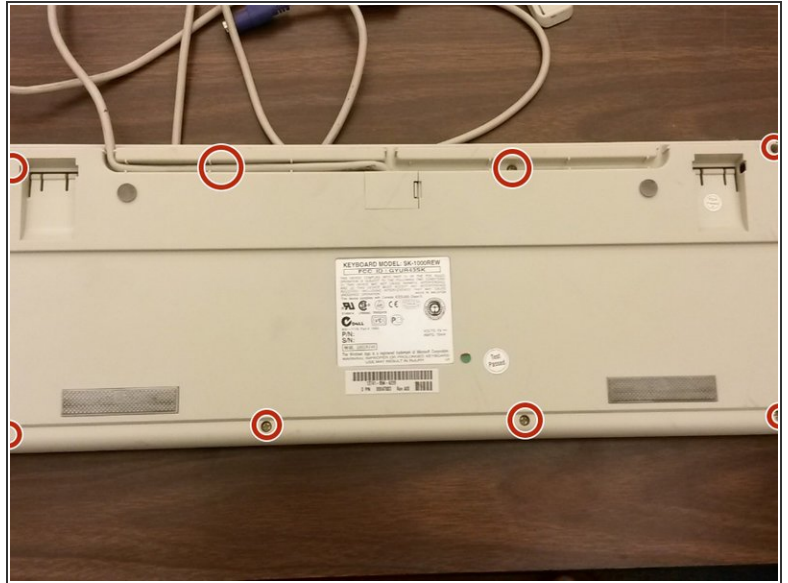
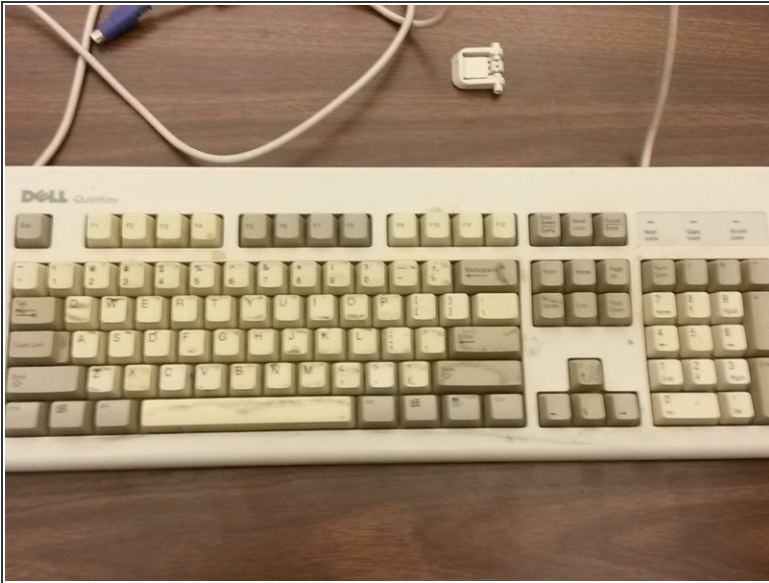
If your Dell QuietKey Keyboard (model AT101) isn't typing like it used to—sticky keys, crunch noises when you type—or is just really dirty, use this guide to tear down the keyboard by removing all of the keys.

Before beginning, make sure to disconnect from any external power source and computer.

TOOLS:

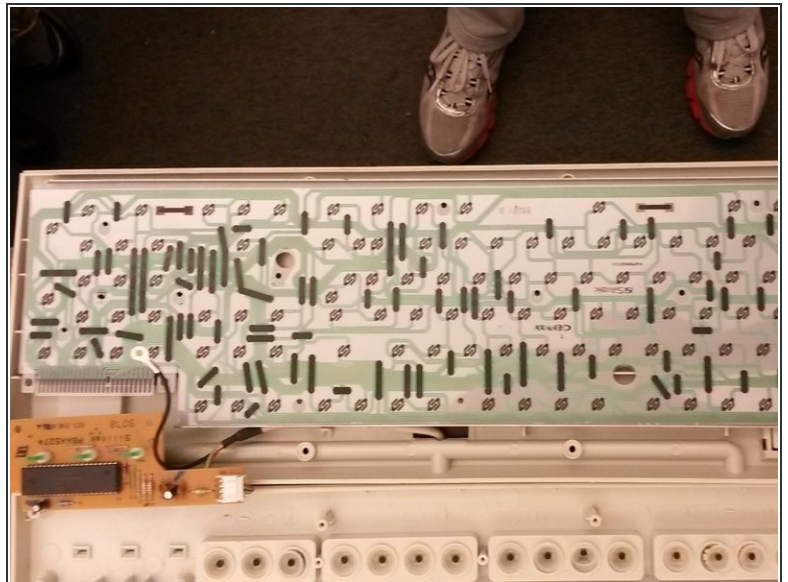
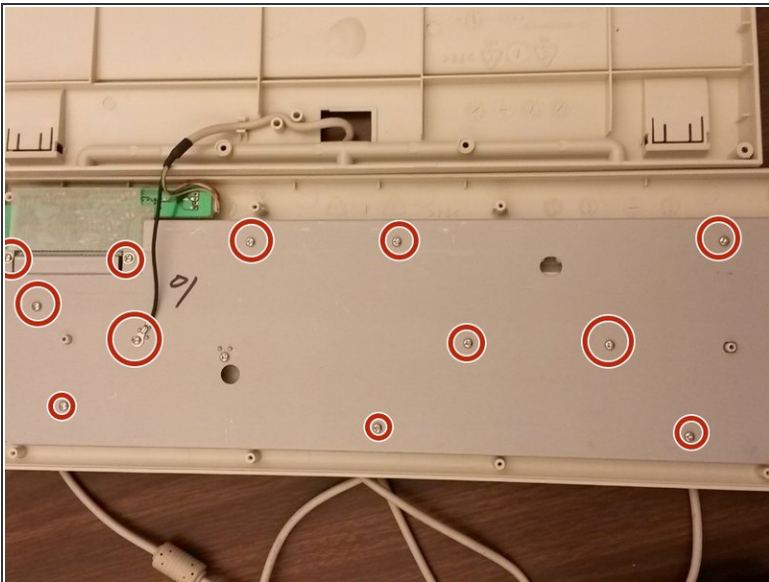
- [Phillips #2 Screwdriver](#) (1)
-

Step 1 — Dell QuietKey Keyboard Teardown



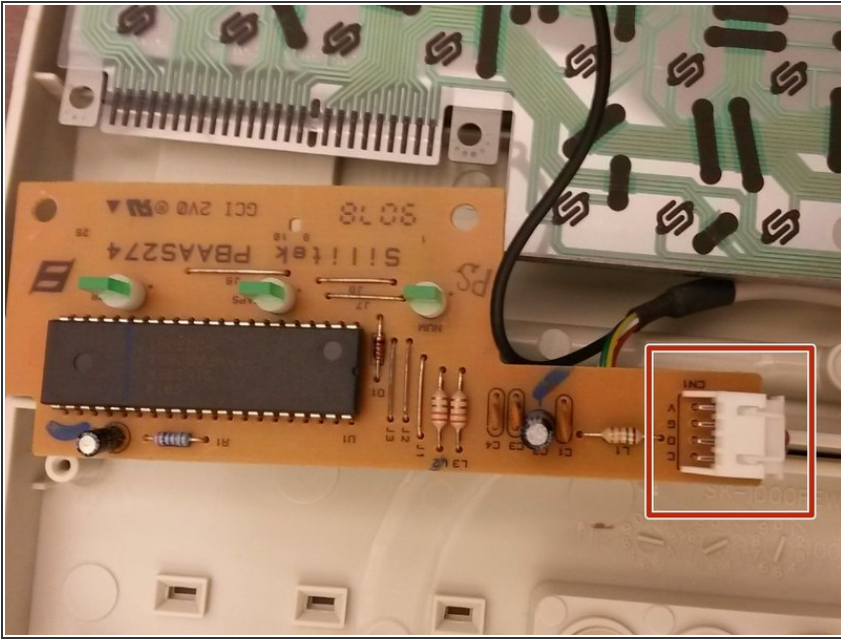
- Turn the keyboard over onto its back and remove the eight Phillips #2 screws.

Step 2



- Remove the 12 Phillips #2 screws.
- Lift and remove the metal plate to reveal the internal components of the keyboard.

Step 3



- Remove the cable attached to the controller.

Step 4



- The keyboard is now fully broken down.

To reassemble your device, follow these instructions in reverse order.