



Eureka 1660SP Extendable Pole Realignment

This guide explains how to realign the extendable pole back on to it's track within the motor housing.

Written By: Evan Fodi




 **TOOLS:**

- [Phillips #2 Screwdriver](#) (1)
-

Step 1 — Motor Housing



 Before you start, make sure your vacuum is unplugged the power outlet.

- Press and hold down the black button below the handle while pulling the pole out.

Step 2



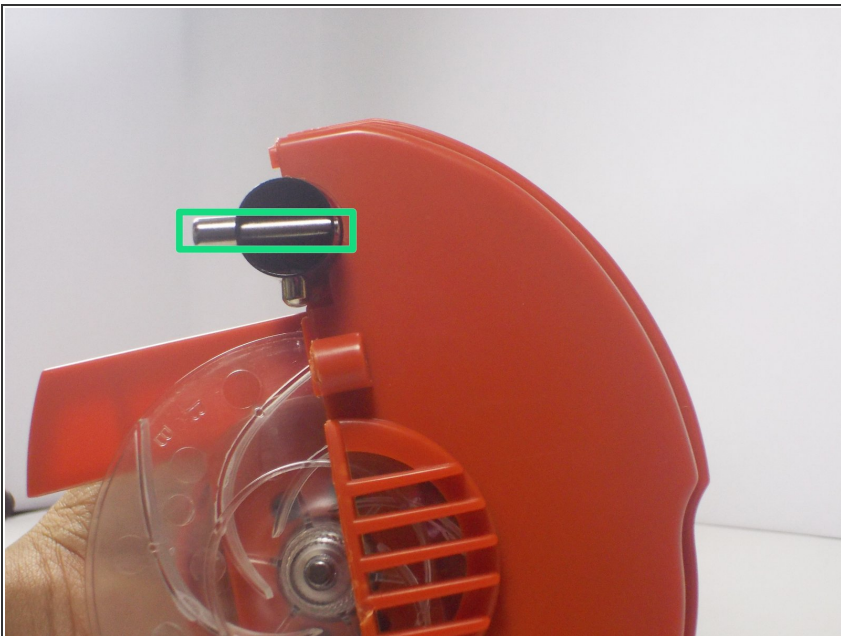
- Press the black separator switch to separate the top and bottom halves of the vacuum.

Step 3



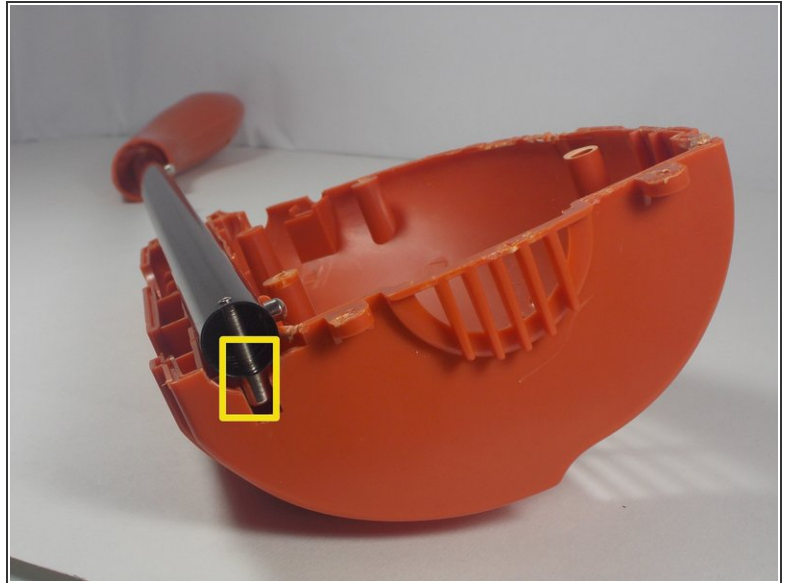
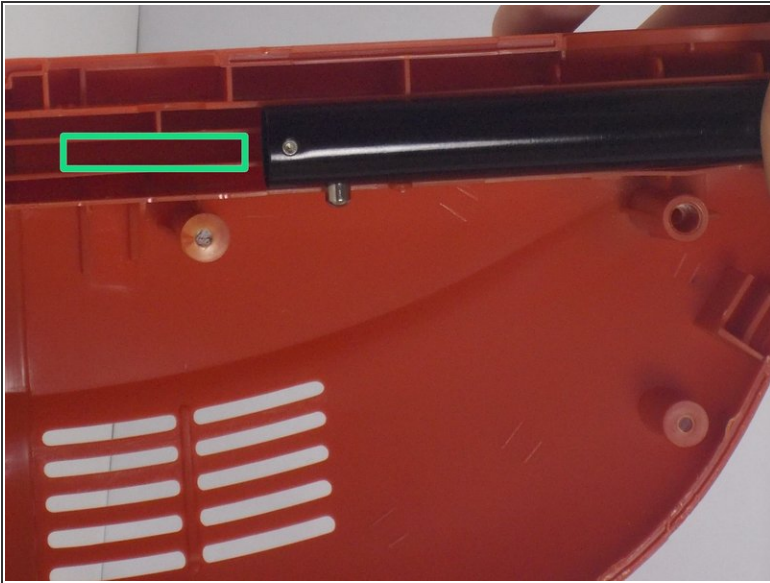
- Use a #2 Phillips head screwdriver to remove six 13.9mm screws from the side of the motor housing (top half) as shown.
 - Remove two 14.1mm screws from the front face of the housing. You are now all set to open the housing.
- ⚠ Keep a watchful eye on the two screws from the front face. These two have additional collars to their necks and will not fit in any of the other holes, yet no other screw will fit in their spots without the collar.

Step 4 — Realignment of the extendable pole



- Once the housing is open, locate the solid chrome plated piece at the front end of the extendable pole.

Step 5



- On the side of the motor housing which does not hold the engine, find the center track which runs along the inside of the housing.
- Re-insert the chrome plated piece into the center track.

To reassemble your device, follow these instructions in reverse order.

This document was last generated on 2019-07-18 08:57:11 AM.