



Samsung SCH-U340 Teardown

Written By: Anish Sambamurthy



INTRODUCTION

Removing the outer casing of the Samsung SCH-U340.

TOOLS:

- [Phillips #00 Screwdriver](#) (1)
 - [iFixit Opening Tools](#) (1)
 - [Spudger](#) (1)
-

Step 1 — Samsung SCH-U340 Teardown



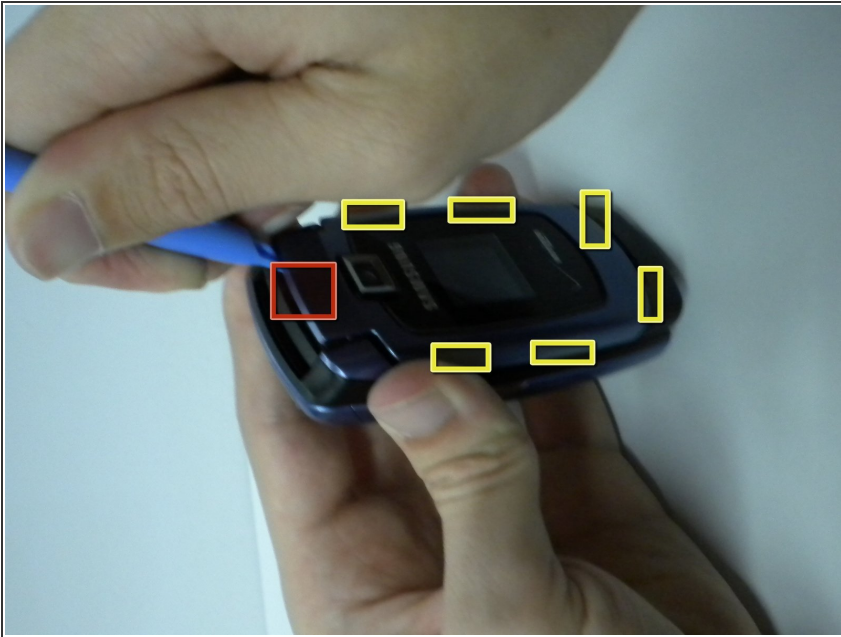
- The U340's outer casing is held in place through a combination of screws and tabs. The screws are hidden under plastic plugs, which will need to be removed.

Step 2



- After these plugs are pulled out, remove the two screws located under them. These screws are very small, so be sure to keep them safe.

Step 3



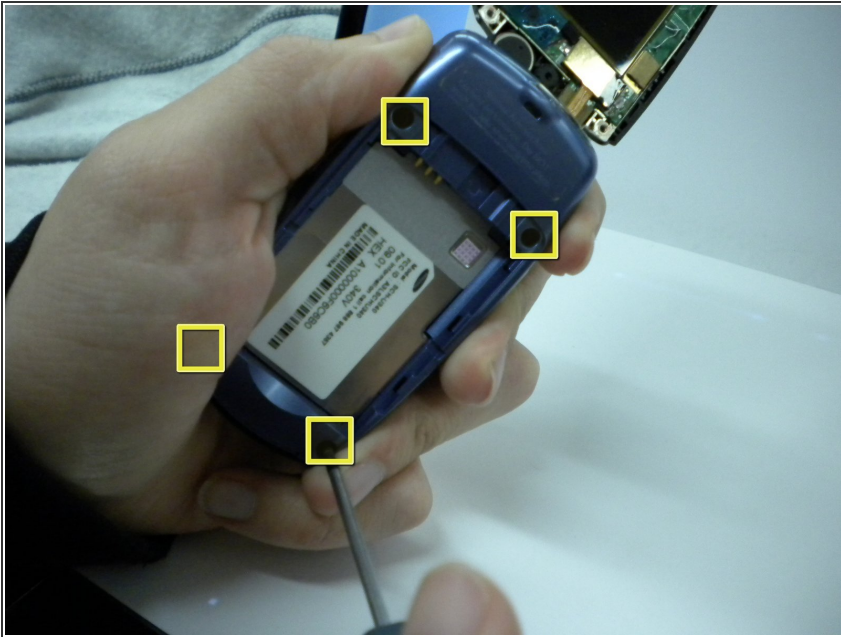
- The only thing keeping the top part of the casing on now are seven tabs--one large tab (marked in red) and six smaller tabs (marked in yellow). To remove the casing, first start by removing the big tab.

Step 4



- Now remove the smaller tabs, doing the tabs marked in red last. After the tabs have been removed, carefully peel the outer cover off completely.

Step 5



- Removing the bottom cover is a much simpler task. After removing the four screws marked in the picture, simply peel the back cover off.