



Les Paul Wireless Guitar Body Teardown

This guide will demonstrate how to open the body of the guitar.

Written By: Chris



INTRODUCTION


The body of the guitar holds most of the main components and motherboards.

TOOLS:

- [TR10 Torx Security Screwdriver](#) (1)
-

Step 1 — Les Paul Wireless Guitar Body Teardown



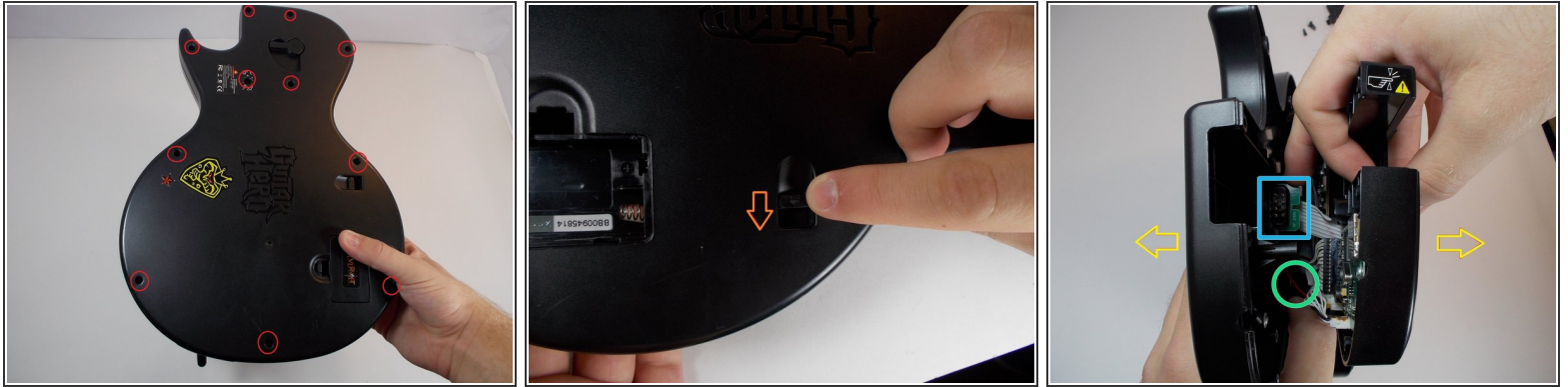
 Remove batteries

Step 2



- Remove void warranty sticker
- The sticker is covering a torx screw

Step 3



- Unscrew the 11 screws securing the back of the body using a T10 Torx screwdriver. Each screw is 1 cm long.
- Push level, this will detach the back of the guitar from the front.
- Carefully remove the back of the body
 - The battery pack cord is attached to both sides of the guitar, be careful not to tear it apart.
 - The neck connector may be stuck to the back so be sure to detach it before fully pulling

To reassemble your device, follow these instructions in reverse order.

This document was last generated on 2019-08-05 06:18:26 PM.