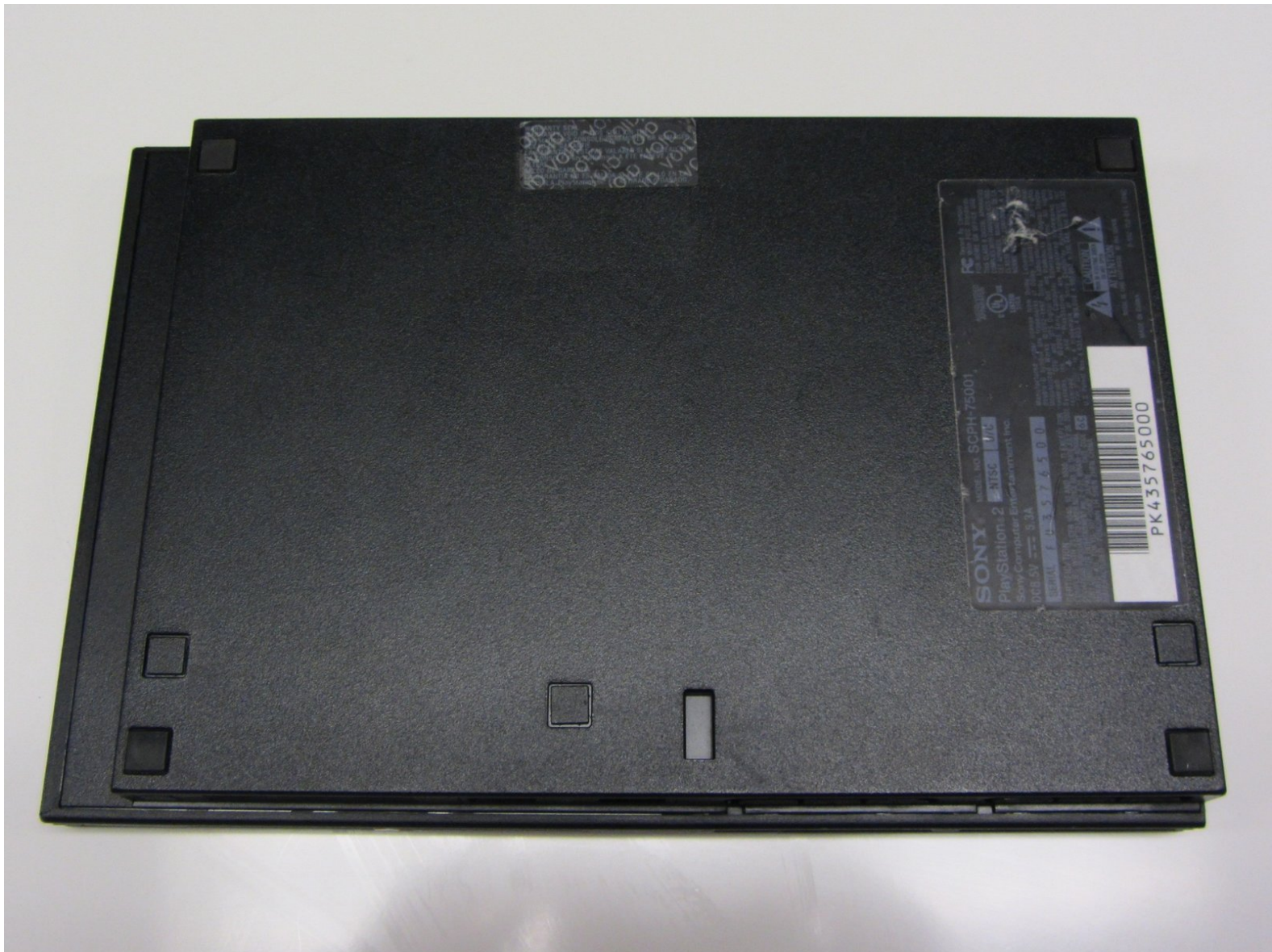




Disassembling PlayStation 2 Slimline Outer Shell

This guide will show you how to disassemble the outer shell of the PlayStation 2 Slimline. When opened, you will be able to access all interior components.

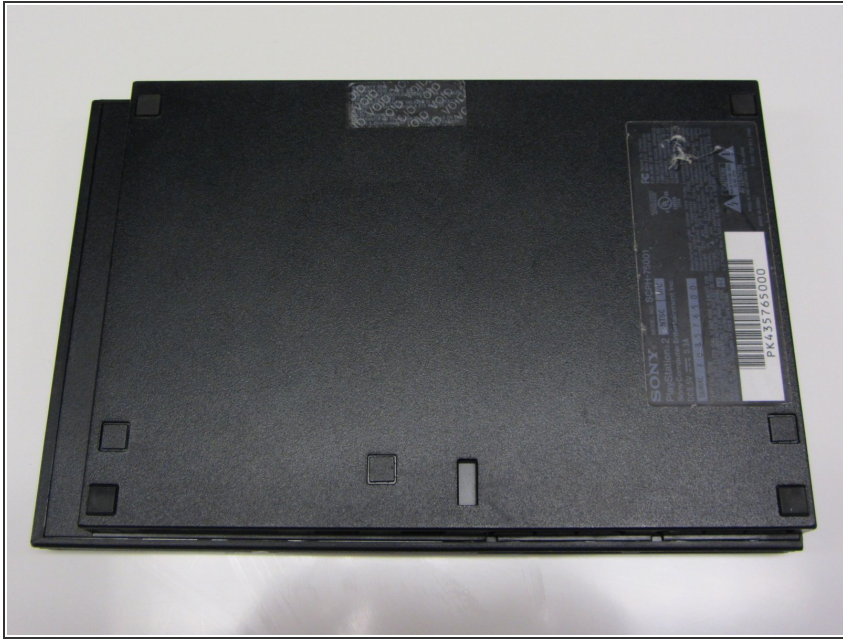
Written By: Thomas Sullivan



 **TOOLS:**

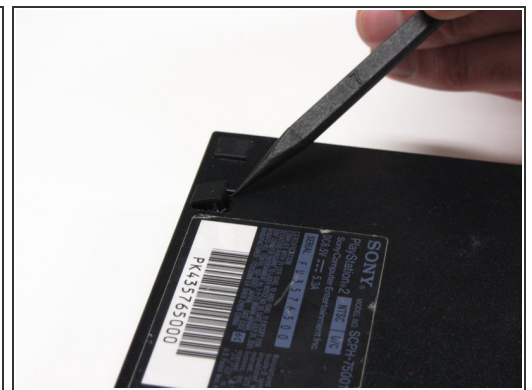
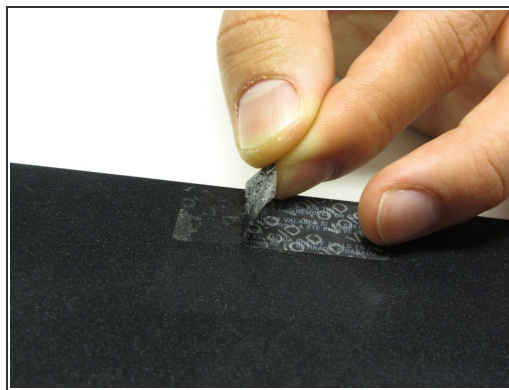
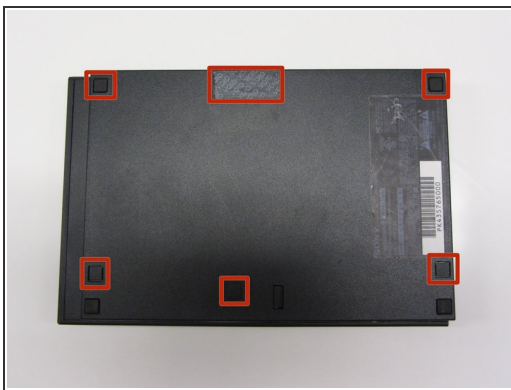
- Phillips #1 Screwdriver (1)
 - Spudger (1)
-

Step 1 — Outer Shell



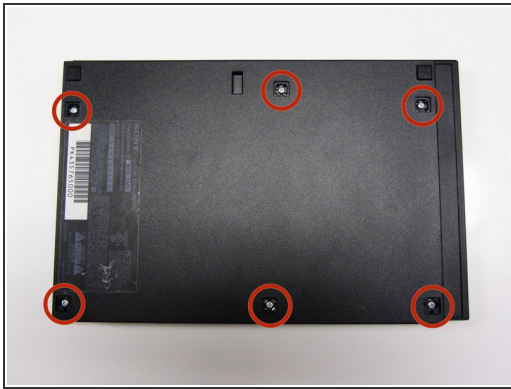
- Disconnect all cables from the console and flip the unit over to reveal its base.

Step 2



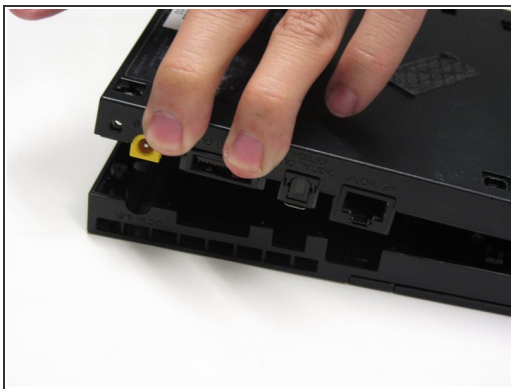
- Locate the 6 feet on the base of the unit. Pry them off using a spudger to reveal the screws.
- ⓘ Note: One of the feet is located under the sticker shown in the photo. Removing this sticker will void any warranty with Sony.

Step 3



- Remove all six 4.0 mm screws from the base of the unit using a #1 Phillips screwdriver.

Step 4



- Starting at the corner at which the power and Ethernet ports are located, pry open the outer shell using a spudger and continue around the entire unit.

i Note: You may use your hands for additional force to separate the two pieces of the outer shell.

To reassemble your device, follow these instructions in reverse order.