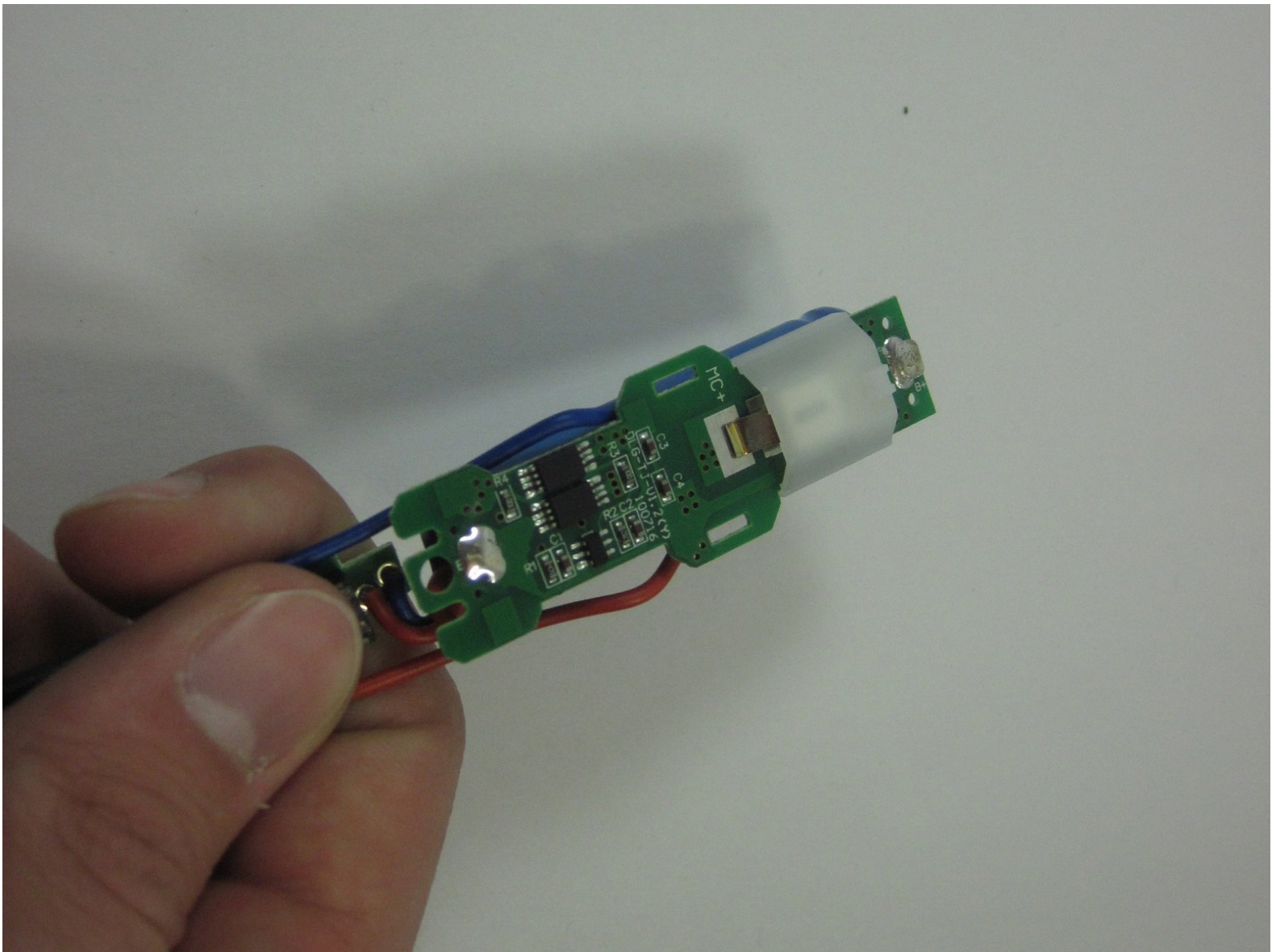




# Wahl Lithium Ion Trimmer Chip set Replacement

The chipset is a circuit board and if water penetrates the cover and leaks in the it will fail. In order to replace the chipset you replace the entire circuit board and re-wiring to the other components.

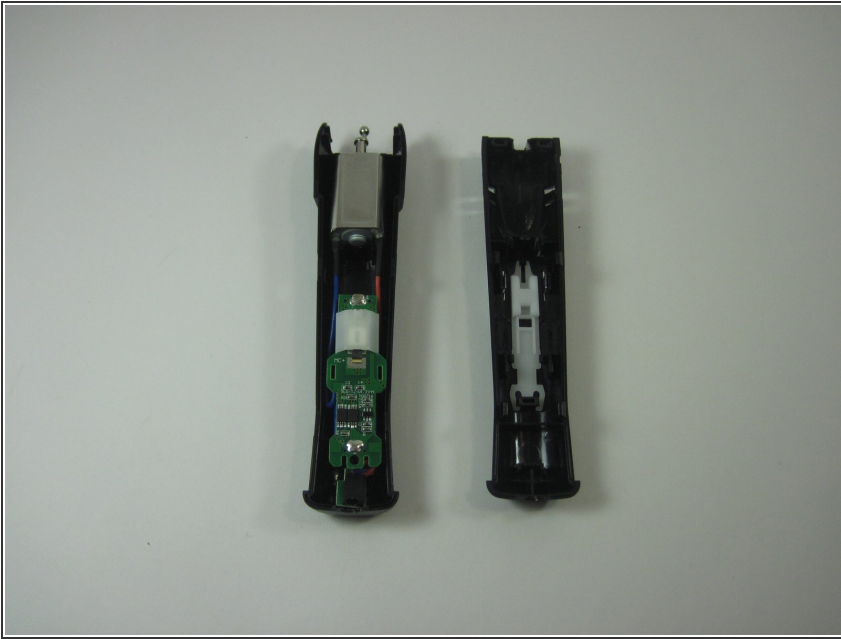
Written By: nathan



## INTRODUCTION

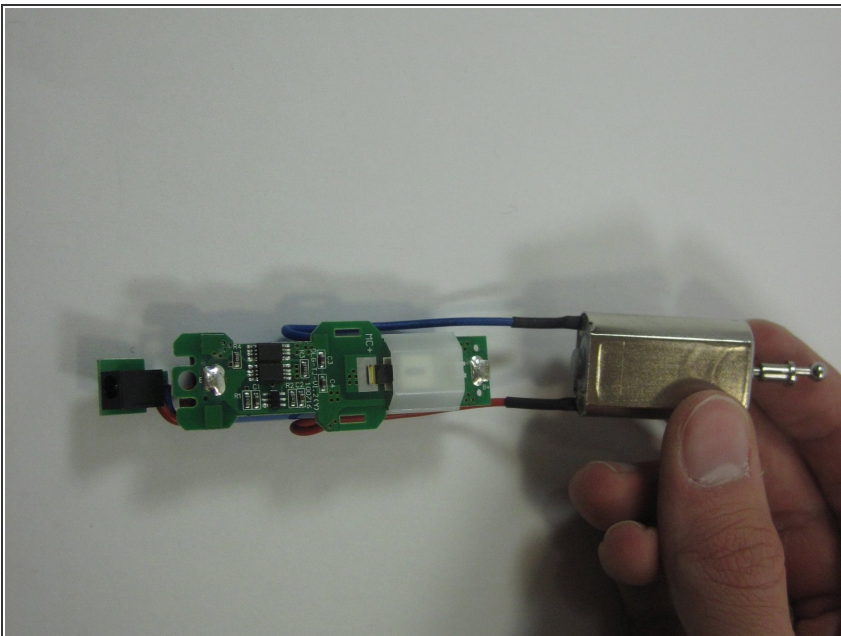
In this guide you will learn how to replace the chip set in a Wahl Lithium Ion Trimmer.

## Step 1 — Chip set



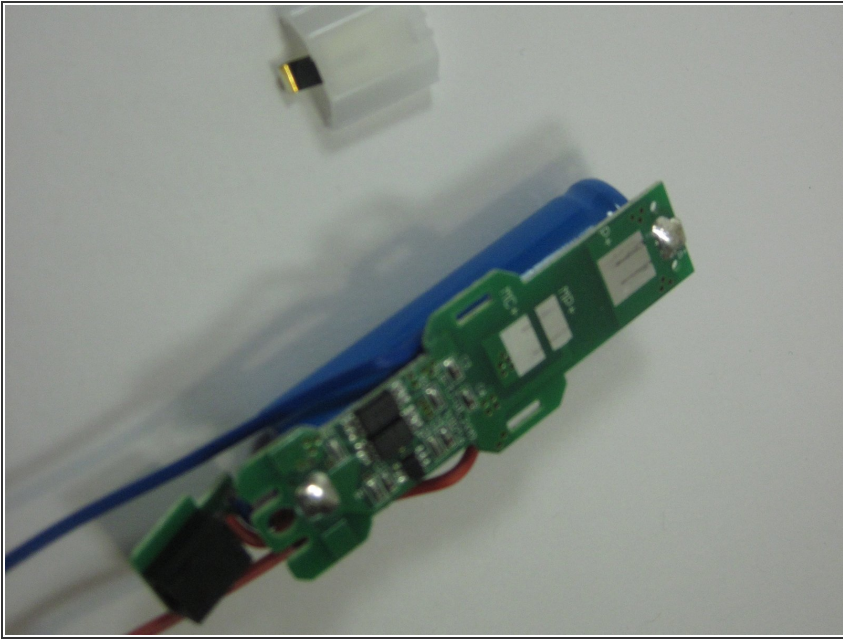
- Refer to the 4th step in Disassemble Guide which will expose the inside of the trimmer allowing access to the battery, electric motor and the chip set.

## Step 2



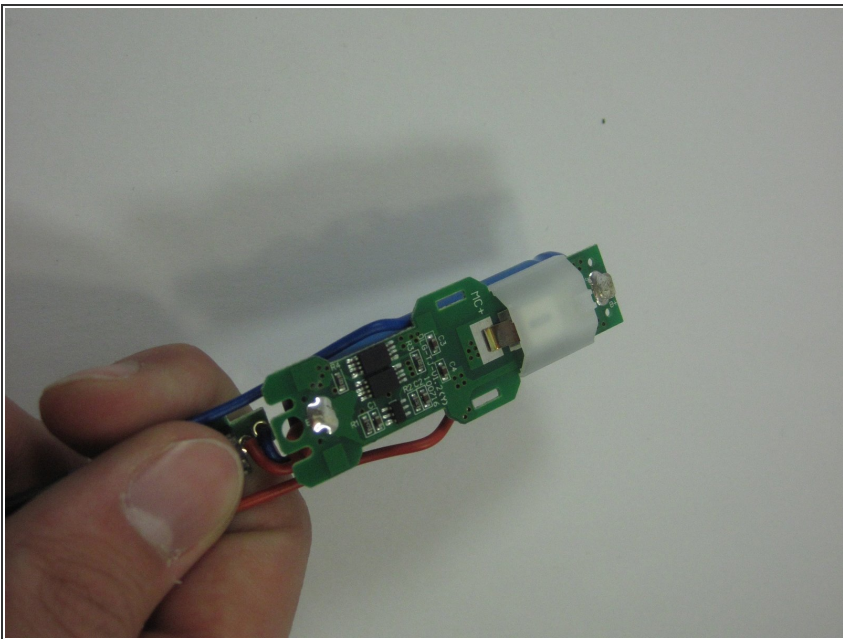
- Remove the motor, battery and chip set from the plastic casing.

### Step 3



- Remove the white plastic piece and focus on removing the wires from the chip set. If necessary cut the wires as close to the chip set as possible that way you can reconnect them to the new one.

### Step 4



- Exchange the old chip set with the new one and reconnect the wires and white piece.

To reassemble your device, follow these instructions in reverse order.