



# Disassembling General Electric Bagel Switch 4-Slice Toaster Outer Case

Replace the outer case of your General Electric Bagel Switch 4-Slice Toaster.

Written By: Ron Gajdos



---

## INTRODUCTION

This guide will explain how to remove the outer case of the General Electric Bagel Switch 4-Slice Toaster.


---

### TOOLS:

- [Phillips #0 Screwdriver](#) (1)
-


## Step 1 — Disassembling General Electric Bagel Switch 4-Slice Toaster Outer Case



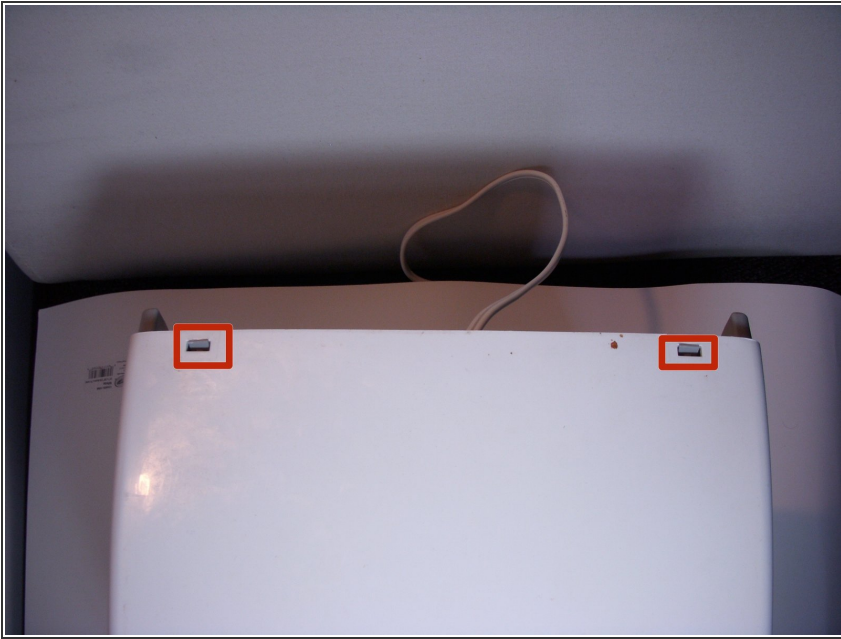
 Unplug the toaster from the electrical outlet.

## Step 2



- Remove the two levers and four dials by pulling them out directly towards you.
-  Removing these components may require some force, but they will release.

### Step 3



- Look for the plastic clips on the back side of the toaster.
- Disconnect the small plastic clips on the back of the toaster. Use Philips head Screwdriver to do this step.
- Now, carefully remove the toaster casing.

To reassemble your device, follow these instructions in reverse order.

This document was last generated on 2019-07-20 01:15:53 AM.