



Disassembling Marshall MS-2 Micro Amp Case

Disassembly

This guide will instruct you how to disassemble the amp case.

Written By: MacKinley



 **TOOLS:**

- [Phillips #000 Screwdriver](#) (1)
-

Step 1 — Case



- First be sure to turn the power switch to the off position.
- Do this by turning the leftmost knob counter-clockwise as until the line points to "off."

Step 2



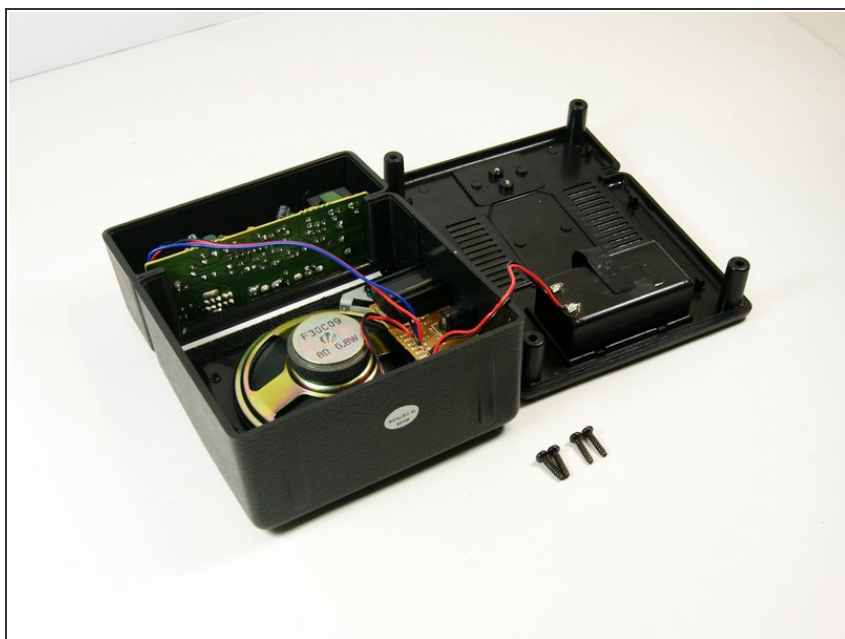
- Now remove the battery.
- On the back of the device locate the battery cover.
- Remove it by pushing down on the clip.
- Then pull the piece of fabric until the battery comes out.

Step 3



- Use the long, skinny phillips head screwdriver to remove the 4 7/16" screws on the back of the device in the four corners.
- ⓘ Once unscrewed, do not try to take each screw out. Move to next step once all screws have been unscrewed.

Step 4



- Now pull the back panel off and place it down as shown. Pull the panel straight up so you do not lose the screws.

To reassemble your device, follow these instructions in reverse order.