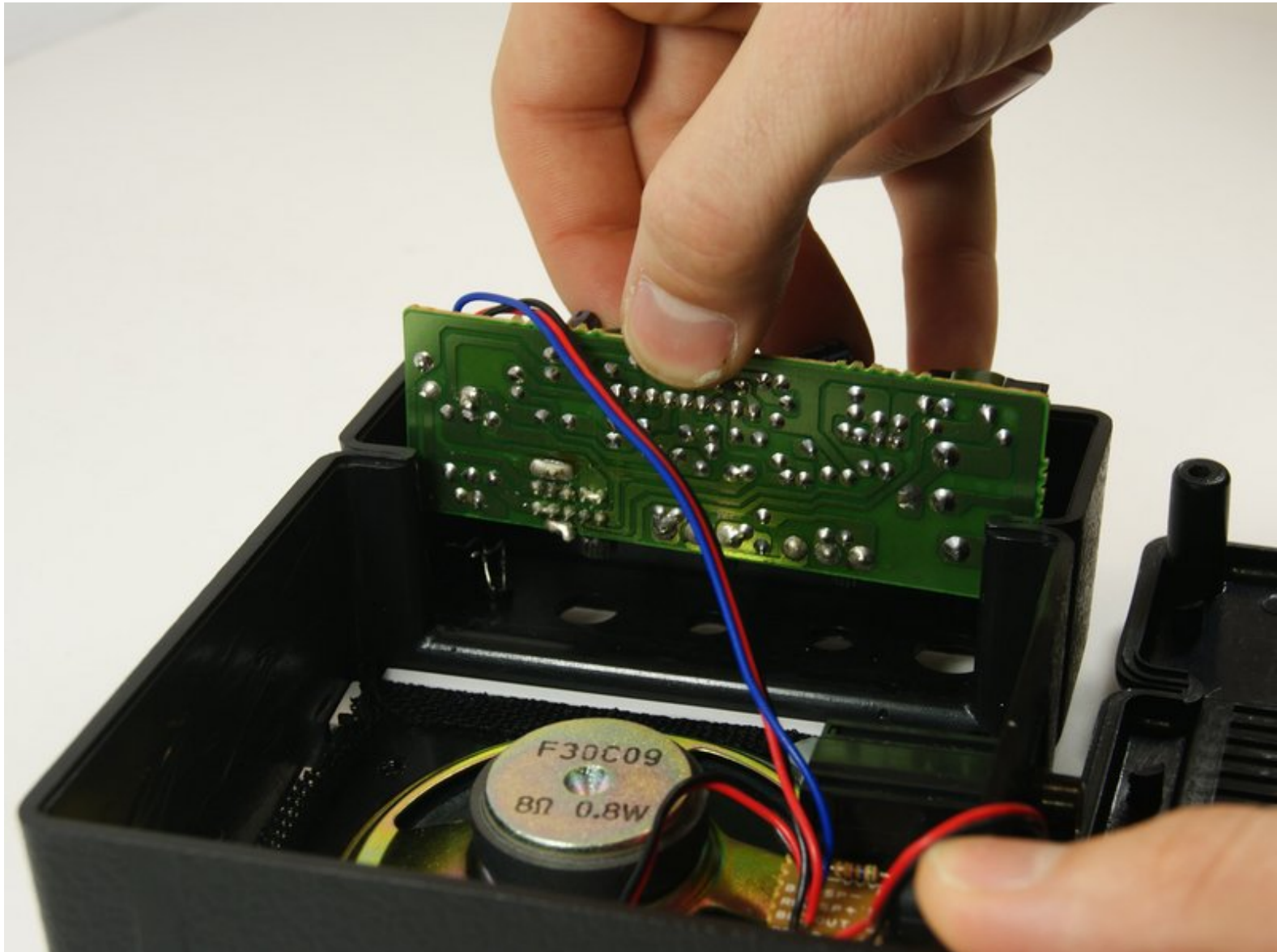




Marshall MS-2 Micro Amp Circuit Board Disassembly

This guide will instruct you how to remove the two circuit boards

Written By: MacKinley



 **TOOLS:**

- [Phillips #000 Screwdriver](#) (1)
 - [9/16" Wrench](#) (1)
-

Step 1 — Case



- First be sure to turn the power switch to the off position.
- Do this by turning the leftmost knob counter-clockwise as until the line points to "off."

Step 2



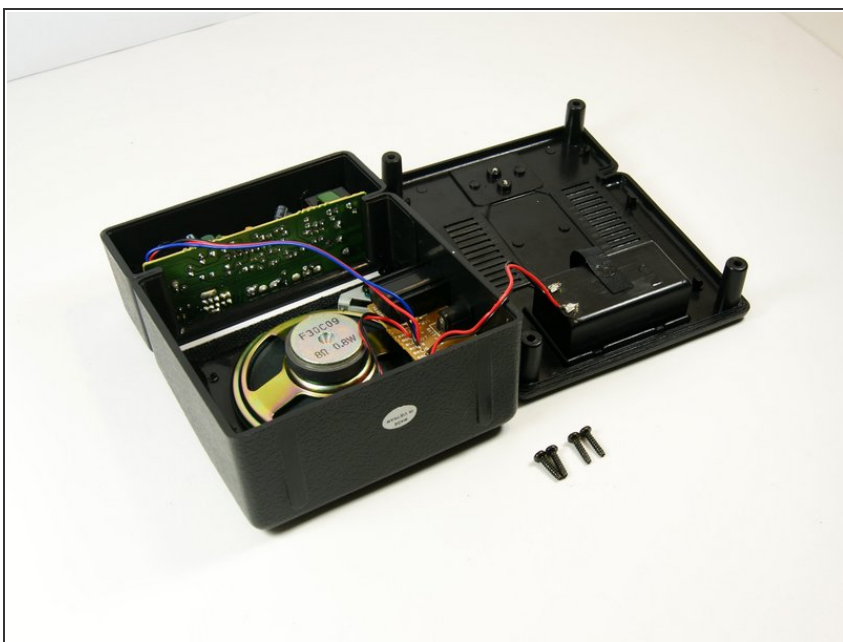
- Now remove the battery.
- On the back of the device locate the battery cover.
- Remove it by pushing down on the clip.
- Then pull the piece of fabric until the battery comes out.

Step 3



- Use the long, skinny phillips head screwdriver to remove the 4 7/16" screws on the back of the device in the four corners.
- ⓘ Once unscrewed, do not try to take each screw out. Move to next step once all screws have been unscrewed.

Step 4



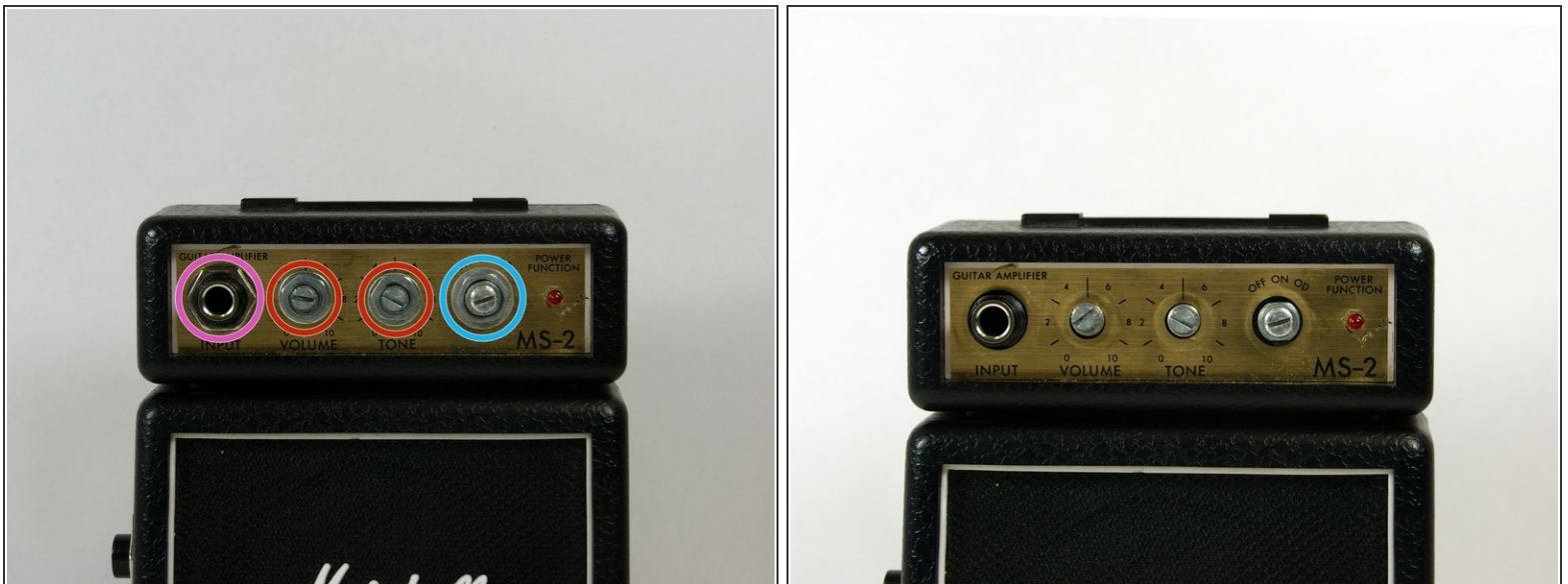
- Now pull the back panel off and place it down as shown. Pull the panel straight up so you do not lose the screws.

Step 5 — Circuit Board



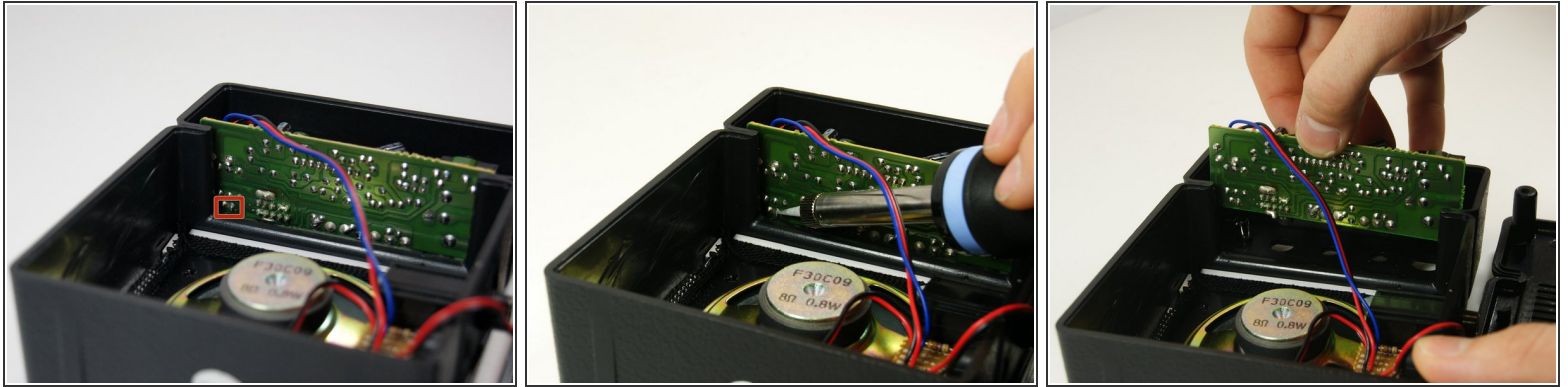
- Remove the volume, tone and power knobs by pulling them straight away from the front of the device. If they do not come off easily use the wedge tool to pry them up.



Step 6



- Use a 10mm socket to remove the nuts from the volume and tone potentiometers.
- Use a 11mm socket on the power switch nuts.
- Use a 9/16" socket to remove the nut from the input jack.
- ⓘ Take care when you remove the nuts to not lose the washers.

Step 7



- Now you must remove the LED from the circuit board.
 - To do this you will need to use a soldering iron to detach to two pins of the LED from the board. They are the two pins in the lowest leftmost corner of the board.
-  Be careful to not touch any of the wires with the soldering iron. It might be helpful to remove those with the iron first to get them out of the way.
-  [If you haven't soldered before check out this guide.](#)
- Once detached, pull the board straight up to remove.

To reassemble your device, follow these instructions in reverse order.