



Disassembling of Wahl Lithium Ion Trimmer

This guide will show you how to disassemble the Wahl Lithium Ion Trimmer in a couple easy steps.

Written By: nathan



INTRODUCTION

To replace the battery, you will very likely need a soldering iron and solder. Model number 9854L has the battery soldered to the + and - terminals.

TOOLS:

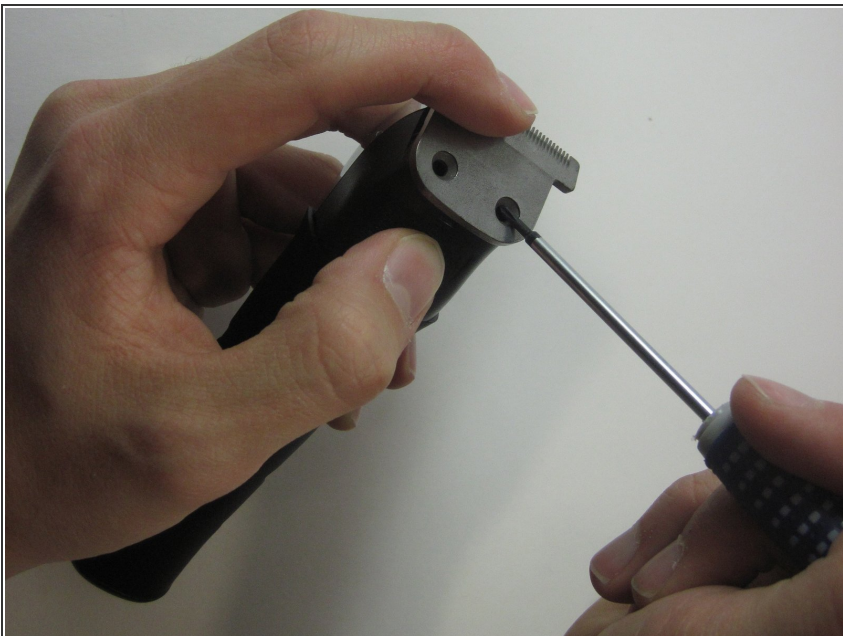
- [64 Bit Driver Kit](#) (1)
 - [Soldering Iron](#) (1)
-

Step 1 — Disassembling of Wahl Lithium Ion Trimmer



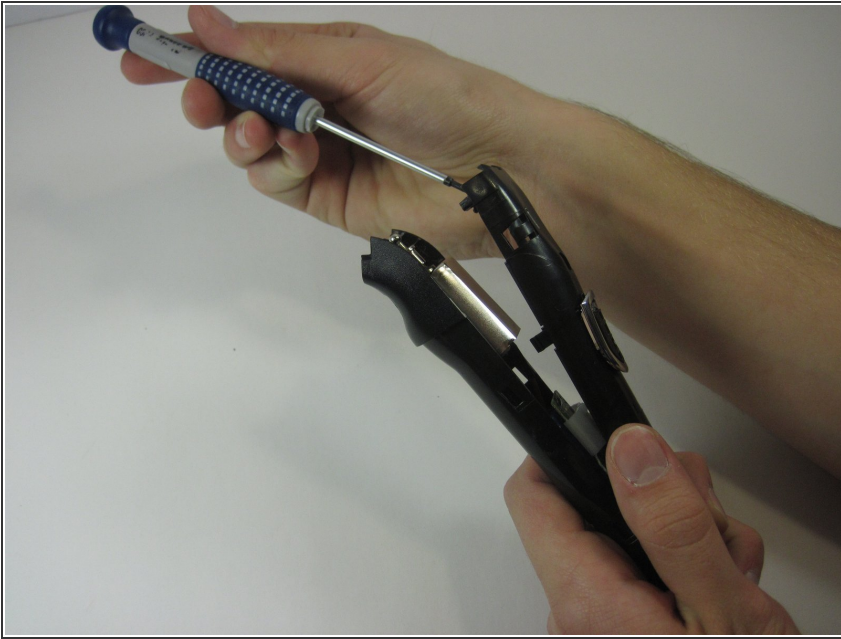
- Begin by removing the rubber grip along the handle.

Step 2



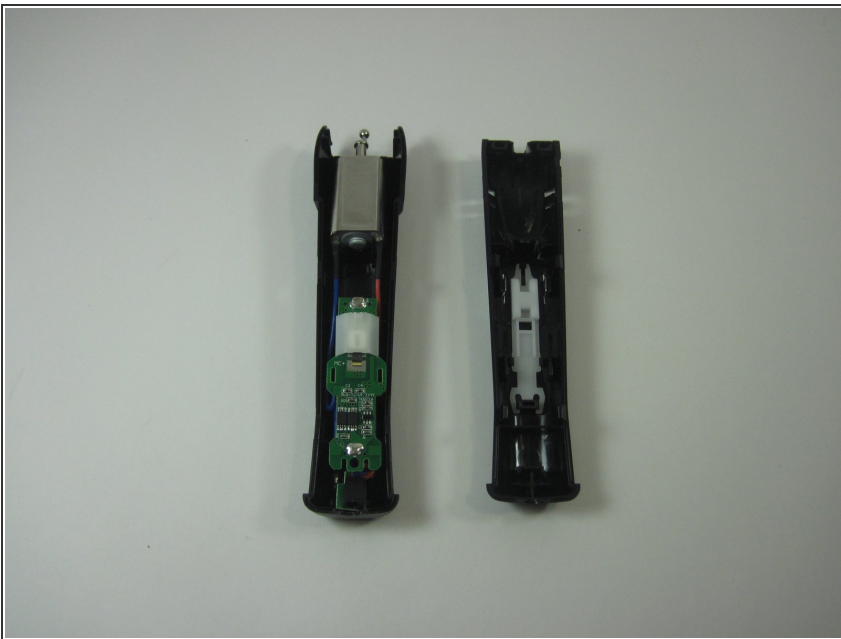
- Remove the screws from the top to take the metal piece and plastic part off.

Step 3



- Pry open the plastic cover into two separate pieces. The plastic is very durable so don't worry about breaking it upon prying it open.

Step 4



- Here is the final result. This gives access to the switch button, chip set, battery and motor.

To reassemble your device, follow these instructions in reverse order.