



Samsung SCH-U340 Internal Antenna Replacement

Written By: David Gomez



INTRODUCTION

A step by step guide to removing and replacing the Samsung SCH U340's internal antennae.

TOOLS:

- [Phillips #00 Screwdriver](#) (1)
-

Step 1 — Battery



- Turn the cell phone so that the back side is facing you. Press the upper indent and slide the back cover down.

Step 2



- Pull battery up from indent at the bottom and slide it out.

Step 3



- Set the battery aside.

Step 4 — Lower Casing



- The lower casing is held on by four screws in the corner of the battery enclosure. Remove these screws.

Step 5



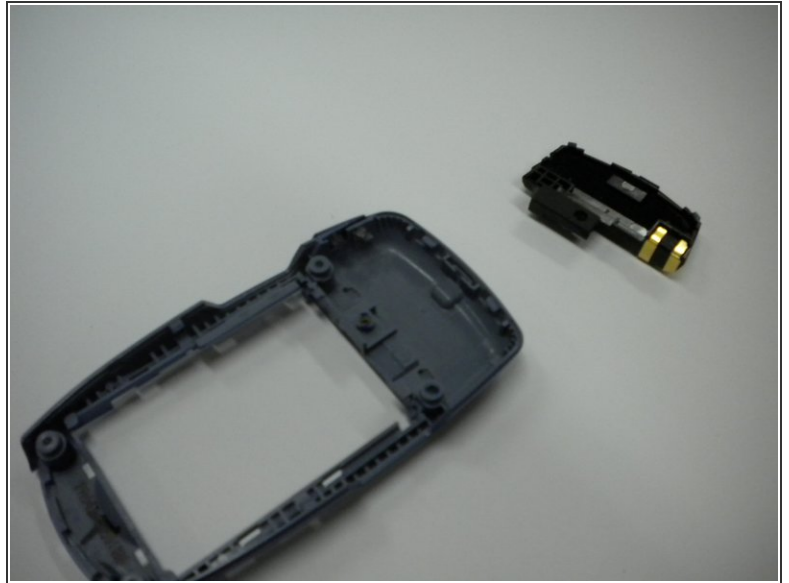
- Use a spudger to pry the back assembly off of the device.

Step 6 — Internal Antenna



- On the bottom casing, there should be a single metal screw holding the antennae in. Remove this screw.

Step 7



- Pry the antennae off by inserting a flat object such as a spudgel into the slot marked in yellow and pushing upwards.

To reassemble your device, follow these instructions in reverse order.

This document was last generated on 2019-07-10 07:47:44 PM.