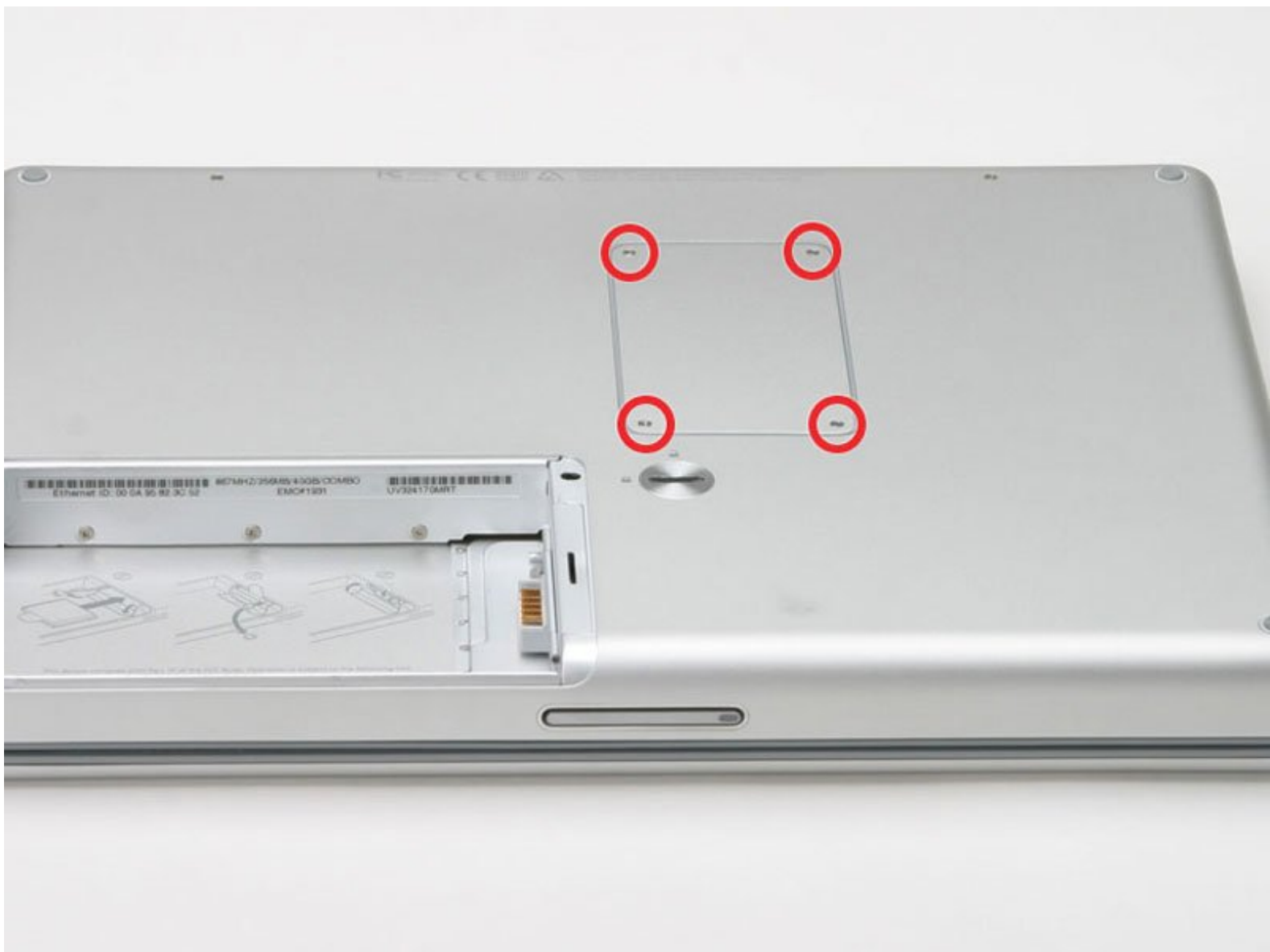




PowerBook G4 Aluminum 12" 867 MHz EMI Finger Replacement

Written By: iRobot



INTRODUCTION

Small metal finger located beneath the memory door.



TOOLS:

- [Coin](#) (1)
- [Phillips #00 Screwdriver](#) (1)



PARTS:

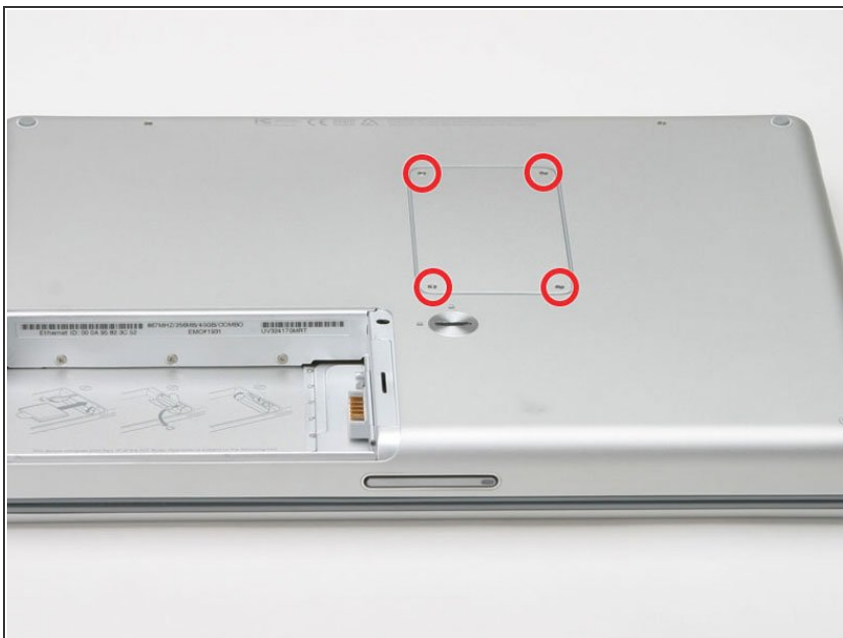
- [MacBook Pro 15" Screw Set](#) (1)

Step 1 — Battery



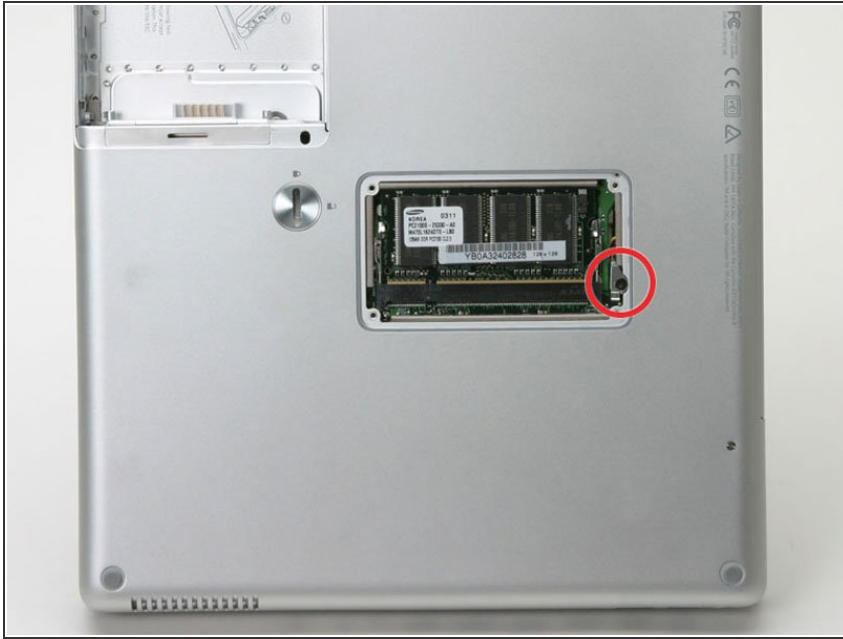
- Use a coin to turn the battery locking screw 90 degrees to the right.
- Lift the battery out of the computer.

Step 2 — EMI Finger



- Remove the four Phillips screws from the memory door.
- Slide the memory door away from the memory compartment.

Step 3



- Remove the long black Phillips screw next to the memory card.
- Remove the small EMI finger beneath the black screw.

To reassemble your device, follow these instructions in reverse order.

This document was last generated on 2019-08-20 01:19:35 PM.