



CanoScan LiDE 35 Scanner Bar Replacement

This guide will help replace the internal scanner bar.

Written By: Nick



INTRODUCTION

To replace the scanner bar, the glass must first be removed, and then the scanner bar can be easily removed and replaced.

TOOLS:

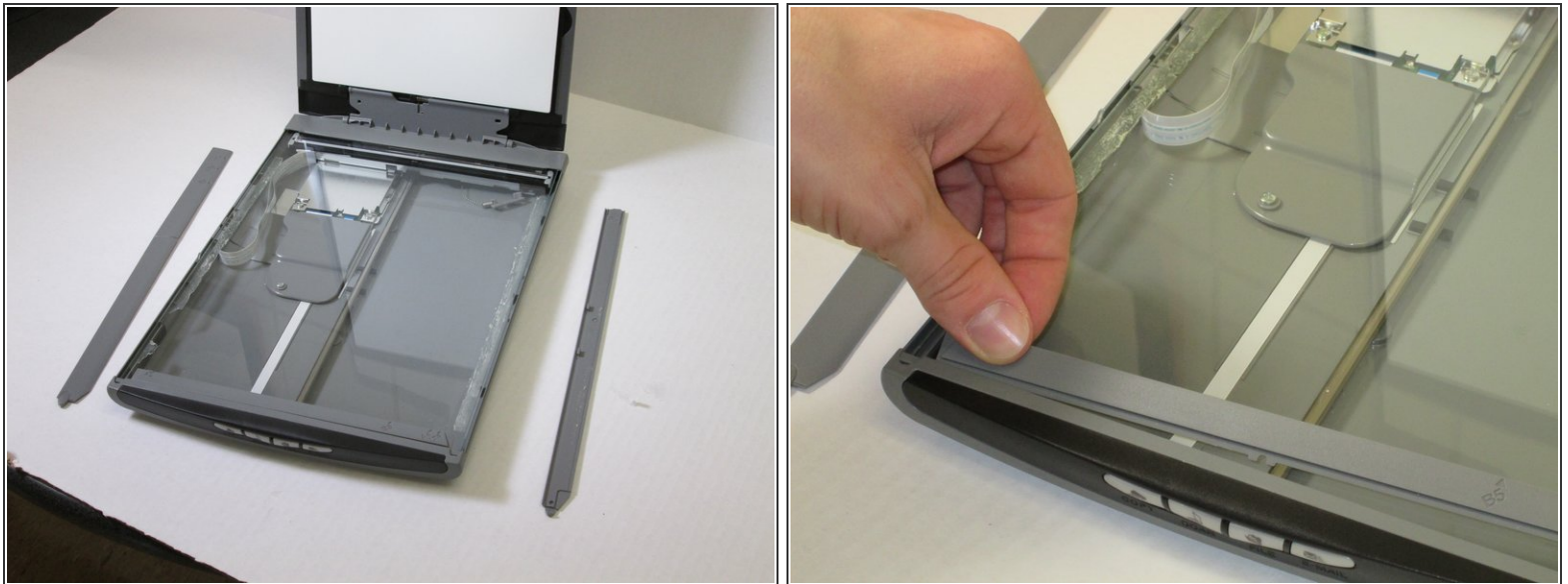
- [iFixit Opening Tools](#) (1)
-

Step 1 — Scanner Glass



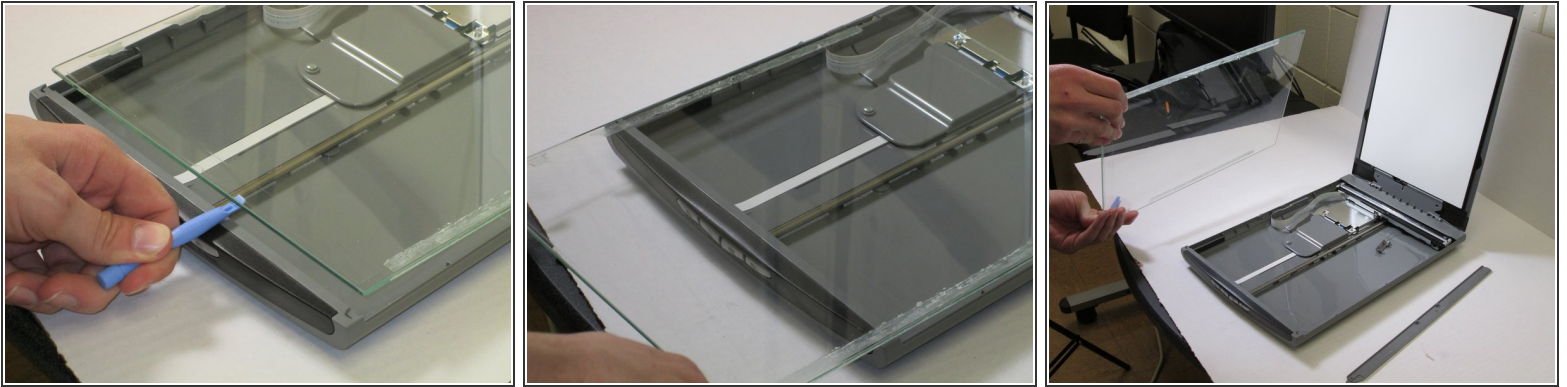
- Slide the plastic opening tool under the plastic to unpeel it from the glass.
- Gently pry the plastic framing from the glass.
- Repeat on the other side.

Step 2



- Remove the front plastic frame.

Step 3



- Wedge the plastic opening tool under the glass and pull up.
- Slide the glass forward.
- Remove the glass.

Step 4 — Scanner Bar



- Remove the scanner bar.
- Replace the scanner bar back onto metal center bar.

To reassemble your device, follow these instructions in reverse order.