



PowerBook G4 Aluminum 12" 867 MHz Keyboard Replacement

Written By: iRobot



INTRODUCTION

This guide shows the hidden screws you must remove when replacing the keyboard.



TOOLS:

- [Coin](#) (1)
- [Phillips #00 Screwdriver](#) (1)
- [Flathead 3/32" or 2.5 mm Screwdriver](#) (1)



PARTS:

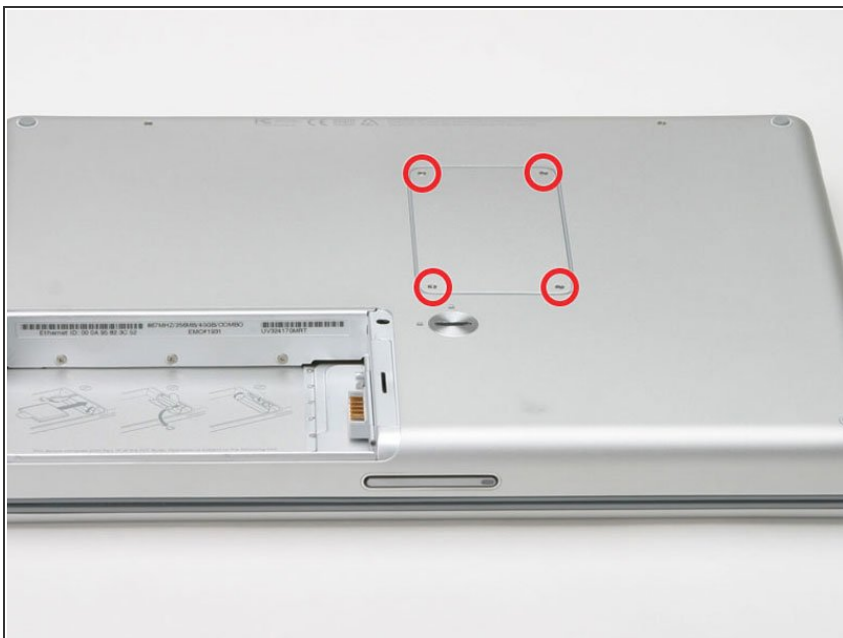
- [G4 Aluminum 12" Keyboard](#) (1)

Step 1 — Battery



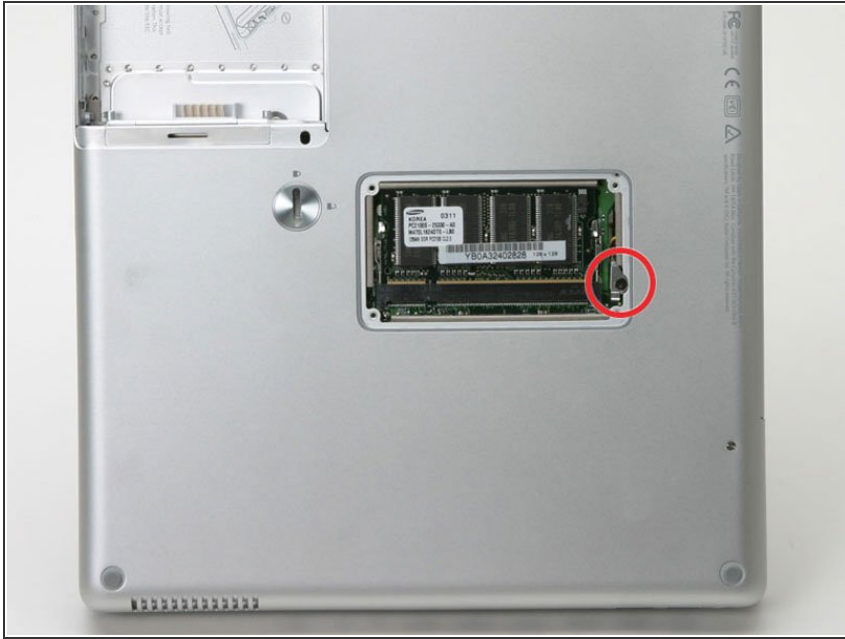
- Use a coin to turn the battery locking screw 90 degrees to the right.
- Lift the battery out of the computer.

Step 2 — EMI Finger



- Remove the four Phillips screws from the memory door.
- Slide the memory door away from the memory compartment.

Step 3



- Remove the long black Phillips screw next to the memory card.
- Remove the small EMI finger beneath the black screw.

Step 4 — Keyboard



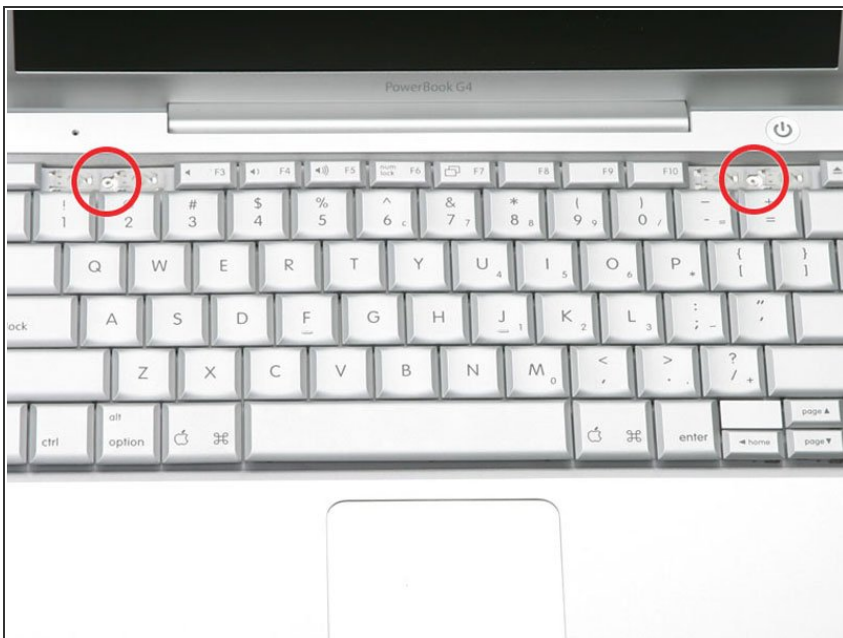
- On the keyboard, remove the F1, F2, F11, and F12 keys.
 - This is scary - take a deep breath before continuing. Place your index finger under the upper left corner of the key and lift up until you hear a click. Then, transfer your finger to the left edge of the key and lift up to pull the key off.
 - You're freeing the two tabs on the left of the key from the two small holes in the plastic scissors mechanism.
- ★ When replacing the keys in the keyboard, place the key directly over the slot where it will go and press down until you hear the key click into place.

Step 5



- Use your fingernail or a small flathead screwdriver to peel up the gray stickers covering each of the screws.

Step 6



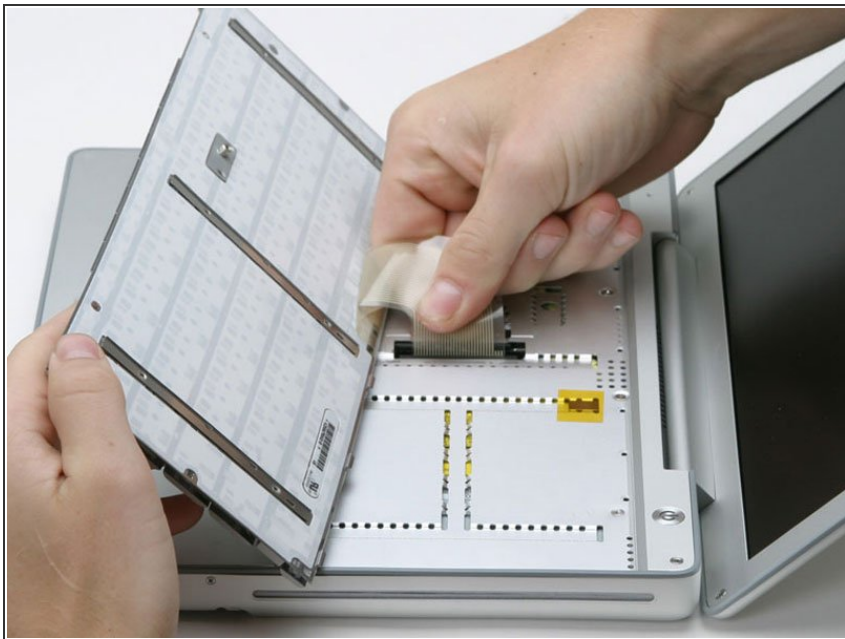
- Remove the two short Phillips screws.

Step 7



- Lift the keyboard by the 'esc' and 'eject' keys and gently lift up until the keyboard is vertical.

Step 8



- Grasp the keyboard connector ribbon near the connector and disconnect it from the logic board.

To reassemble your device, follow these instructions in reverse order.

This document was last generated on 2019-07-16 10:59:48 PM.