



Motorola W385 Battery Replacement

Written By: Austin Hobbs



INTRODUCTION

Battery not holding charge or damaged? Replace it.



TOOLS:

- [Spudger](#) (1)



PARTS:

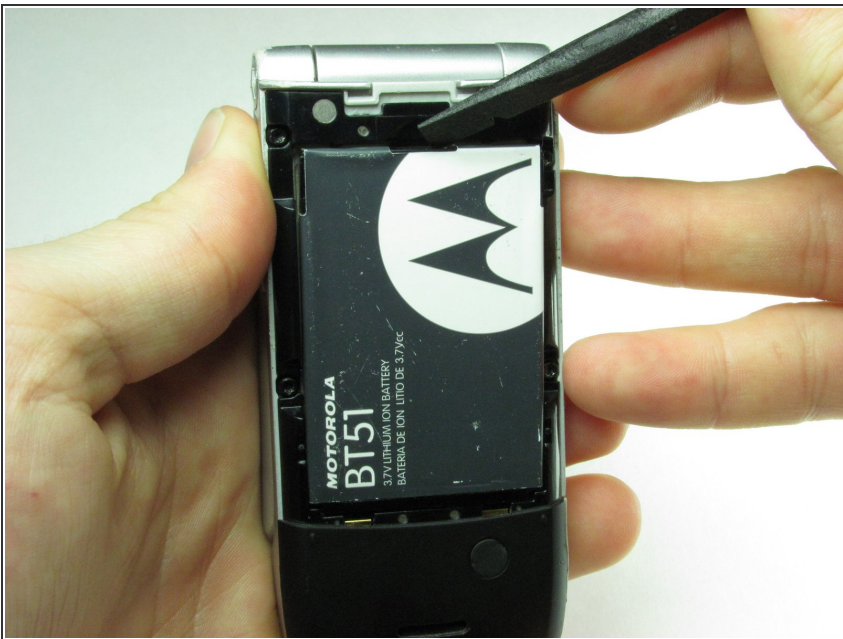
- [Motorola W385 Replacement Battery](#) (1)

Step 1 — Battery



- Using your finger, press down on the clip holding the back cover on.

Step 2



- Using the spudger or your finger, gently pull the battery out from the top.

To reassemble your device, follow these instructions in reverse order.