



Mercedes W123 Windshield Washer Fluid Bottle and/or Pump Replacement

Mercedes W123 Windshield Washer Fluid Bottle and/or Pump Replacement

Written By: Nicolas Siemsen



INTRODUCTION

Windshield washer fluid might seem like kind of a boring topic; the only time it seems important is when you really need it most. Don't let a leaky bottle or bad pump ruin your day, replace them now.

PARTS:

- [W123 Windshield washer bottle](#) (1)

part # 1238690720

- [W123 Windshield washer pump](#) (1)

part # 2028690021

- [W123 Windshield Washer Bottle Grommet](#) (1)

part # 1239973681

- [W123 Windshield Washer Bottle Cap](#) (1)

part # 1248690172

Step 1 — Windshield Washer Fluid Bottle and/or Pump



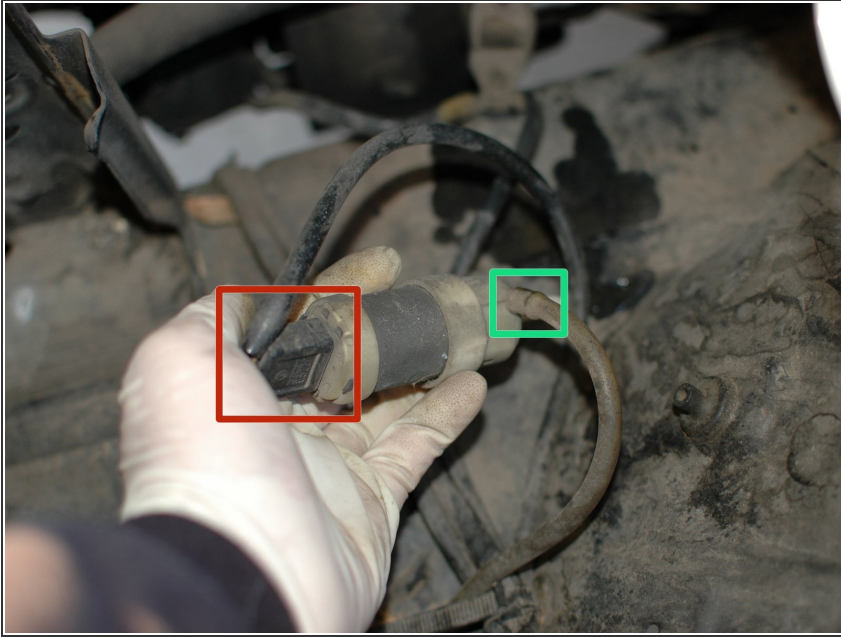
- The windshield washer bottle is not attached to the car with any screws, nuts, or bolts. It simply sits in a bracket that holds it in place.
- To remove your washer bottle pull it up and out of this bracket.

Step 2



- If you are performing this job because your washer bottle is leaking now is the time to inspect the bottle for cracks.
- If no cracks are found then inspect the spot where the pump enters that bottle.
- The pump is not held in by any fasteners, instead it is a friction fit in a whole at the bottom of the bottle. There is a rubber grommet that seals this whole and seals the pump to the bottle. This grommet may be the source of your leak.
- Whether you need a new bottle due to cracks, a new grommet due to leaks from the seal, or a new pump because the one on your car has failed, you will now need to remove the pump from the bottle. To do this pull the pump up, and then outwards away from the bottle.

Step 3



- To replace the pump, start by unplugging the electric connection at the top.
- Then disconnect the plastic hose from the bottom.
- Replace with new pump, reconnecting the electric connection and plastic hose.

Step 4



- To finish, re-install the pump (old, if working, or new) in to your washer bottle (old, if good, or new, and possibly with new rubber grommet).
- Then simply re-insert the bottle in to the retaining bracket.
- On this car the pump worked fine, and the washer bottle and grommet were both OK. The bottle was simply very dirty and filled with really old, gross washer fluid. The bottle was simply removed, emptied, and cleaned and then refilled with a mix of water, isopropyl alcohol for freeze-prevention, and a few drops of dish soap.

To reassemble your device, follow these instructions in reverse order.