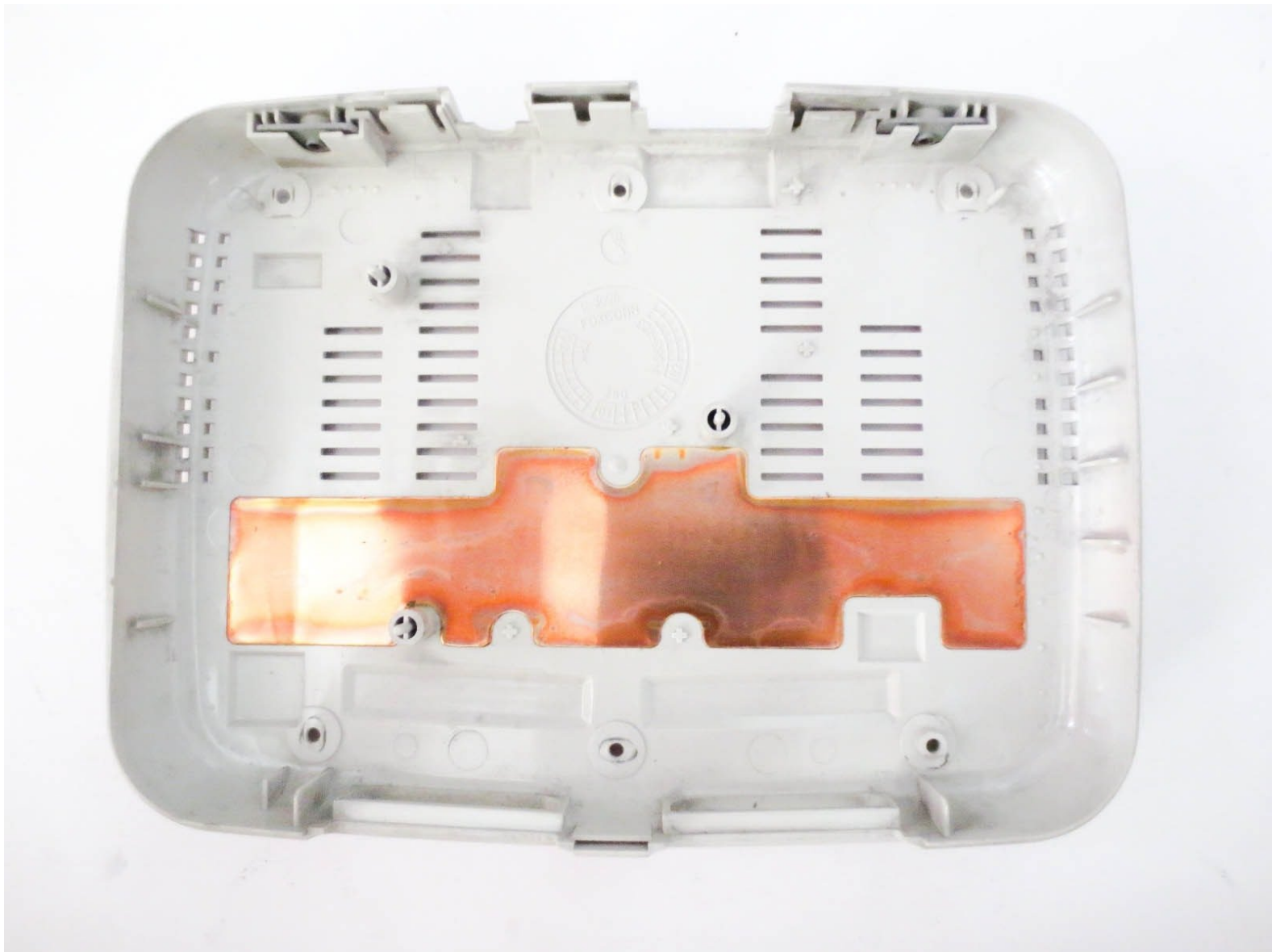




PlayStation One Lower Case Replacement

This will guide you in replacing of your PlayStation One's Lower Case.

Written By: trickster



 **TOOLS:**

- [Phillips #1 Screwdriver](#) (1)
-

Step 1 — Upper Case



- Remove all cables plugged into the PlayStation.

Step 2



- Flip over the PlayStation and remove the six screws from the bottom.

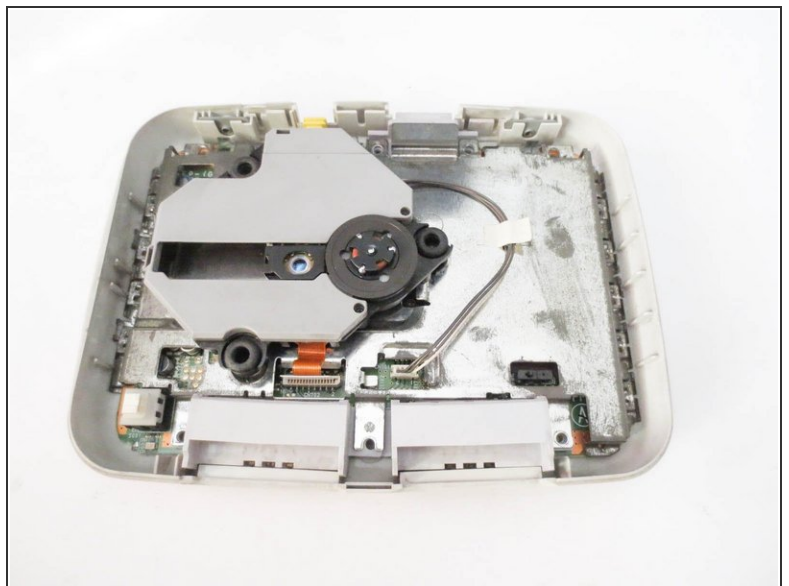
Step 3



- Flip the PlayStation back.

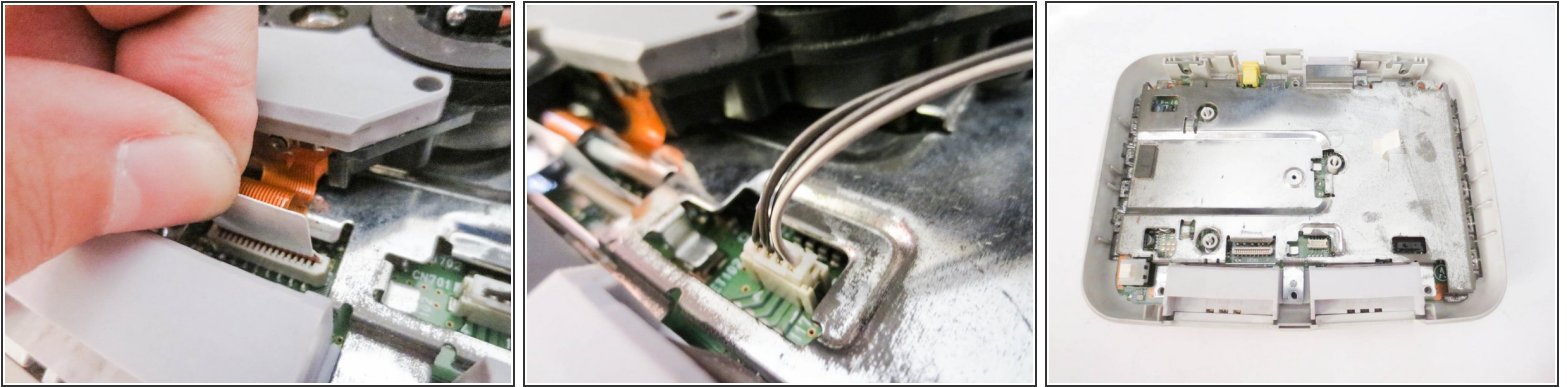
⚠ There are no screws holding **EVERYTHING** inside the PlayStation so better hold it like a burger while flipping.

Step 4



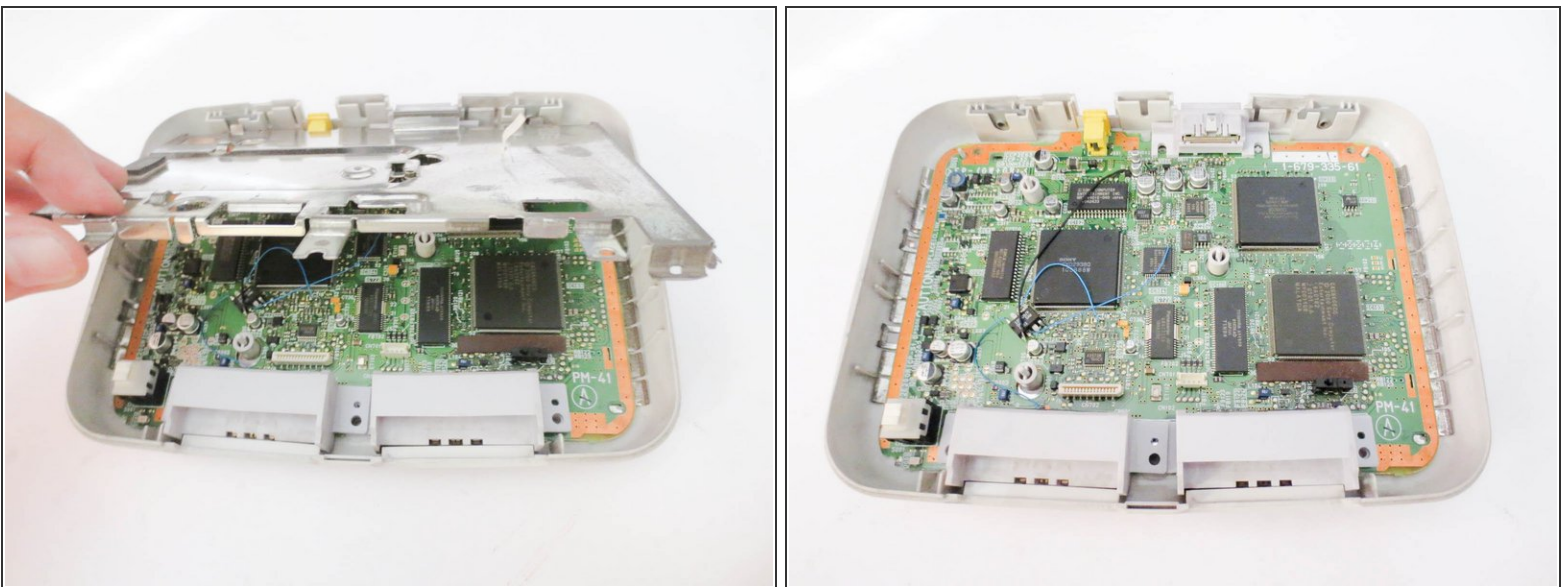
- Lift up and remove the upper case.

Step 5 — Lens



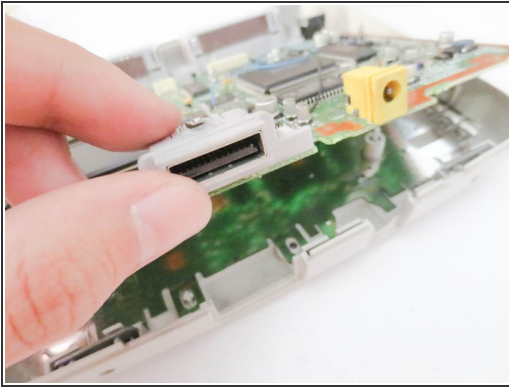
- Disconnect the ribbon cable and wired cable connectors.
- Take extreme care when disconnecting ribbon cable from motherboard. Tears extremely easy.

Step 6 — Mother Board



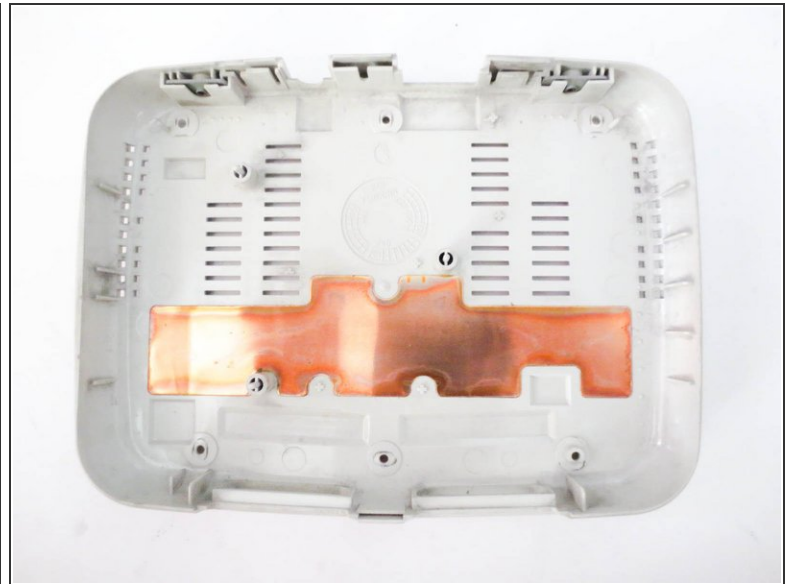
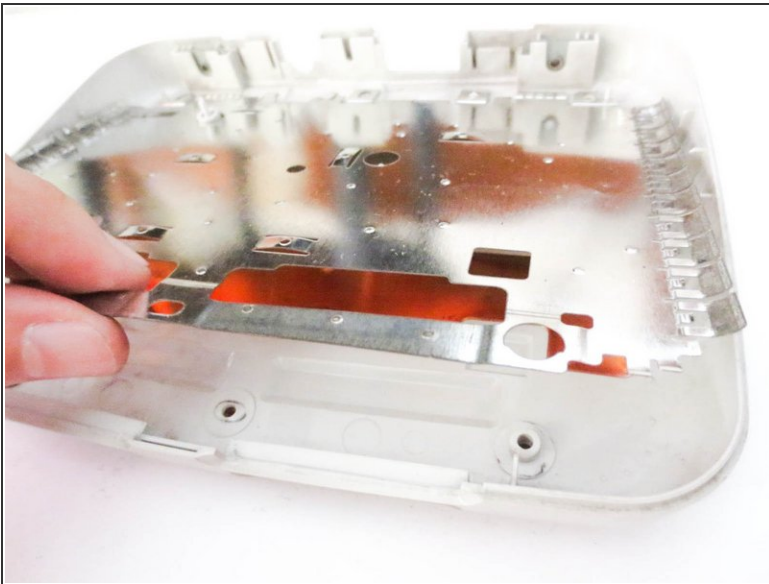
- remove the metal plate

Step 7



- remove the motherboard by lifting the back.
- ⓘ if you're having a hard time removing it, use your nail and lift the second controller port.

Step 8 — Lower Case



- Remove the metal case.

To reassemble your device, follow these instructions in reverse order.