



Microsoft Surface Pro 2 SSD Replacement

Written By: Ronnie





TOOLS:

- [T5 Torx Screwdriver](#) (1)
- [T4 Torx Screwdriver](#) (1)
- [T3 Torx Screwdriver](#) (1)
- [iOpener](#) (1)
- [iFixit Opening Picks set of 6](#) (4)
- [Spudger](#) (1)
- [Phillips #00 Screwdriver](#) (1)



PARTS:

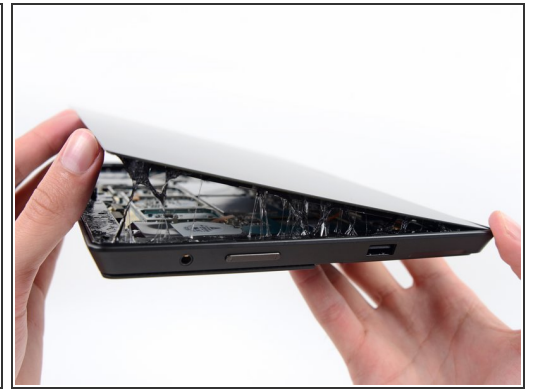
- [mSATA SSD](#) (1)

Step 1 — SSD



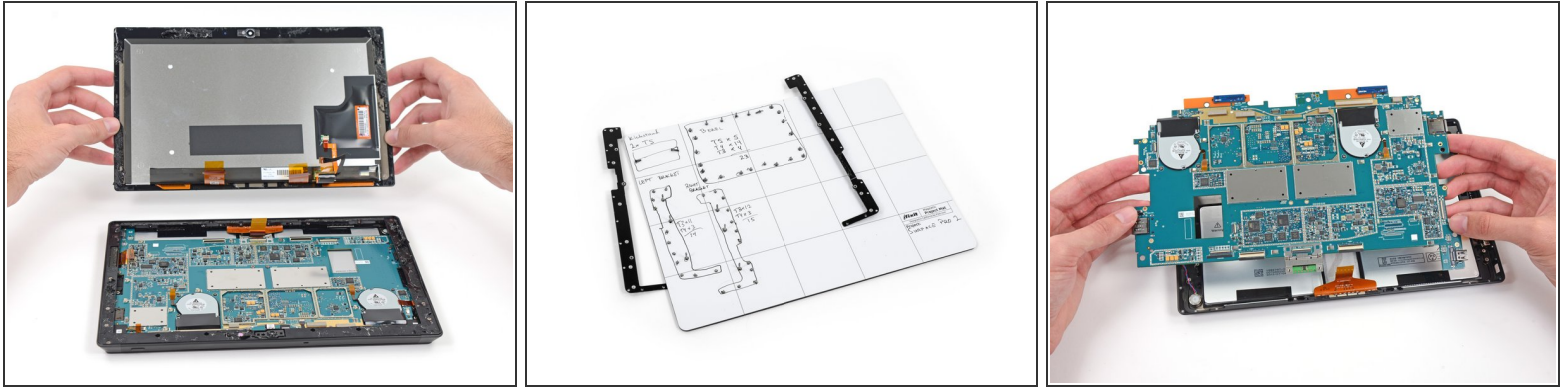
- Remove the two T5 Torx screws, then take off the kickstand.

Step 2



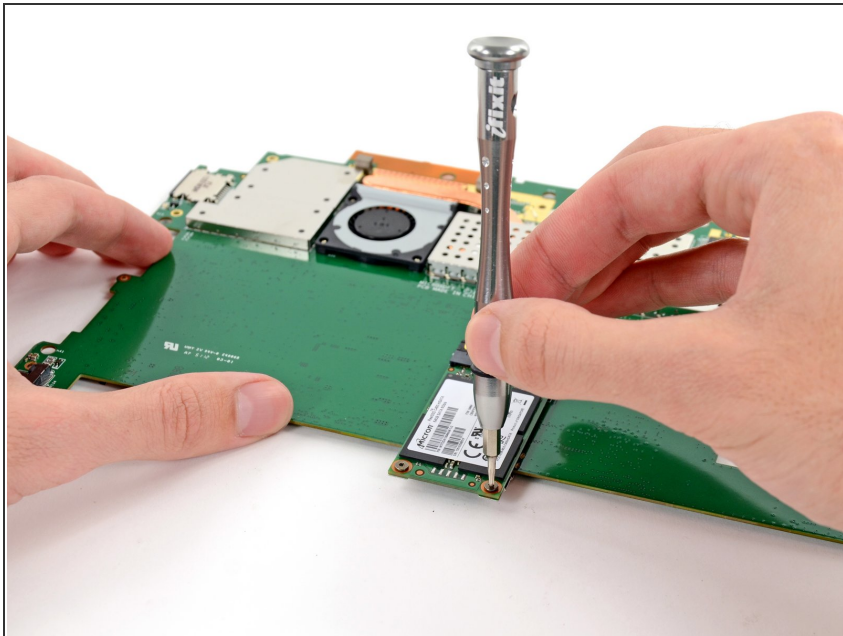
- Use an iOpener or heat gun to melt the adhesive.
- Insert 21 opening picks under the display.
- Slowly lift off the display.

Step 3



- Remove the four ribbon cables connecting to the motherboard with a spudger.
- Remove the 52 screws securing the motherboard to the metal plates and the plastic bezel.
- Lift off the motherboard.

Step 4



- Unscrew the two screws on the mSATA SSD and remove the SSD. (Note: This image is from a first generation Surface Pro, but it works)

To reassemble your device, follow these instructions in reverse order.