



Mac Pro Late 2013 SSD Replacement

Replace the SSD in your Mac Pro Late 2013.

Written By: Andrew Optimus Goldheart



INTRODUCTION

Use this guide to replace the SSD in your Mac Pro.



TOOLS:

- [T8 Torx Screwdriver](#) (1)



PARTS:

- [OWC Aura Pro X2 SSD](#) (1)

Step 1 — Outer Case



- Slide the lock switch to the right, to the unlocked position.

Step 2



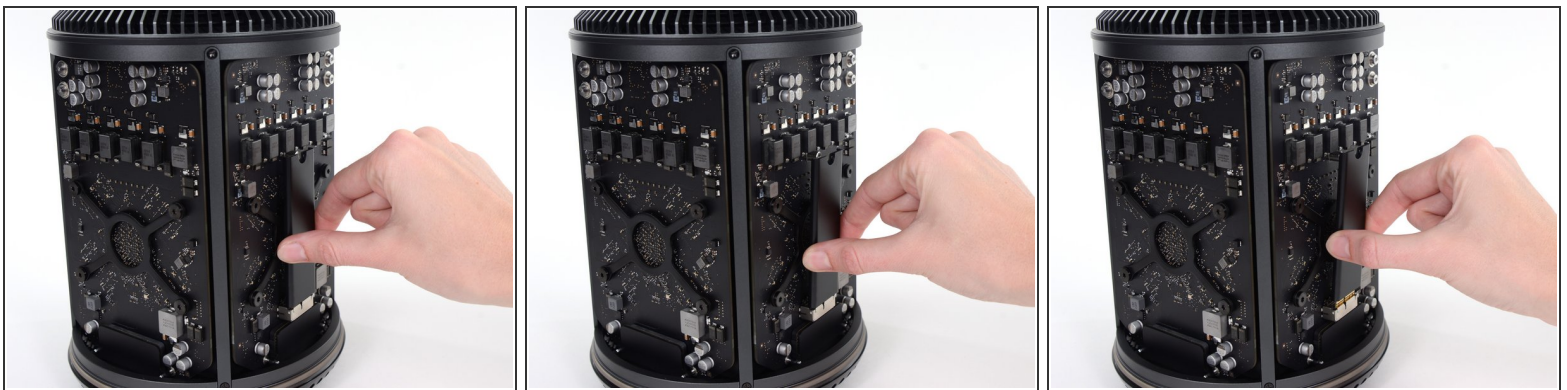
- Lift the outer case straight up off the Mac Pro.
- ⓘ It may help to push down on the center of the fan while lifting the case up.

Step 3 — SSD



- Remove the single 6.5 mm T8 Torx screw.

Step 4



- Pull the SSD slightly away from the graphics card.
- ⚠ Do not pull the top edge of the SSD more than 1/2" away from the graphics card, or you will risk damaging it.
- Lift the SSD straight up out of its slot on the graphics card.

To reassemble your device, follow these instructions in reverse order.