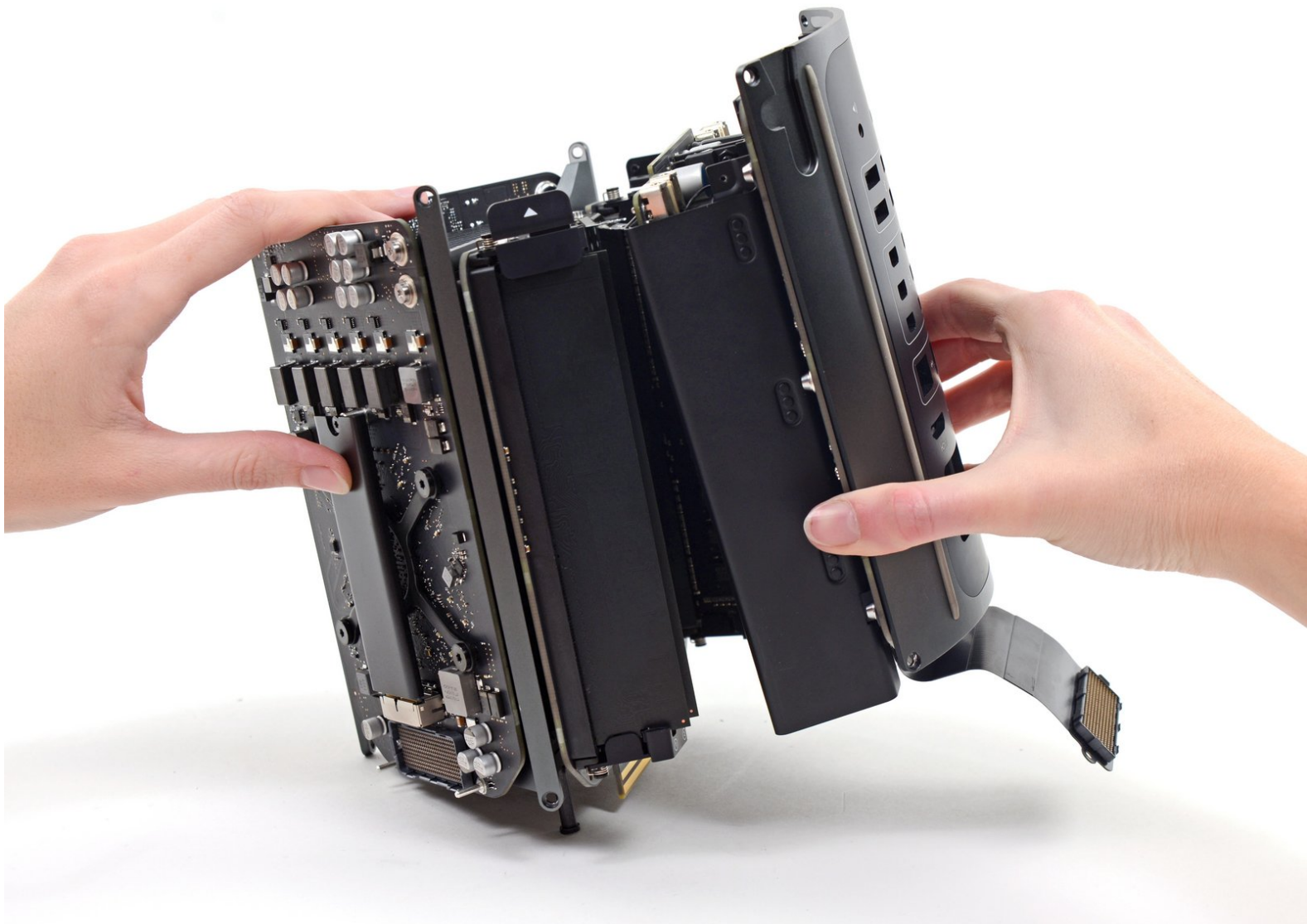




Mac Pro Late 2013 Power Supply Assembly Replacement

Prereq only.

Written By: Andrew Optimus Goldheart



INTRODUCTION

Prereq only.

TOOLS:

- [T5 Torx Screwdriver](#) (1)
 - [T8 Torx Screwdriver](#) (1)
-

Step 1 — Power Supply Assembly



- Flip the Mac Pro back over and set it gently on a flat surface.
- ⓘ We recommend laying the Mac Pro on the corner of the heat sink and the two standoff screw posts that attach to the interconnect board.

Step 2



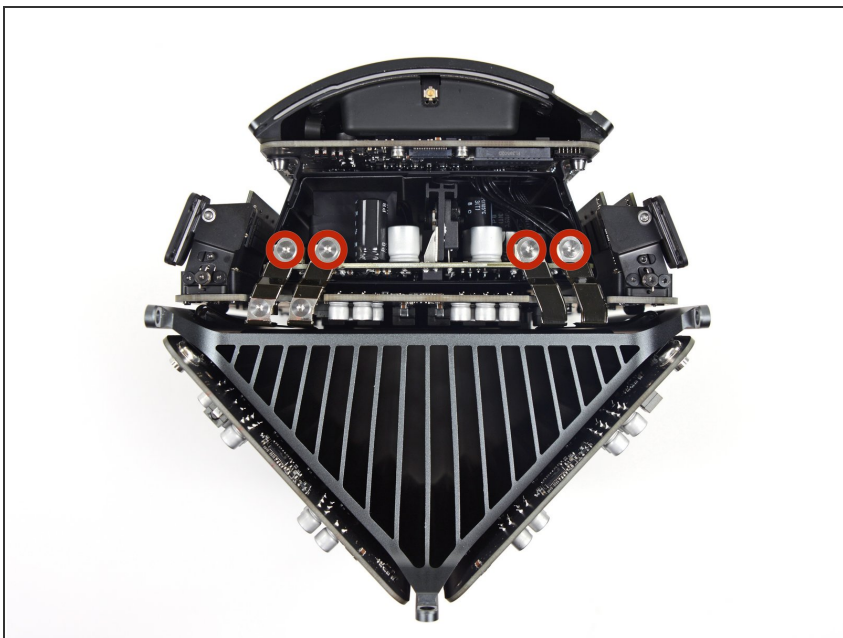
- Remove the two 3.6 mm T5 Torx screws from the sides of the power supply cage (one on each side).

Step 3



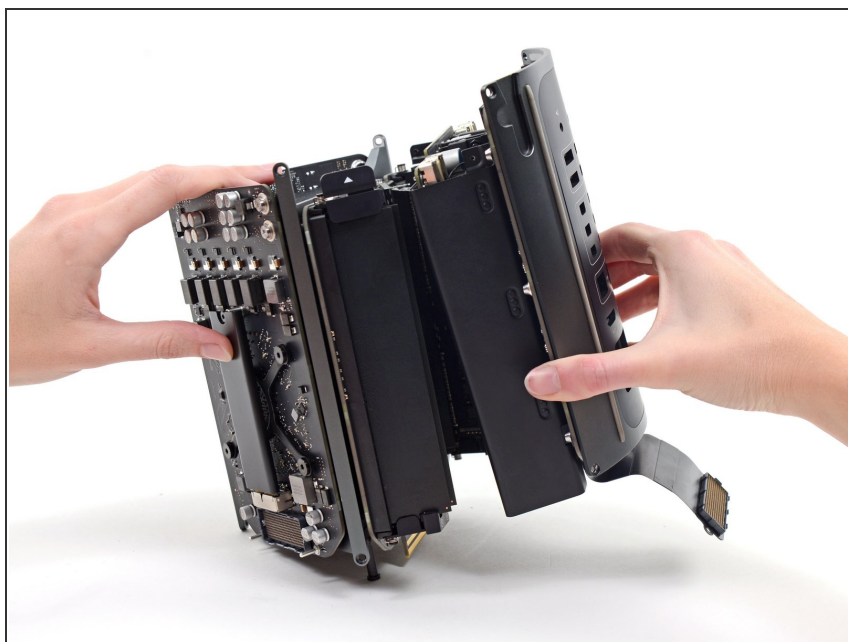
- Remove the power supply cage from the top of the power supply.
- ⚠ By removing this cage, you are exposing internal components of the power supply. Be very careful not to touch any of the power supply components or circuitry.
- ⓘ Be careful not to drop any screws or tools into the power supply, as this may damage the power supply.

Step 4



- Remove the four 5.5 mm T8 Torx screws securing the power supply assembly to the Mac Pro.

Step 5



- Remove the power supply assembly from the Mac Pro.

To reassemble your device, follow these instructions in reverse order.

This document was last generated on 2019-07-18 02:39:16 PM.