



# Polaroid Sun 600 LMS Lens Replacement

Written By: Ian Hosek



## INTRODUCTION

Replacing a broken or scratched lens on a Polaroid Sun 600 LMS.



### TOOLS:

- [iFixit Opening Tools](#) (1)
- [Spudger](#) (1)



### PARTS:

- [Replacement Lens](#) (1)

## Step 1 — Lens



- Move film door slide on the left side of camera forward.
- Pull film door open.

## Step 2



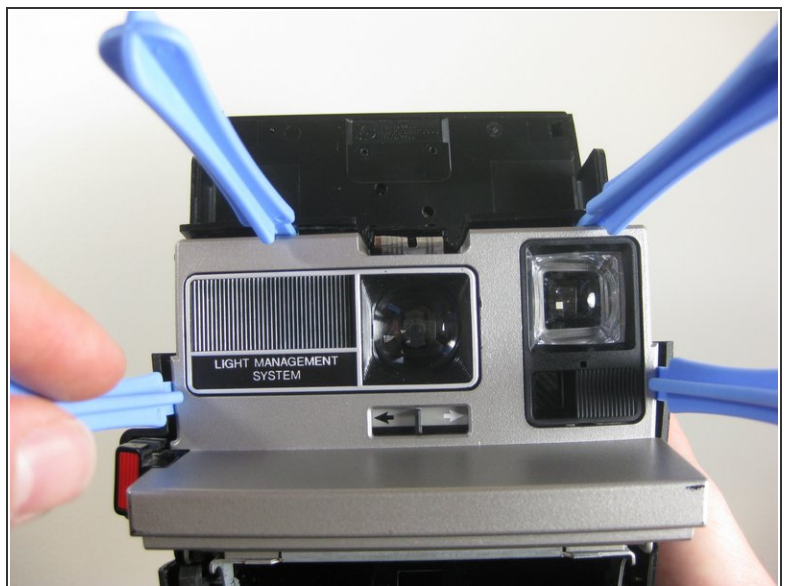
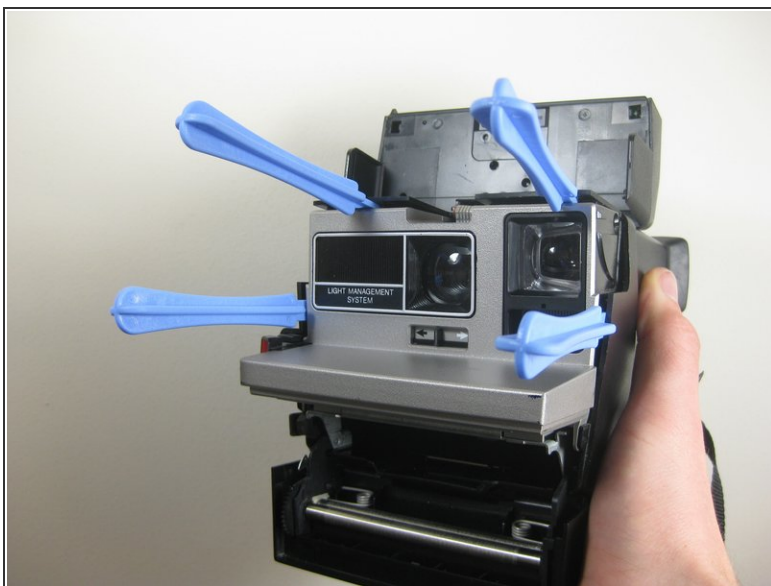
- Open the flash assembly by holding the sides of the top piece of the camera and pushing up gently until it snaps into place.
- ⓘ If your camera is old or dirty, it may take more force to open the flash assembly.

### Step 3



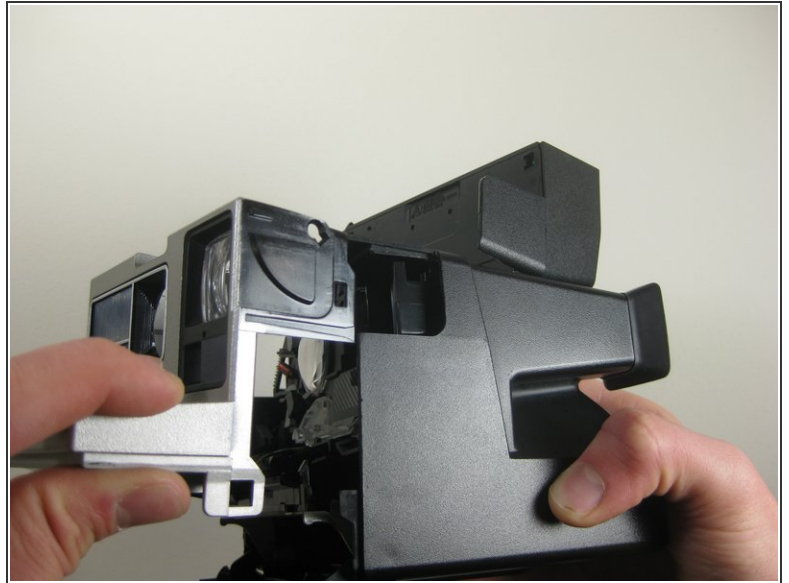
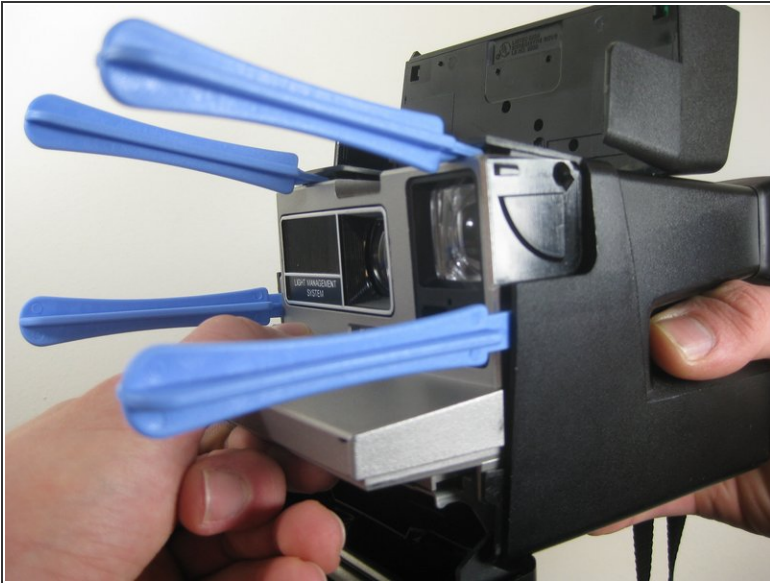
- Use a spudger on each side to separate the flash segment from the main body.
- ⚠ Be careful not to do this too hard because you may pull out the connecting wires.

### Step 4



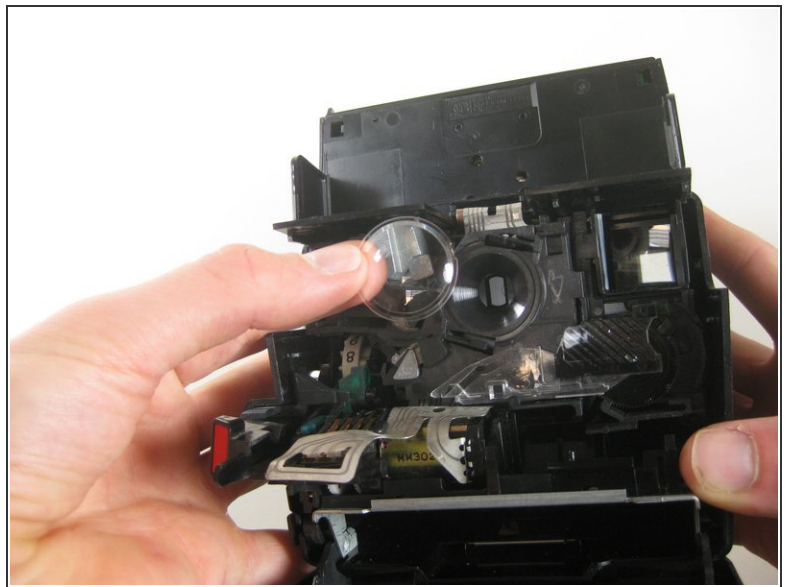
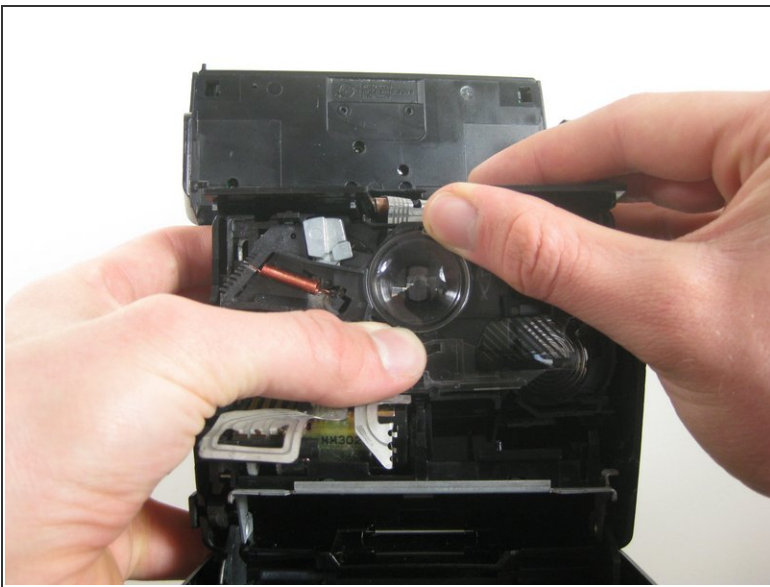
- Use several plastic opening tools around the edges of the camera's body to separate it from the plastic frame.

## Step 5



- Place left hand on the gray section and right hand on the black section.
- Pull the sections apart.

## Step 6



- Carefully remove the damaged lens from the interior of the camera.
- Replace with a new lens.

To reassemble your device, follow these instructions in reverse order.