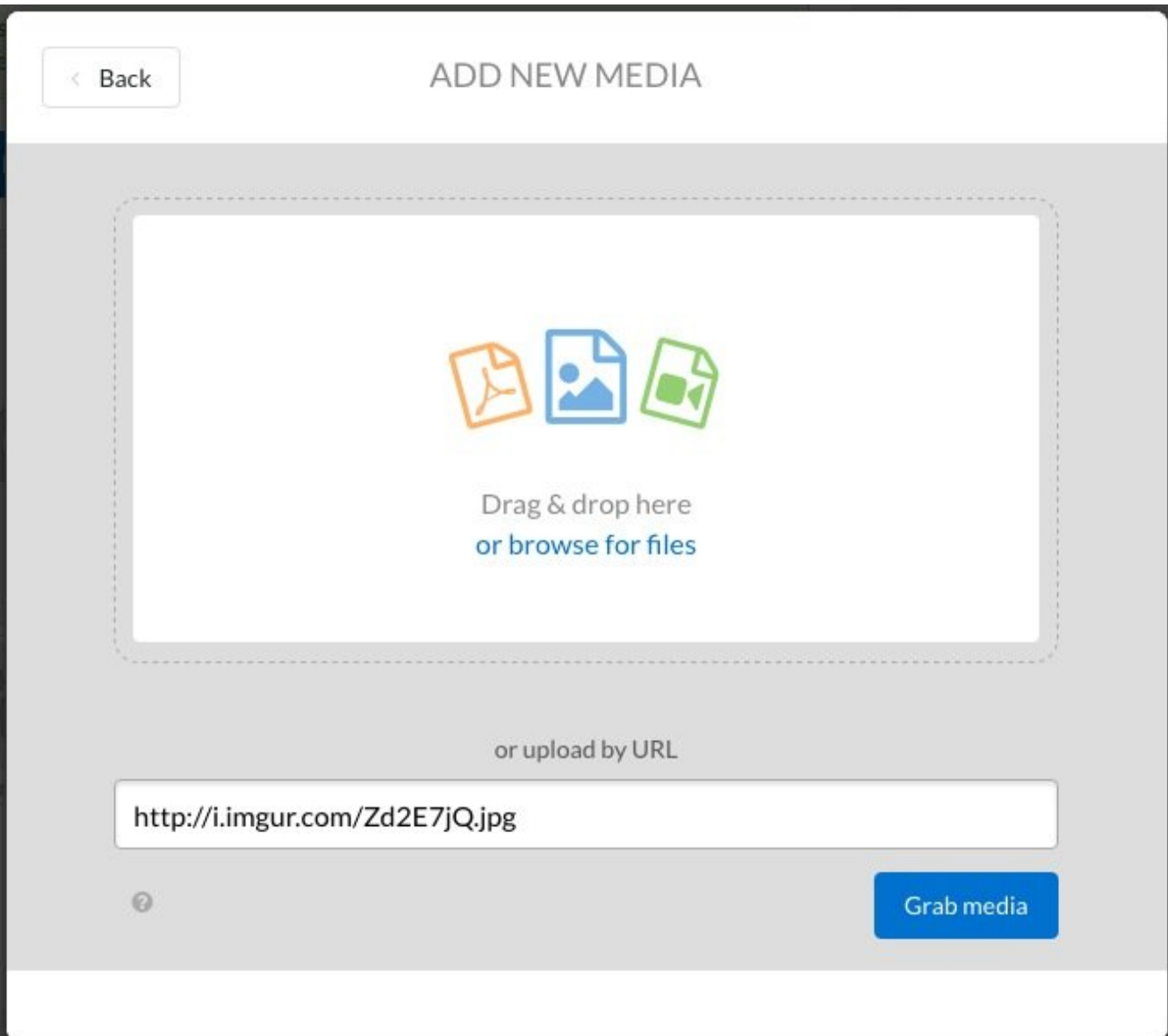




# Adding images to an existing question

Sometimes we forget or want to add images later, to our questions or answers. This will show how to add those images.

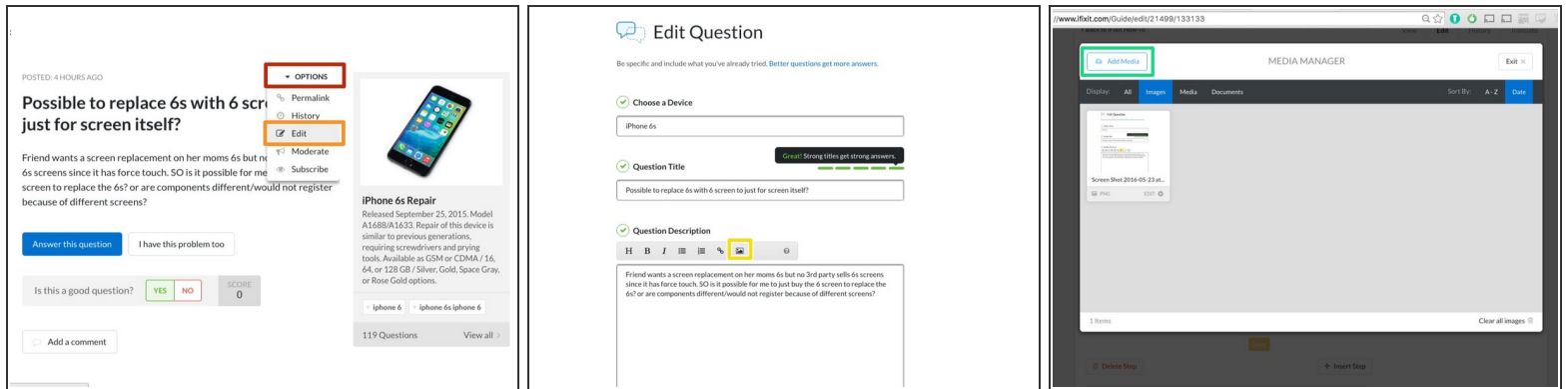
Written By: oldturkey03



## INTRODUCTION

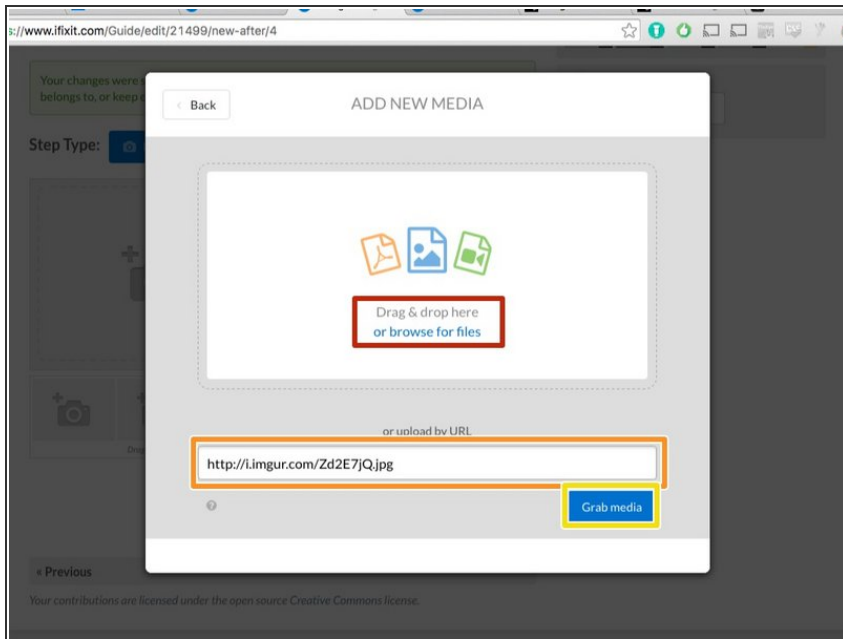
This is a "quick and dirty" guide on how to add images to existing questions or answers.

## Step 1 — Adding images to an existing question



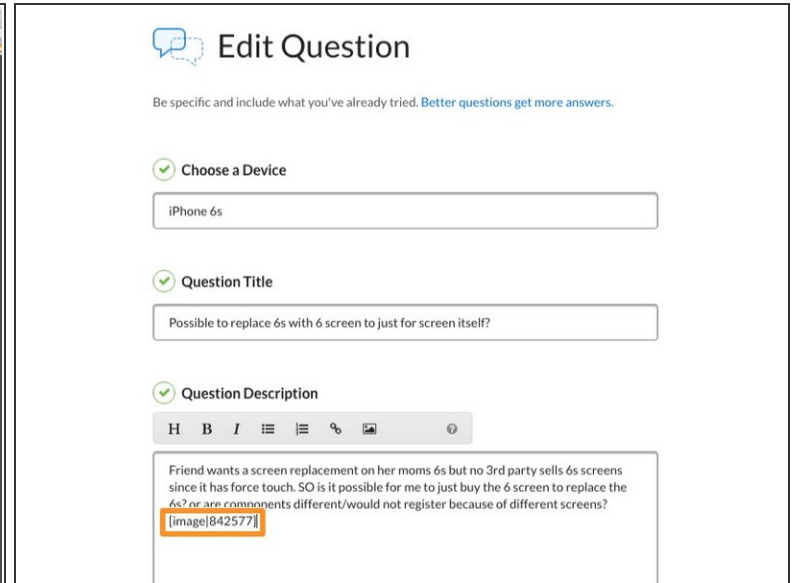
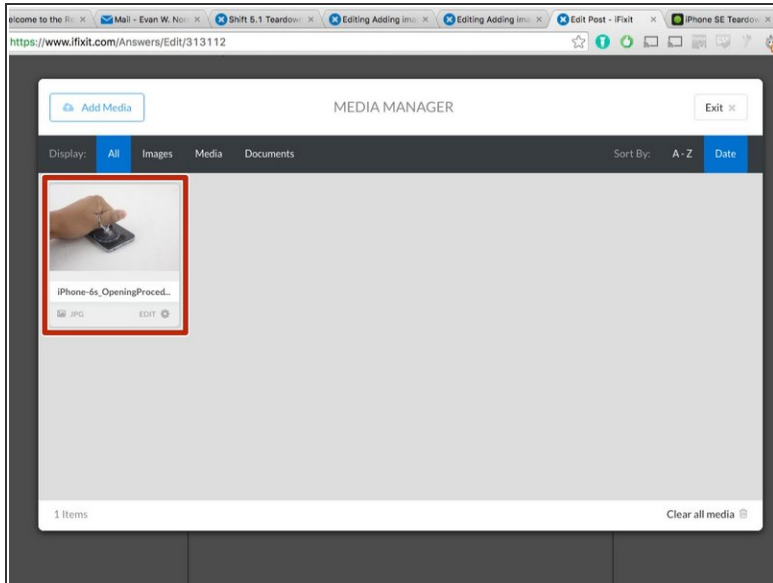
- Mouse-over **Options** on the top right corner of the Question field to reveal a dropdown menu.
- Click on **Edit** to open the Edit Post page.
- Before adding your image, position the cursor at the place in your text where you want to add the image. We suggest placing it at the end of the question.
- Click on the image icon to open the Media Manager.
- Click on **Add Media** and select files from your computer to upload.
- ① Alternatively, you can simply drag and drop images into the Media Manager to upload them. **If you did this, proceed directly to step 3.**

## Step 2



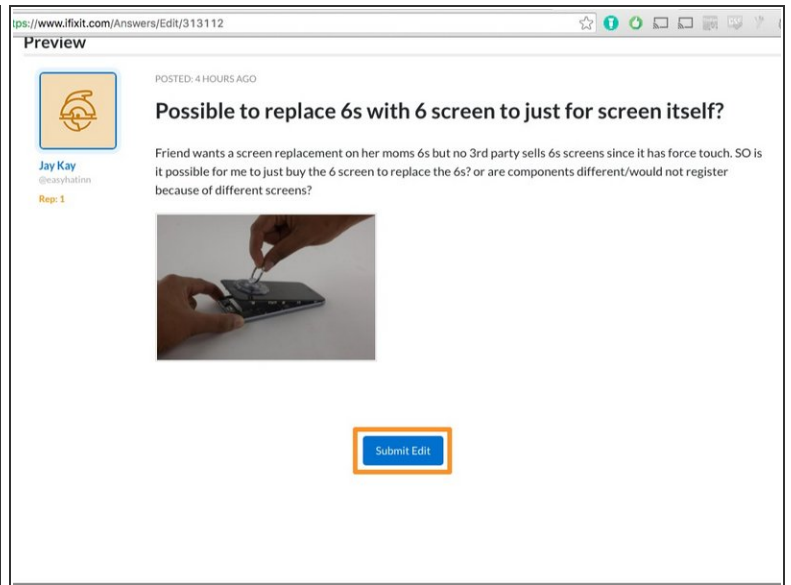
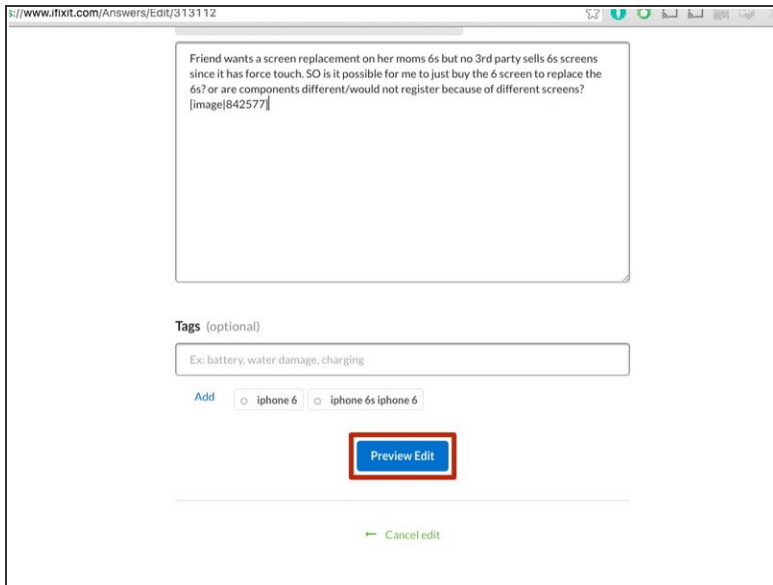
- In the Add Media window, you can add images from the internet or your local machine.
- To add images from your computer:
  - Click on the **browse for files** to find photos on your computer, or simply drag and drop them onto the window.
- To add images from the internet:
  - Get the link to your desired image. You can usually do this by right-clicking the image and selecting **Copy link address**.
  - Paste the link into the field provided.
  - Click **Grab Media** to add the image to your Media Manager.

## Step 3



- Once the image is in your Media Manager, click on it to insert into your question.
- The image should appear in-line at the spot where your cursor was positioned when you opened the Media Manager.

## Step 4



- After inserting the image, scroll to the bottom of the page and click **Preview Edit**.
- A preview will be automatically inserted below the fields for you to review.
- If everything looks good, click **Submit Edit**. If not, scroll back up and adjust your question as necessary.

The image size for insertion must be 800 x 600 pixels otherwise there will be an error message in the Media Manager. It looks complicated, but is actually straightforward.