



# Mercedes W123 Diesel Short Bypass Coolant Hose Replacement

It's often the small things that cause the most trouble. This is the case with the diesel W123 cooling system as well. One of the first hoses to leak is the short little hose that connects the thermostat to the water pump.

Written By: Nicolas Siemsen



## INTRODUCTION

How could 2" of anything cause much trouble on a car?

Well, if you're talking about the short coolant hose that connects the thermostat housing to the water pump, it definitely can!

In fact, it's often one of the first things to leak on your cooling system. Maybe it's because it's so short there isn't much room for failure. Whatever the case, if it's leaking it's time to replace it. It's pretty critical, after all. It carries all of the coolant that flows through the engine when the thermostat is closed during the warm up process.

As always when dealing with automotive fluids you should wear the proper protective gear, such as gloves and glasses. Also be sure to catch the fluid properly and dispose of it safely and in an environmentally sound way!

### TOOLS:

- [Phillips #1 Screwdriver](#) (1)

### PARTS:

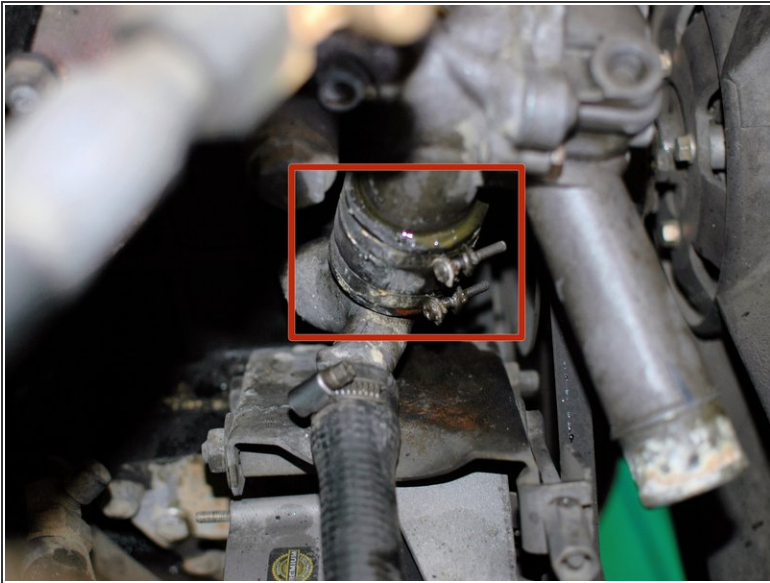
- [42mm Inner Diameter Cooling Hose](#) (1)  
*often sold in bulk lengths of about 1FT*
- [Utility Knife](#) (1)

## Step 1 — Short Bypass Coolant Hose



- **Required:** In order to remove your short cooling bypass hose you will first need to remove the thermostat housing. The thermostat housing gasket will need to be replaced, with fresh gasket sealant, at the end of this job. For guidance on removing the housing and replacing the gasket [invalid guide link]

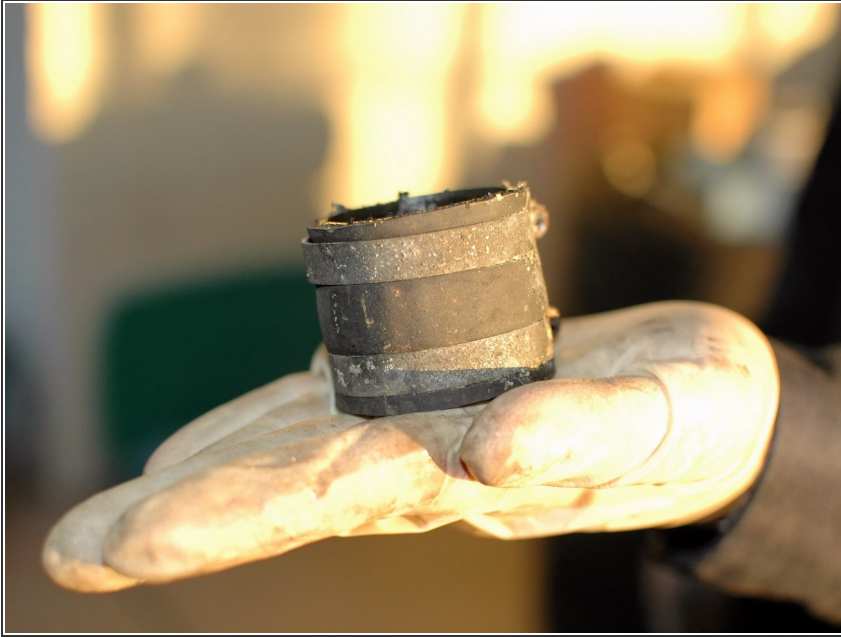
## Step 2



- This is the short coolant hose to be replaced. You can see it leaking in this picture. This is a typical failure.
- During the thermostat housing removal process you'll have already loosened the upper hose clamp on the short hose. Now loosen the lower clamp.
- With the lower clamp removed you'll be able to pull the short hose off the water pump inlet.
- Use a pair of pliers for grip if you need to, but it should pull off by hand.



### Step 3



- Here is the short hose off of the car.
- Measure its length, and then mark that length on the bulk hose you purchased.
- Use a utility knife or other appropriate cutting tool to cut the length of hose you need to replace the old short hose.
- Install the new hose, and then re-install the thermostat housing and gasket.

To reassemble your device, follow these instructions in reverse order.

This document was last generated on 2019-07-13 11:02:10 PM.