



Mercedes W123 Brake Line, Front Driver's Side Replacement

While they don't wear out, they can sometimes crack, or it's possible that the 11mm nut on the end of the line gets rounded off while replacing the soft rubber hoses. Learn to replace your front driver's side hard line with this guide.

Written By: Nicolas Siemsen



INTRODUCTION

The majority of your brake system is composed of hard metal lines that, just before reaching the calipers, connect with soft rubber hoses. Normally the hoses are what wear out and need to be replaced, but sometimes you'll have a need to replace the hard lines. They can rust out inside if brake fluid is not changed often enough, they can seize to the rubber hoses and the nuts can round off on the end, etc.

Please note that when working with brake fluid that it is extremely corrosive to paint. If it gets any painted part on your vehicle be sure to rinse it thoroughly.

As you proceed through this guide be sure to collect any fluids in a suitable drip pan and also to dispose of old fluids properly.

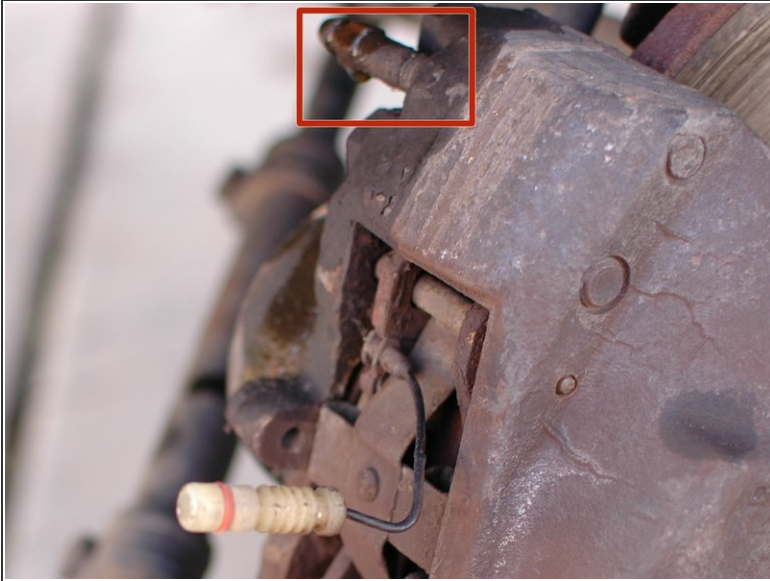
TOOLS:

- [11mm Wrench](#) (1)
- [14mm Wrench](#) (1)
- [Penetrating Lubricant](#) (1)
- [Drain Pan](#) (1)

PARTS:

- [W123 Front Driver's Side Hard Brake Line](#) (1)
part # 1234205728
- [Dot-4 Hydraulic Brake Fluid](#) (1)

Step 1 — Brake Line, Front Driver's Side



- Before you can begin you'll need to remove the front driver's wheel for easier access to the parts to be removed.
- Next you'll want to drain the brake fluid from the front driver's side caliper.
- Loosen the bleed screw on the caliper and allow the fluid to drain in to a pan.

Step 2 — accurate link to the referenced rubber brake hose guide



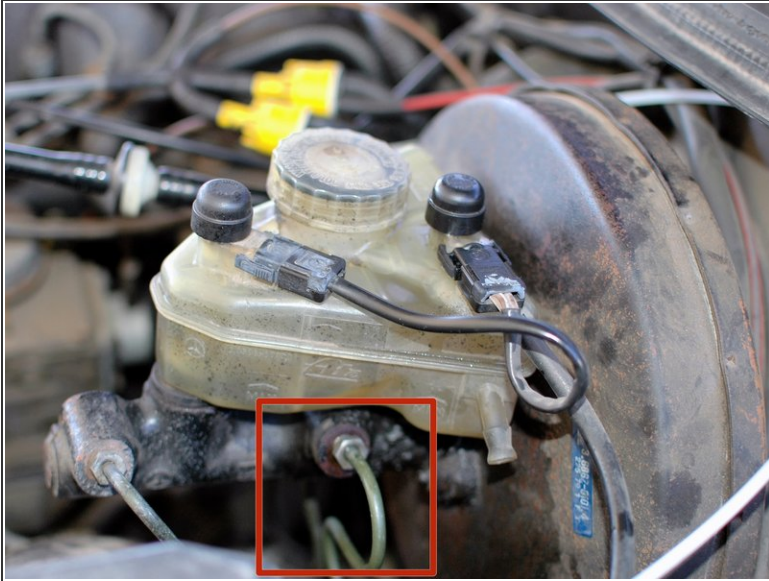
- Spray the connection of the hard brake line and the soft rubber brake hose with penetrating lubricant.
- This is a good time to consider also changing the soft rubber brake hose since it will already be halfway disconnected and the fluid drained. For more on this, and for more tips on disconnecting the hard lines from the rubber hose, [see the rubber brake hose replacement guide](#).

Step 3



- Place a 14mm line wrench or open end wrench on the soft rubber brake line. Use it to hold the soft rubber line to prevent it from twisting.
- Place a 11mm line wrench or open end wrench on the hard line nut. Use it to loosen this nut to back the connection out of the soft rubber line.

Step 4



- Under the hood, locate the connection for the driver's side front hard line on the master cylinder, just below the brake fluid reservoir. The line is the rear line on the driver's side of the master cylinder.
- Use an 11mm line wrench or open end wrench to loosen the nut on the hard line at the master cylinder.

Step 5



- The hard line on this side goes down through a rubber grommet in the fender.
- Pull the line up and out of this grommet.
- You can now begin to install the replacement brake line.
- Since you opened up the brake system to the air you will need to bleed the system before driving. Never drive a car after working on the brake lines without first bleeding it properly. [invalid guide link]

To reassemble your device, follow these instructions in reverse order.