



Lite FX Rotating Big Ball of Lite Model 1929 Switch Replacement

This guide will help you replace the switch on the cord of a Lite FX Rotating Big Ball of Lite Model 1929.

Written By: Courtney Elliott



INTRODUCTION

Will your groovy disco ball not turn on? This guide will teach you to remove and replace the switch so you can get back to your partying.



TOOLS:

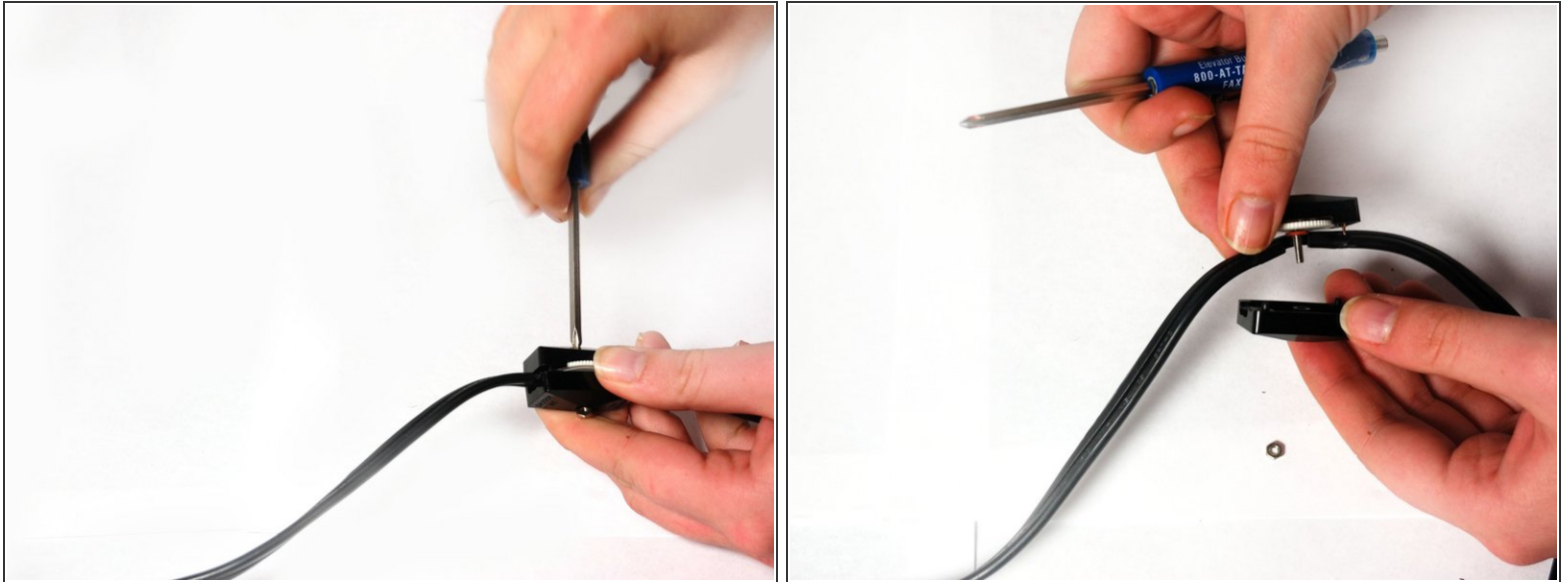
- [Phillips #1 Screwdriver](#) (1)





PARTS:

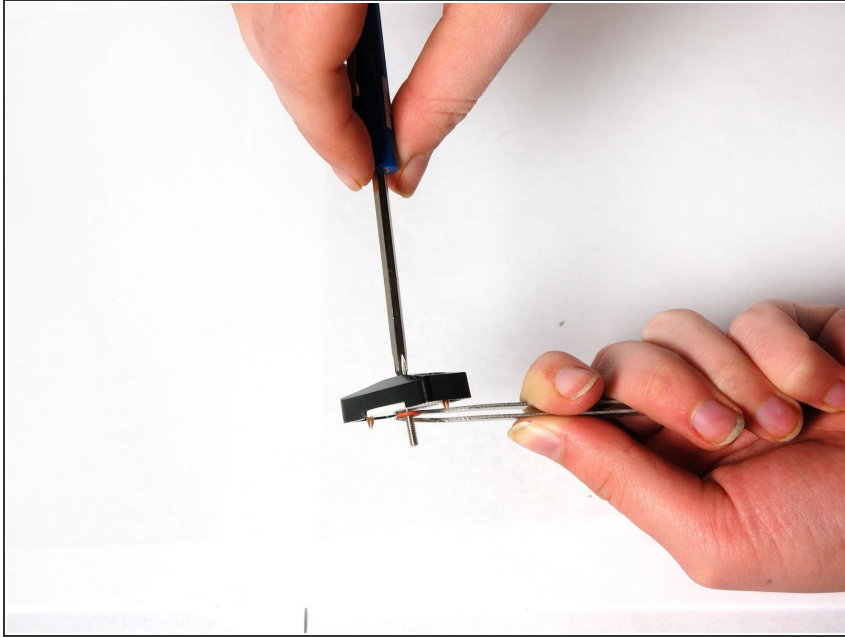
- [Zing Ear KS-30 Switch](#) (1)

Step 1 — Switch



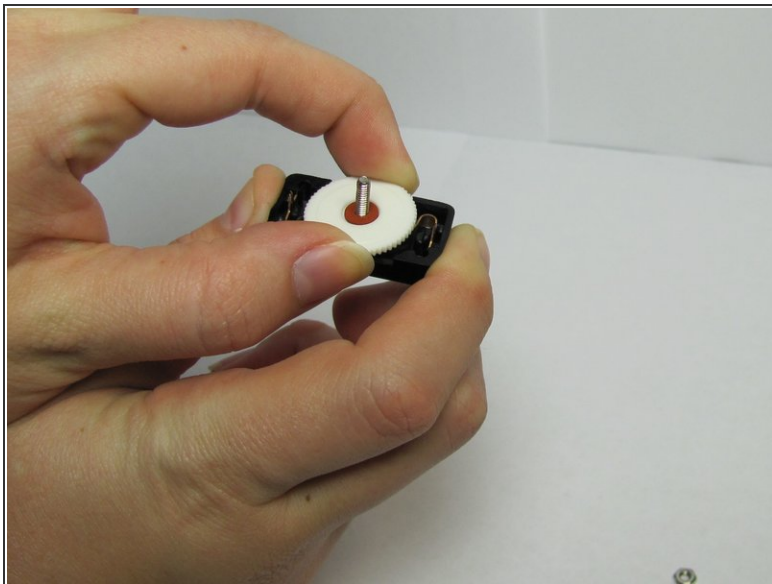
-  Unplug the device to avoid injury.
- Use a Phillips head screwdriver to unscrew the single screw.
-  Hold on to the nut from the other side so you do not lose it.
- Remove the panel that conceals the switch.

Step 2



- Hold on to the red disc with needle nosed pliers, and use the Phillips head screwdriver to remove the disc by pushing down.

Step 3



- Remove and replace the white switch.
 - ⓘ Do not be afraid to pull as this takes a bit of force to remove.

To reassemble your device, follow these instructions in reverse order.

This document was generated on 2019-09-22 12:32:31 PM (MST).

