



Conair Cord-Keeper 169XR On/Off Switch Replacement

This guide will show you how to disassemble the handle and replace the power button of your Conair Cord-Keeper 169XR.

Written By: Candace



INTRODUCTION

If your Conair Cord-Keeper 169XR dryer isn't turning on, the back of the On/Off button that engages the power may be broken.

TOOLS:

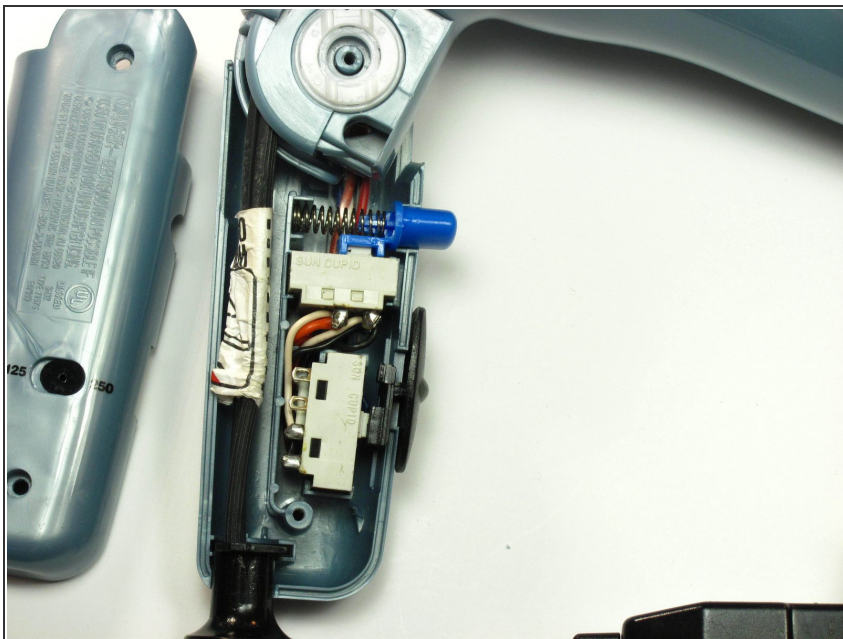
- [Phillips #2 Screwdriver](#) (1)
-

Step 1 — Handle



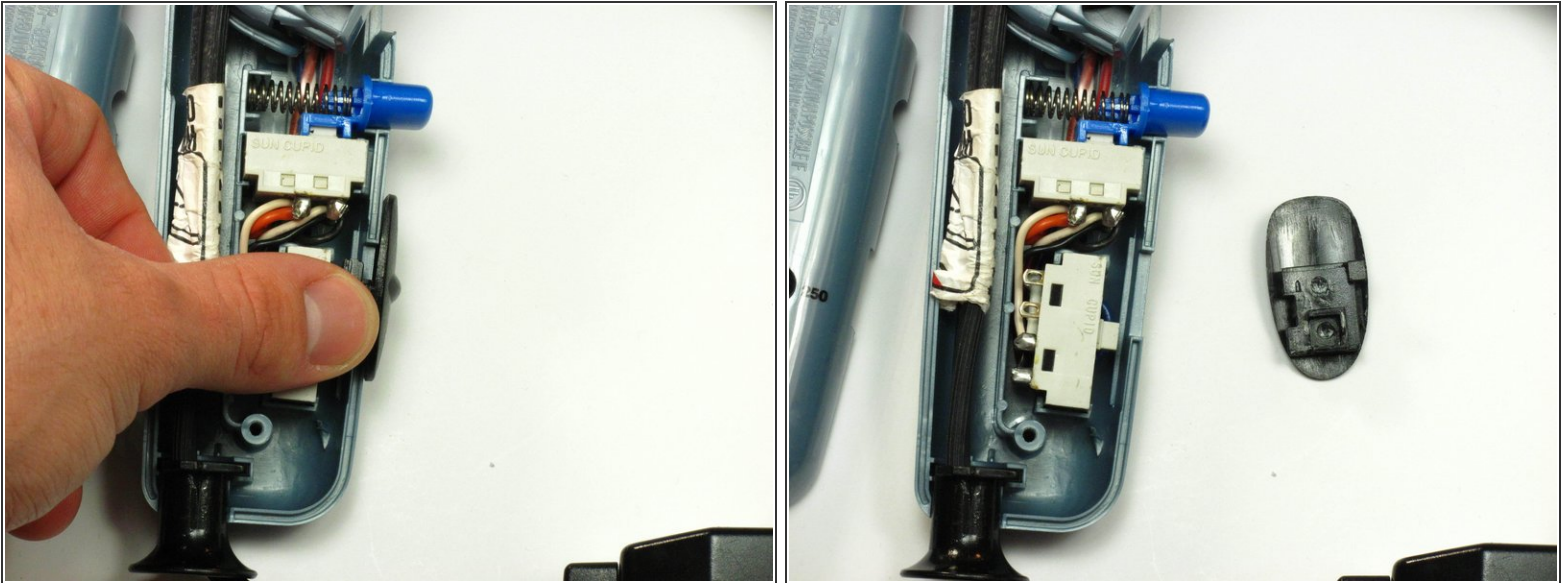
- Unscrew the two 18 mm long Phillips #2 screws on the side of the hair dryer.

Step 2



- ⚠ Some pieces may fall out when removing the face of the handle.
- Once you have taken the screws out, take the top half of the handle off by lifting it off of the dryer.

Step 3 — On/Off Switch



- Now take out the On/Off switch by gently pulling it out towards you and lightly pushing it to the right with your finger until it comes out of the groove it is resting in.
- Once the new switch is in place you can put the dryer back together.

To reassemble your device, follow these instructions in reverse order.