



# Conair Cord-Keeper 169XR Handle Disassembly

This is a prerequisite guide for the On/Off and Cool Down Button Replacements.

Written By: Candace



## INTRODUCTION

You will look at this short guide to get to a place where you can replace the On/Off Switch or Cool Down Button.

---

### TOOLS:

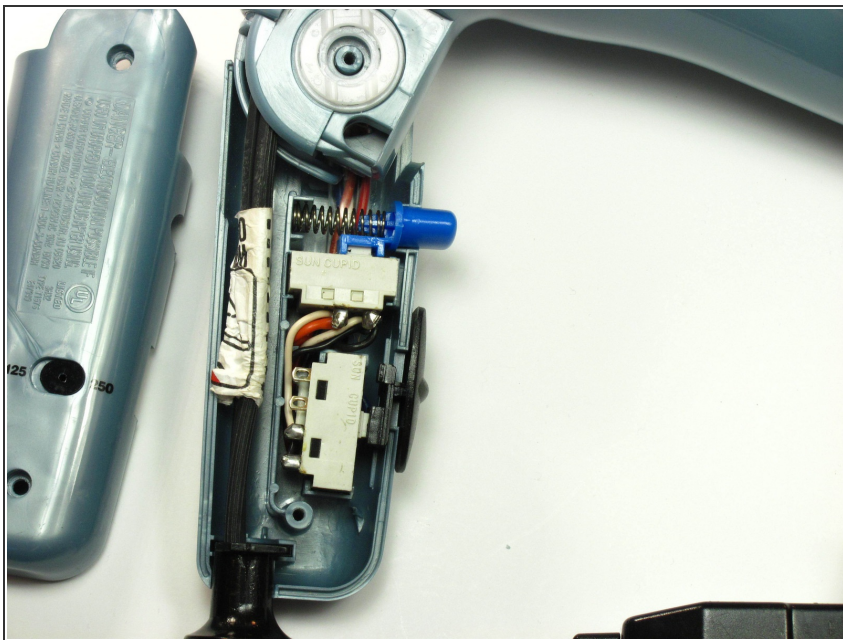
- [Phillips #2 Screwdriver](#) (1)
-


## Step 1 — Handle



- Unscrew the two 18 mm long Phillips #2 screws on the side of the hair dryer.

## Step 2



 Some pieces may fall out when removing the face of the handle.

- Once you have taken the screws out, take the top half of the handle off by lifting it off of the dryer.

To reassemble your device, follow these instructions in reverse order.

