



# Brother PT-D200 Cutter Blade Replacement

This guide will give you step-by-step instructions on how to replace the cutter blade on your Brother PT-D200.

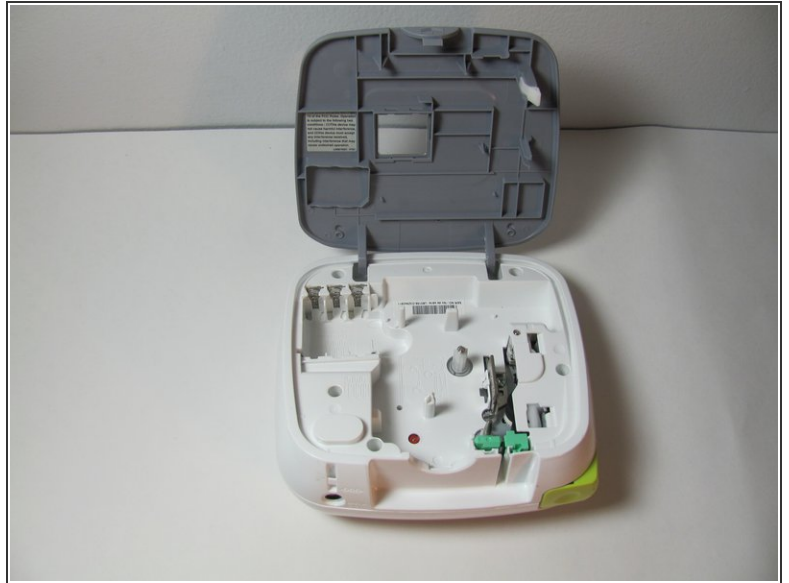
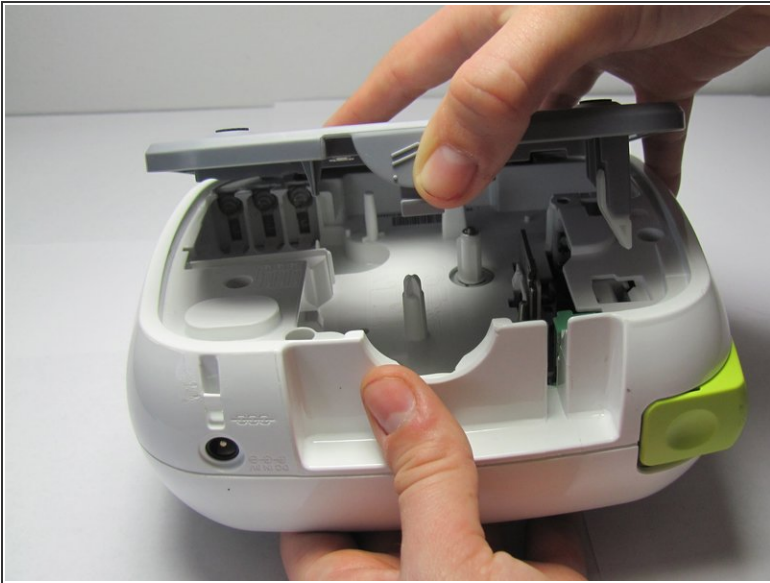
Written By: Blaire McCreary



## INTRODUCTION

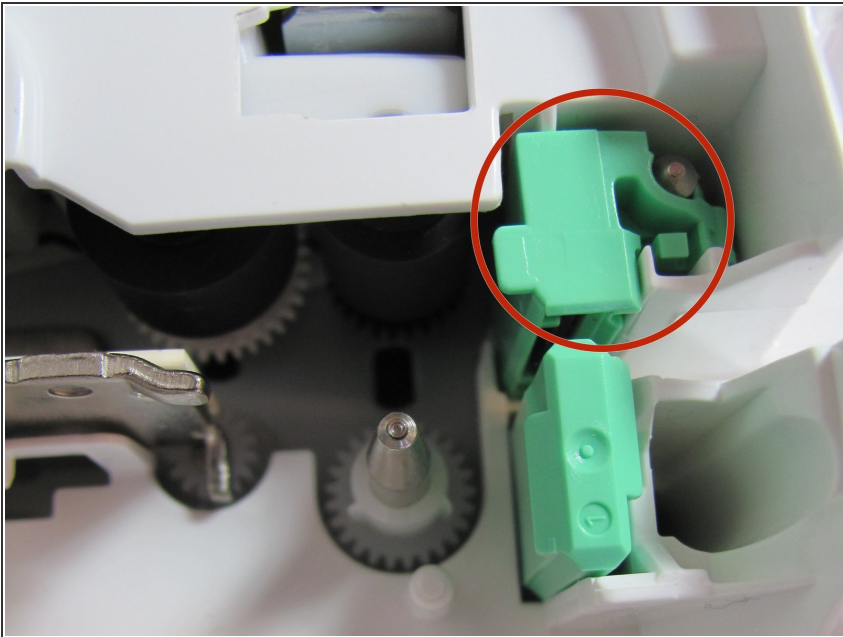
This guide will walk you through the process of replacing a dull or broken cutter blade on a Brother PT-D200.

## Step 1 — Cutter Blade



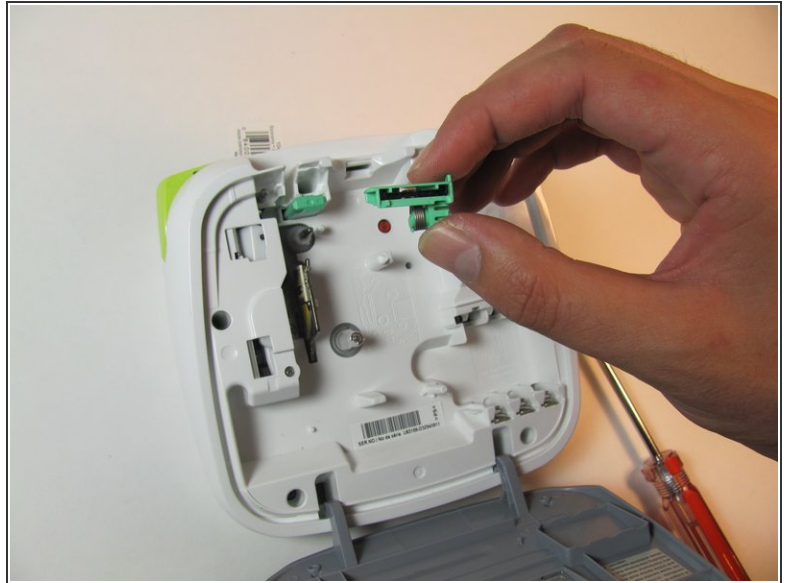
- Open the back panel of the device by pressing down on and then pulling the indication arrows on the top center of the cover upward towards you.

## Step 2



- Locate the cutter blade unit (mint green) as shown in the picture.

## Step 3



- Using the thumb and forefinger, pull up, applying a moderate amount of pressure until the cutter blade unit loosens and is removed.

 The blade is sharp.

To reassemble your device, follow these instructions in reverse order.

This document was last generated on 2019-07-18 06:43:34 PM.