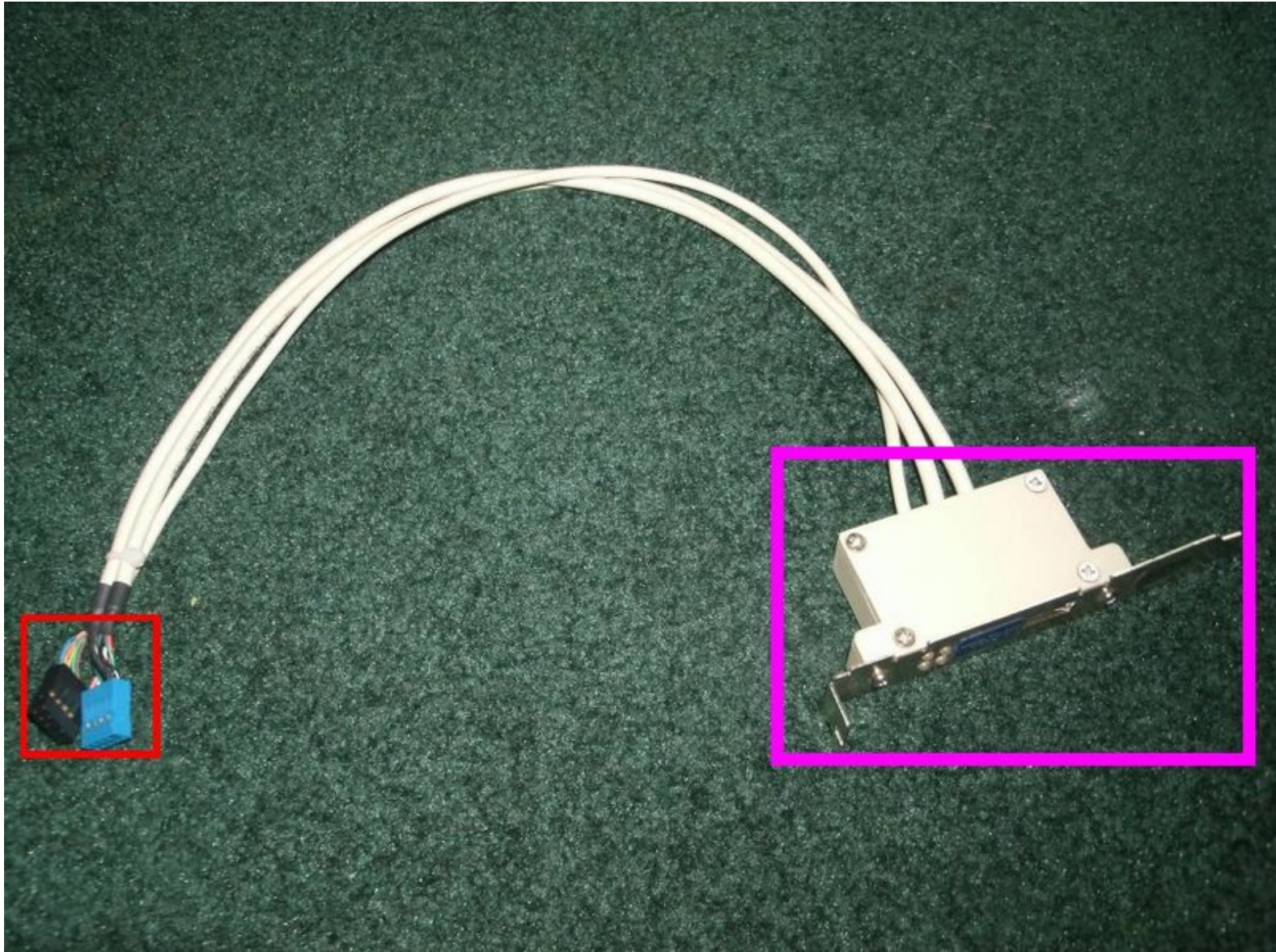




Dual USB Connector Teardown

Written By: samhnri



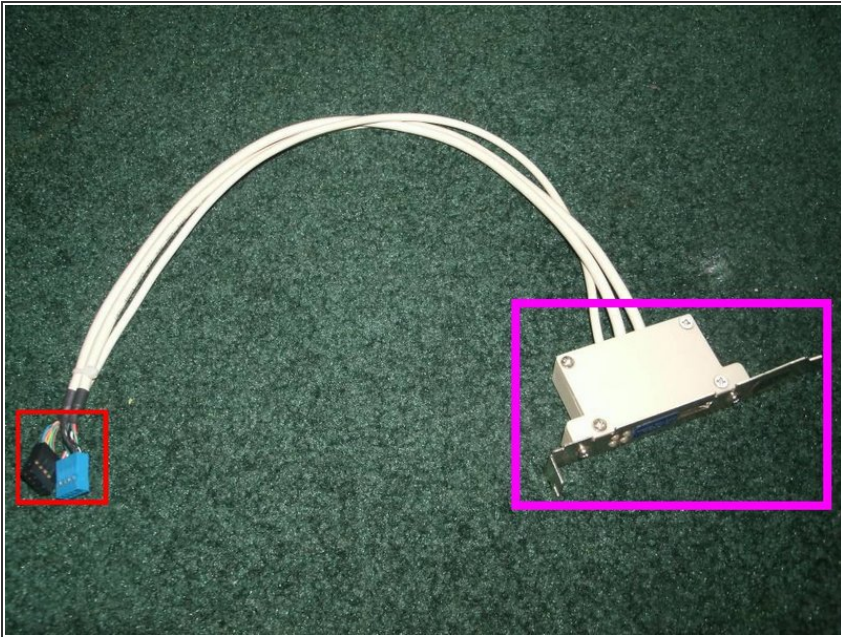
INTRODUCTION

This is a teardown of the USB and Bluetooth PCI card. We got the USB + Bluetooth - PCI at night of April 5, 2010. Updates? [Follow iFixit at twitter.](#)

TOOLS:

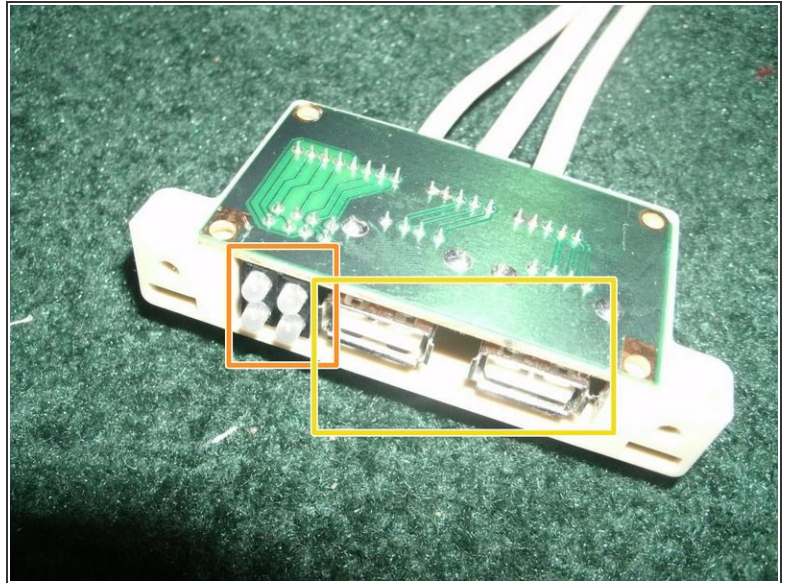
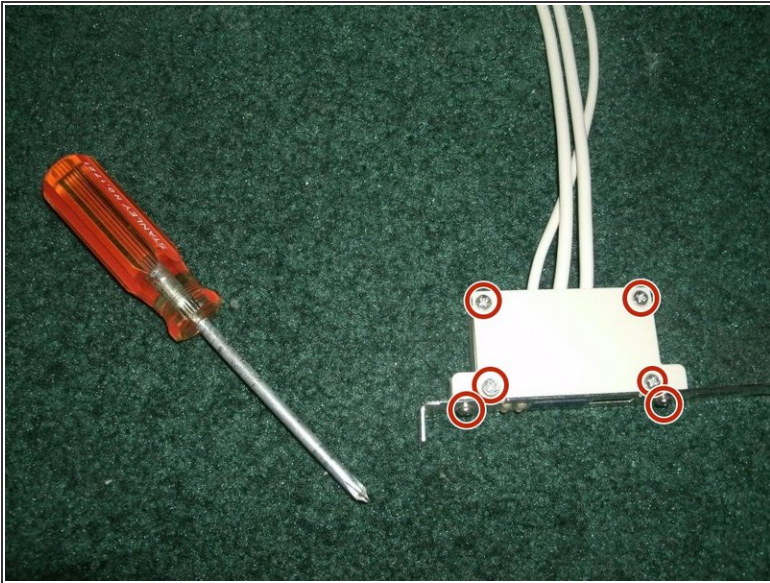
- [Phillips #1 Screwdriver](#) (1)
-

Step 1 — Dual USB Connector Teardown



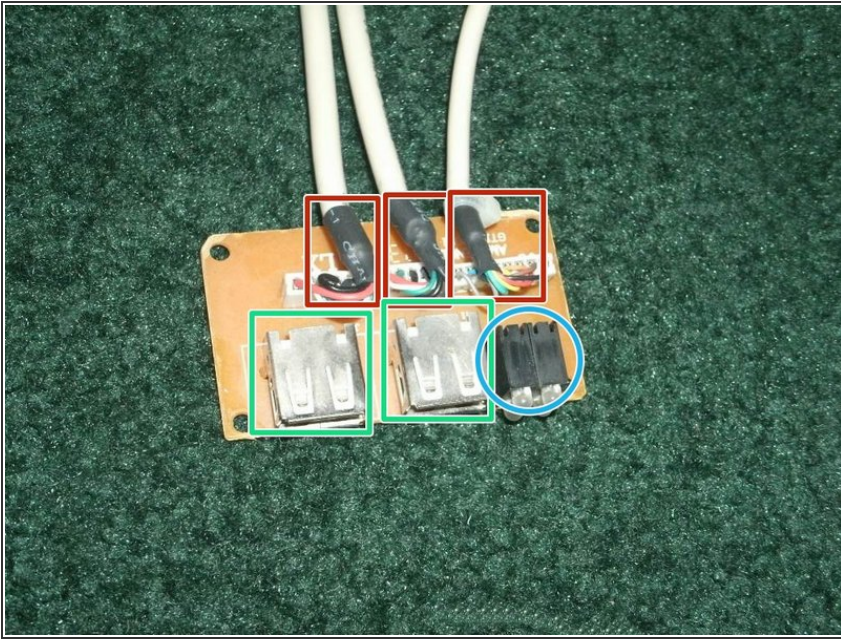
- The USB and Bluetooth PCI card.
- Connectors (black and blue).
- PCI card itself.

Step 2



- Use a [Phillips #1 screwdriver](#) to remove the four screws from the white casing and the two screws from the metal bar (and keep track of the location of these screws).
- ⚠ The solder on the bottom can cut skin!
 - The four LED lights. flash when usage.
 - The two USB ports are High Speed.

Step 3



- Raise the three connectors from the case and it's out!
 - Connectors 1, 2, and 3
 - USB ports 1 and 2
 - LED lights

To reassemble your device, follow these instructions in reverse order.