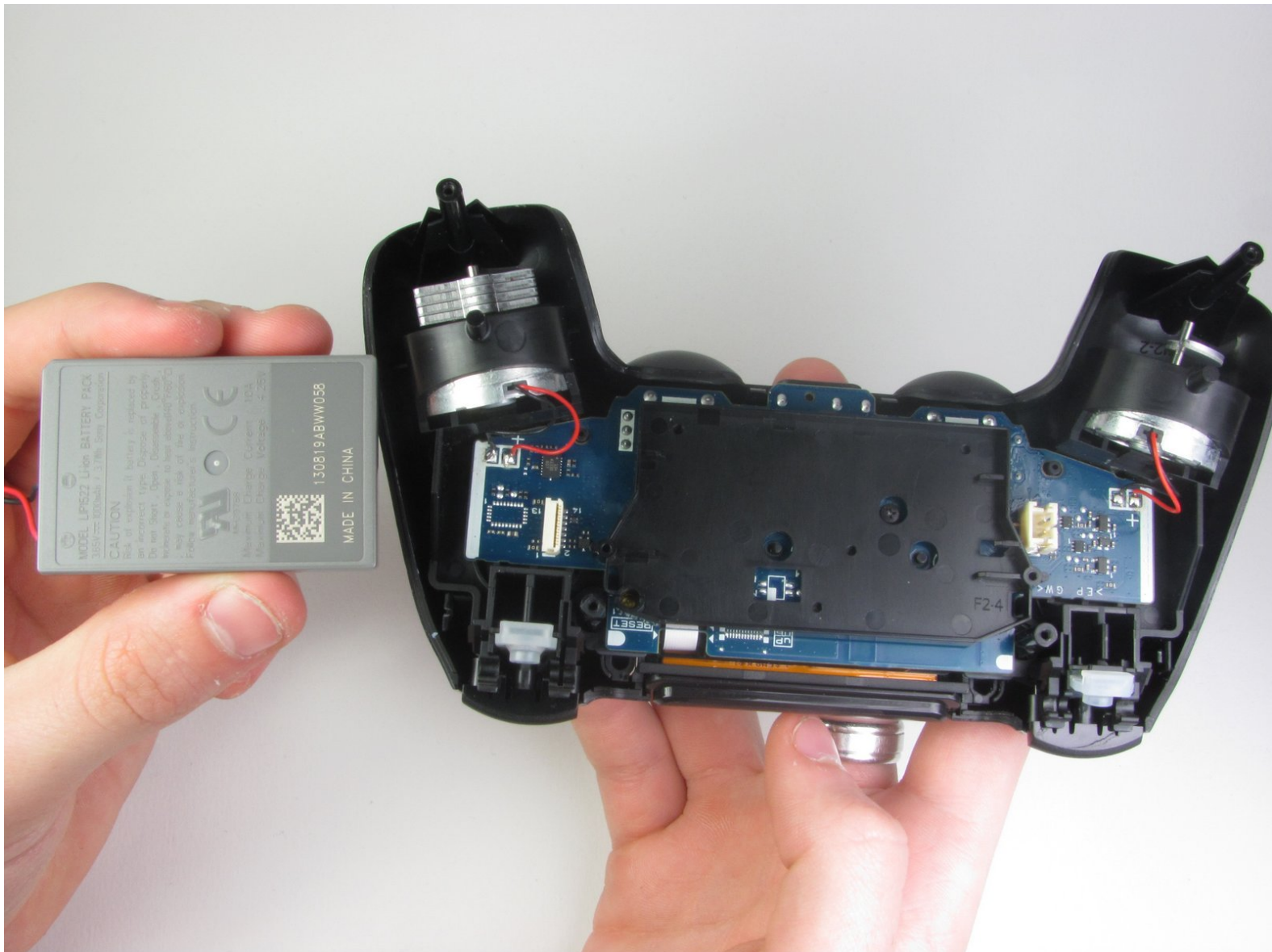




DualShock 4 Battery Replacement

Replace the battery in your DualShock 4.

Written By: Mark



INTRODUCTION

Use this guide to replace the 3.7 lithium-ion battery inside the DualShock 4.



TOOLS:

- [Essential Electronics Toolkit](#) (1)
- [iFixit Opening Tools](#) (1)
- [Phillips #00 Screwdriver](#) (1)



PARTS:

- [DualShock 4 \(JDM-030 and Earlier\) Controller Battery](#) (1)

Step 1 — Controller



- Using the Phillips #00 Screwdriver, remove the four 6.0 mm screws securing the rear cover to the controller.

⚠ Do not forcefully loosen the screws, as it will amount to permanent damage of the threads, making removal impossible.

Step 2



- Beginning with the **left handle**:
 - Pinch the left handle of the controller to introduce an opening.
 - Wedge a plastic opening tool into the opening and slide it up towards the joystick.
 - Pull down on the plier to crack open the casing.
- Repeat these steps for the **right handle**.

Step 3



- Wedge a plastic opening tool into the case-splittings and pull down to crack open the casing near the following buttons:
 - **Share** button
 - **Options** button
- Split the plastic covers of the controller apart, taking note that they will still be attached by circuit board ribbons.
- ⓘ Three small pieces are often released from the framework. To prevent loss, maintain a controlled work field.
 - 2 Trigger Springs
 - 1 Grey Reset Button Extension

Step 4 — Battery



- Detach the motherboard ribbon connecting the two sides of the controller by pulling it straight out with your fingers.
 - ☑ Note the orientation of the cable and make sure it faces the right way when you reconnect it.
- After the two halves are separated, place the top of the controller off to the side.

Step 5



- Using the blunt forceps, remove the battery plug by gently rocking the forceps side-by-side to loosen the plug.
 - After removal of the plug from the motherboard, the battery can be lifted off of the controller.
- ⚠ Hasty removal of the battery plug could warp the plastic grips of the plug.

To reassemble your device, follow these instructions in reverse order.

