



Canon EOS 300 Side Panel with Lever Replacement

Removing the side panel with the lever that locks the film door.

Written By: Jordan Tang



INTRODUCTION

This guide removes the side panel of the camera, allowing for repairs on the side lever.

TOOLS:

- [Phillips #00 Screwdriver](#) (1)
-

Step 1 — Batteries



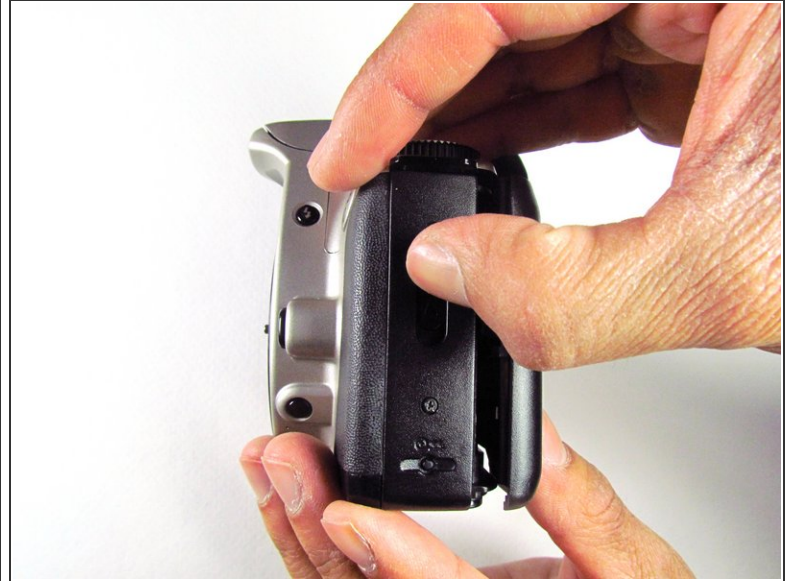
- Open up the battery door.

Step 2



- Remove the batteries from the camera by sliding them out into your palm.

Step 3 — Side Panel with Lever



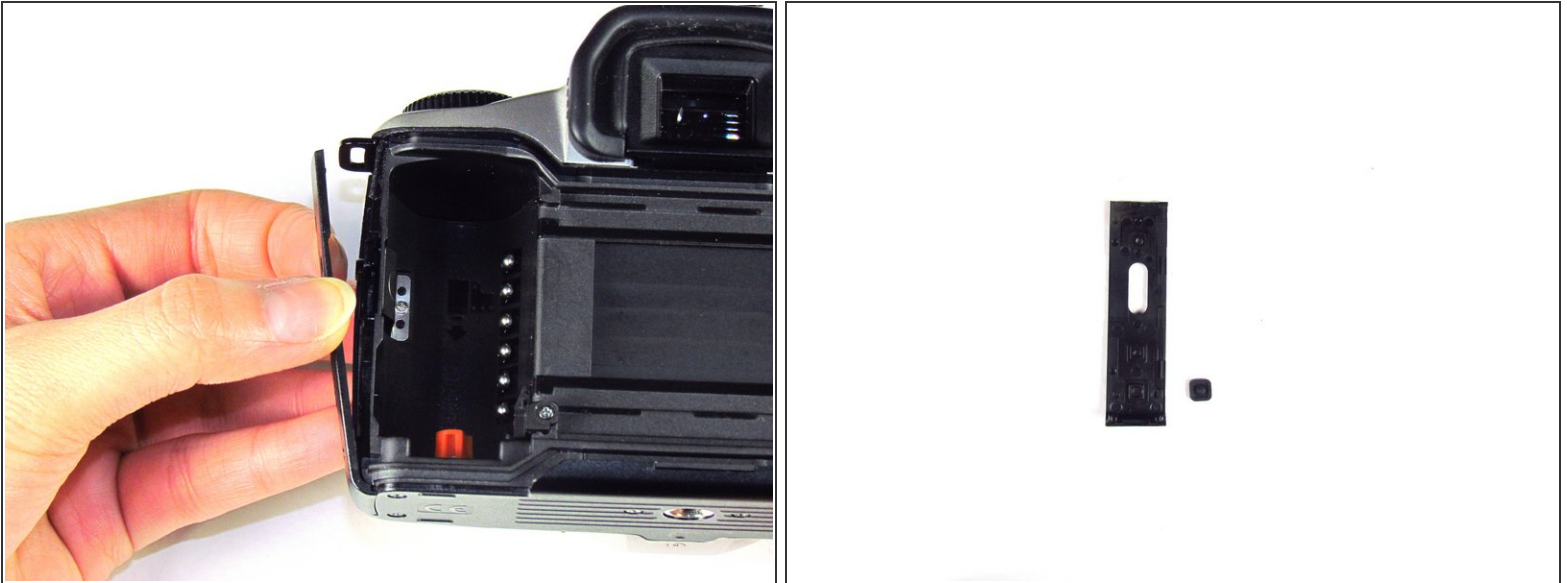
- Release the side latch to open the back panel.

Step 4



- Remove the two black 4.5mm screws above and below the latch.

Step 5



- Using your finger, carefully pry open the side panel from the top of camera.
- Pull panel downwards to remove.
- ⓘ Make sure to keep track of the small black piece of rubber under the latch.

To reassemble your device, follow these instructions in reverse order.