



iPhone 5s Front Facing Camera and Sensor Cable Assembly Replacement

Prerequisite to remove the front-facing camera/sensor cable assembly.

Written By: Sam Goldheart



INTRODUCTION

Use this guide to replace the sensor cable containing the front-facing camera, microphone, ambient sensors, and the earpiece speaker contact pad, in your iPhone 5s.

TOOLS:

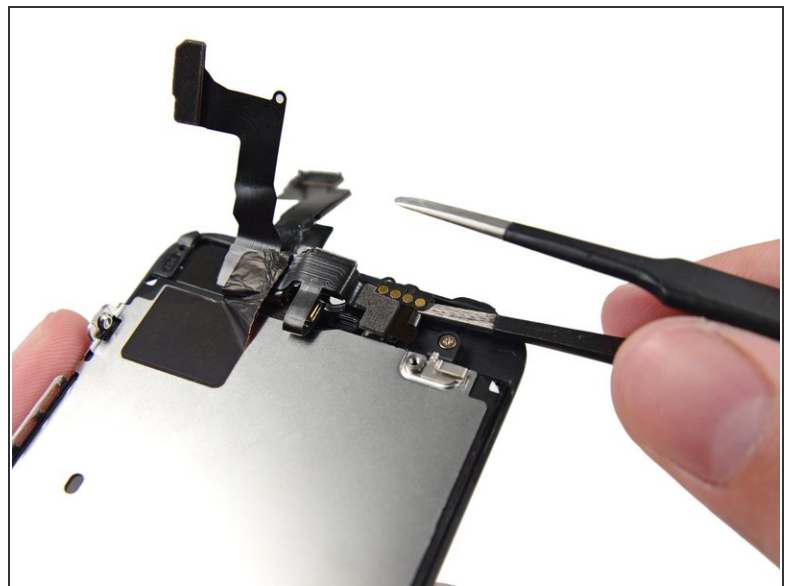
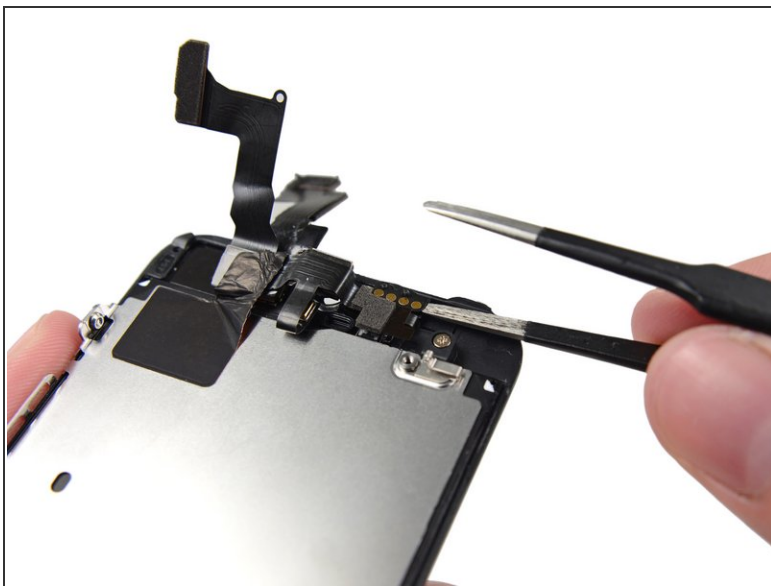
- [iOpener](#) (1)
 - [Spudger](#) (1)
 - [Tweezers](#) (1)
-

Step 1 — Front Facing Camera and Sensor Cable Assembly



- ⓘ This step requires removing the front facing camera and sensor cable from your front panel assembly.
- ⓘ The front facing camera and sensor cable is adhered to the display assembly with mild adhesive.
- Using an [iOpener](#) to soften the adhesive will help safely remove it. [Follow our iOpener instructions](#) to use it.

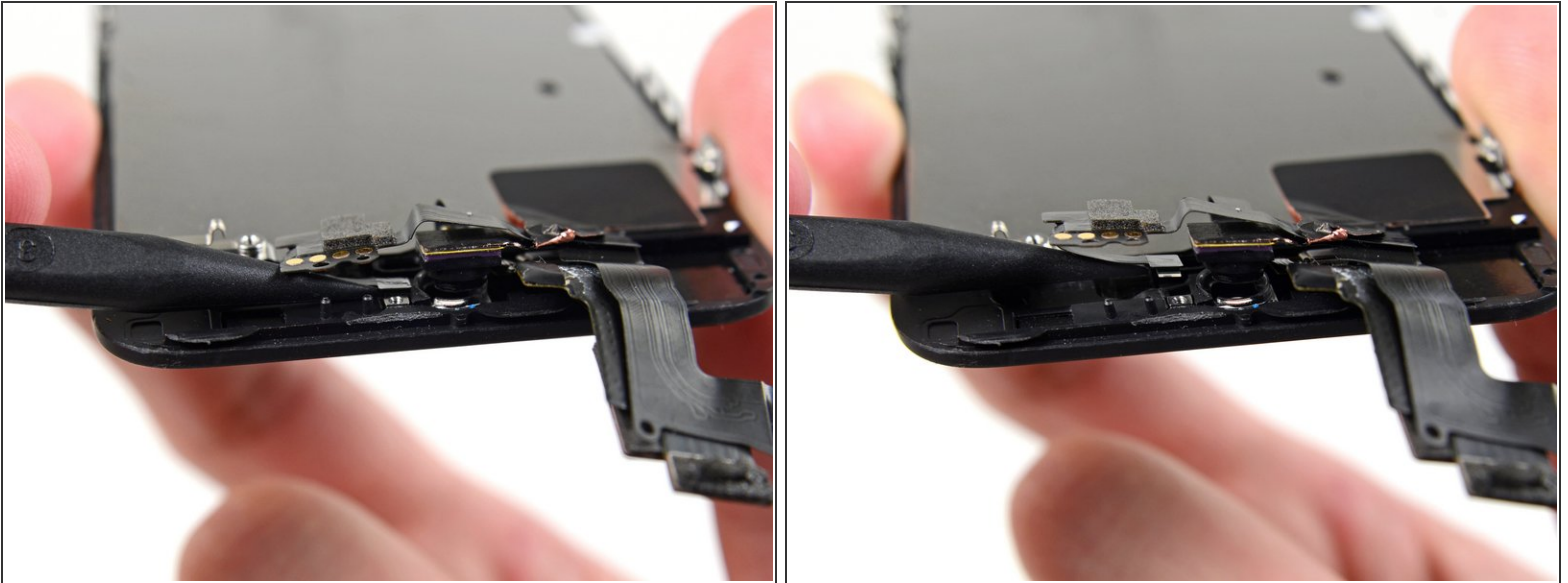
Step 2



- Using the edge of a set of tweezers or a metal spudger, gently pry the earpiece speaker contact cable up, to separate this portion of the camera and sensor cable from the adhesive below.

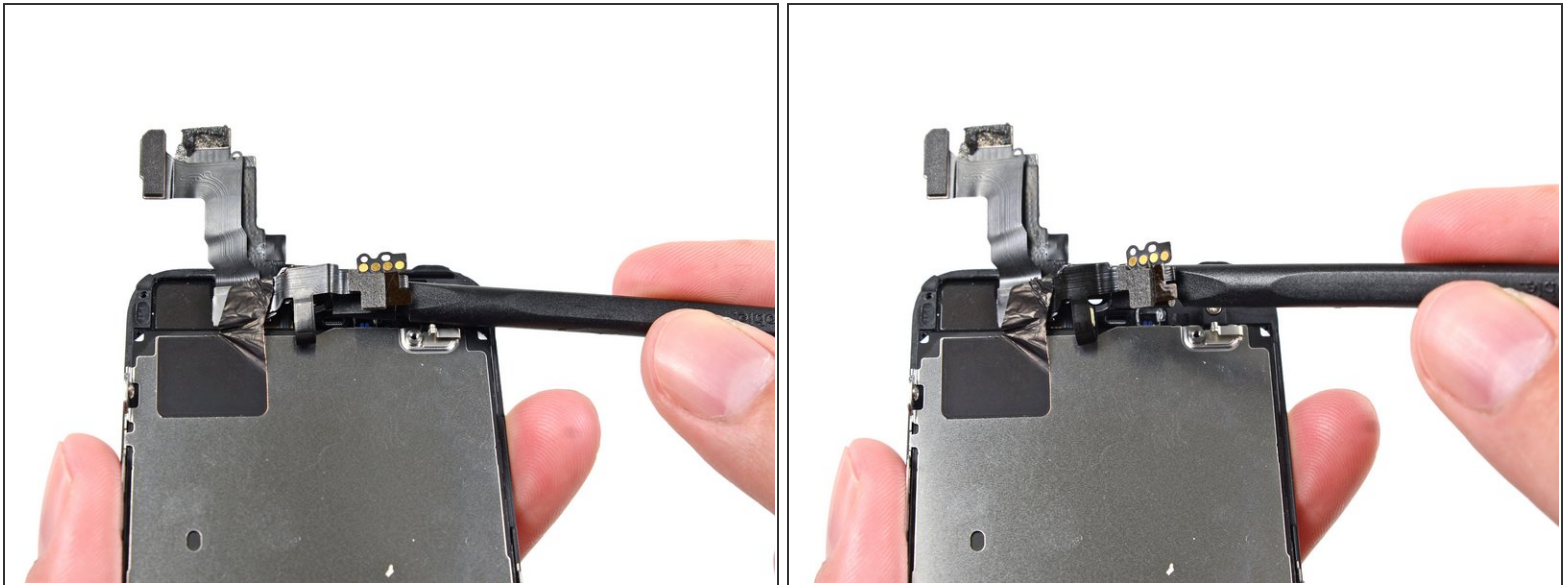
⚠ Only pry directly under the earpiece speaker contacts—there are sensors and microchips that can be damaged by prying elsewhere.

Step 3



- Use the point of a spudger to lift the ambient light sensor and proximity sensor out of their recess in the display assembly.
- ⓘ There is a small, square plastic and metal holder for the proximity sensor. This holder is essential for the proximity sensor to function correctly.
- ⓘ If replacing the proximity sensor make sure that the holder remains adhered to the back of the display. If it comes off with the old proximity sensor, remove it from the old sensor and use a tiny bit of adhesive to re-attach it to the back of the display.

Step 4



- Use the flat end of a spudger to gently peel the front-facing camera portion of the cable away from the display assembly.

Step 5



- ⓘ If you are reattaching the same shield plate to a new display, there is no need to peel the cable assembly off of the LCD shield plate. Skip this step.
- Carefully peel the cable assembly off of the LCD shield plate to remove it from the display.
- ⚠ Be careful not to grab the digitizer cable while peeling up the front facing camera and sensor assembly cable.

To reassemble your device, follow these instructions in reverse order.