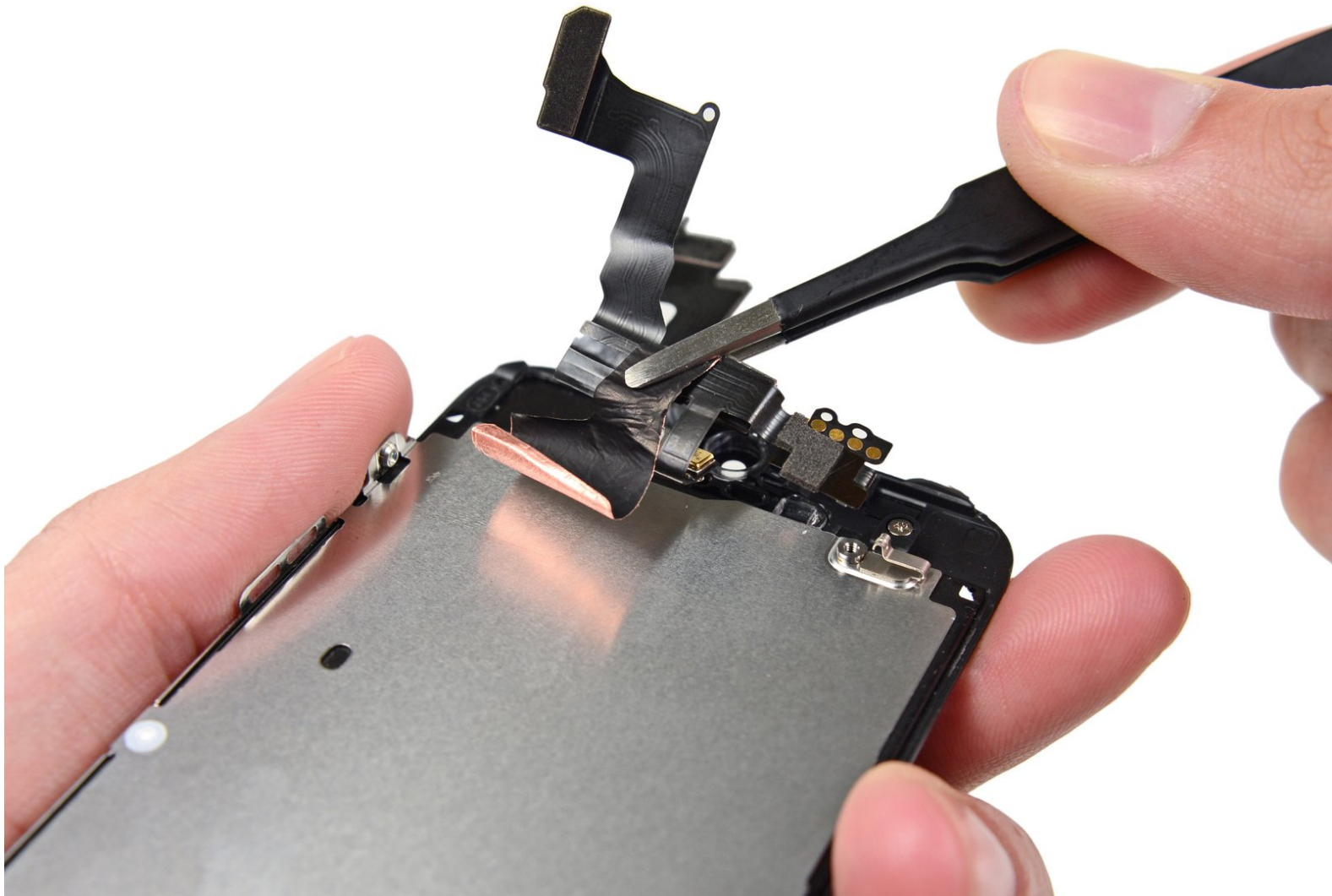




# iPhone 5s 前置摄像头和传感器电缆组件

前置摄像头和传感器电缆组件前提指南

撰写者: Sam Goldheart



## 介绍

使用本指南来更换传感器电线，包括iPhone 5s的前置摄像头、麦克风、传感器和耳机扬声器。

### 工具:

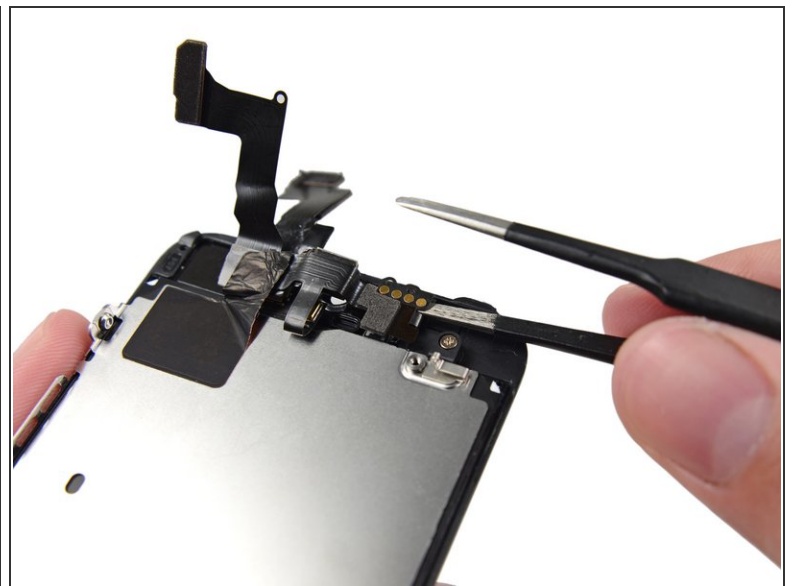
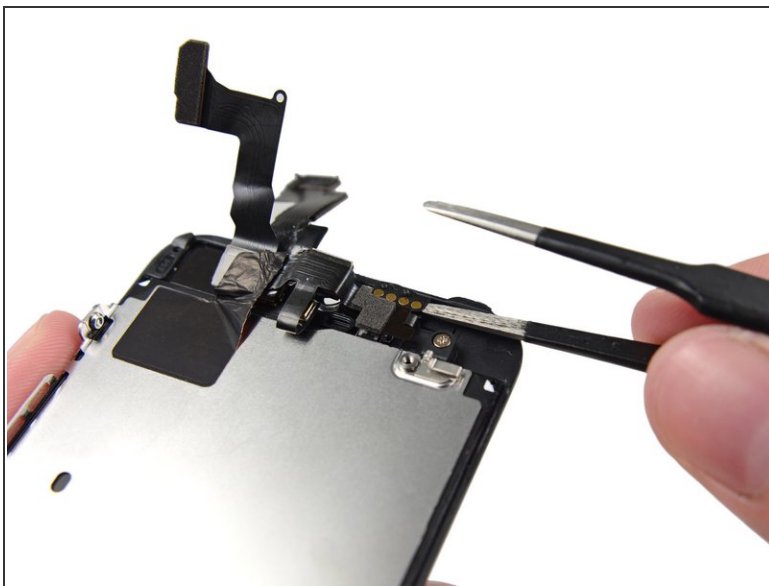
- [iOpener](#) (1)
- [Spudger](#) (1)
- [Tweezers](#) (1)

## 步骤 1 — 前置摄像头和传感器电缆组件



- ⓘ 本步骤要求从你的前面板组件，移除前置摄像头和感应排线。
- ⓘ 前置摄像头和感应排线被粘在了前面板上。
- 使用一个 [iOpener](#) 来软化胶带来安全移除。[我们的iOpener使用步骤](#) 可以教你用。

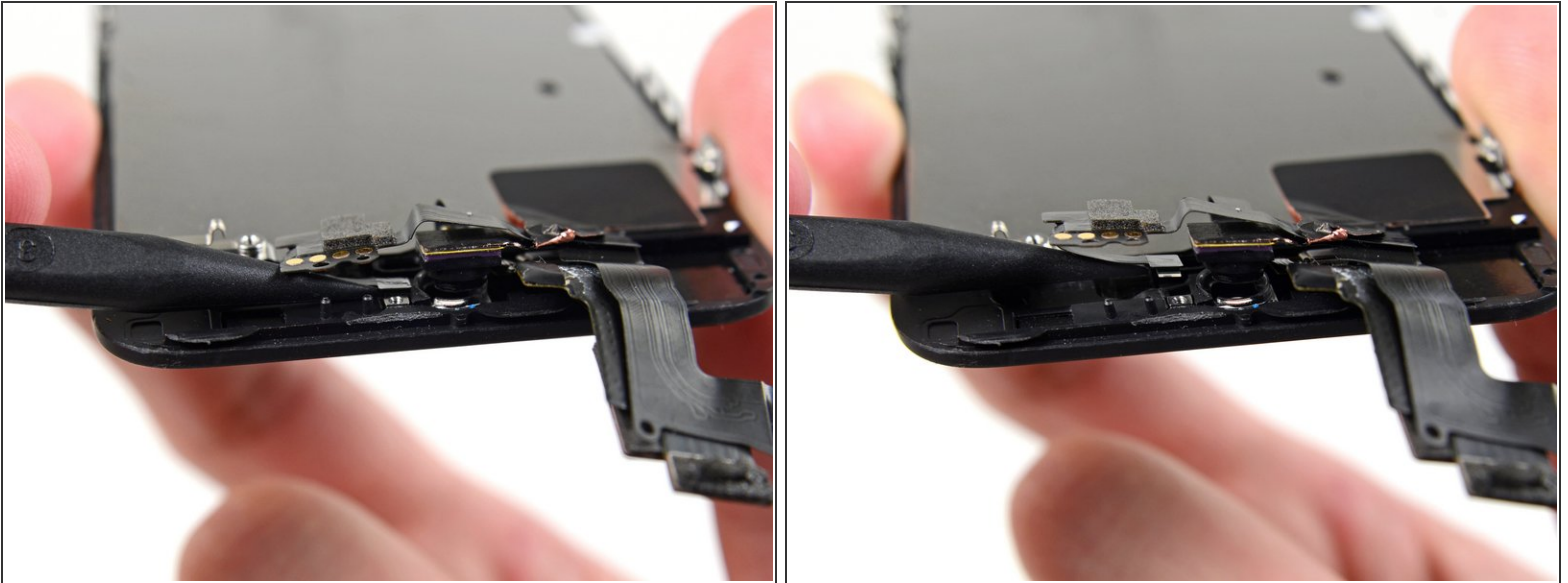
## 步骤 2



- 用镊子把粘在屏幕上的排线轻轻撬起。
- 用镊子把粘在屏幕上的前听筒排线轻轻撬起，让相机和感应排线与前面板分离。

**⚠ 注意，只要撬金属触点的下方位置，否则的话你很可能会弄坏边上的传感器和电路片。**

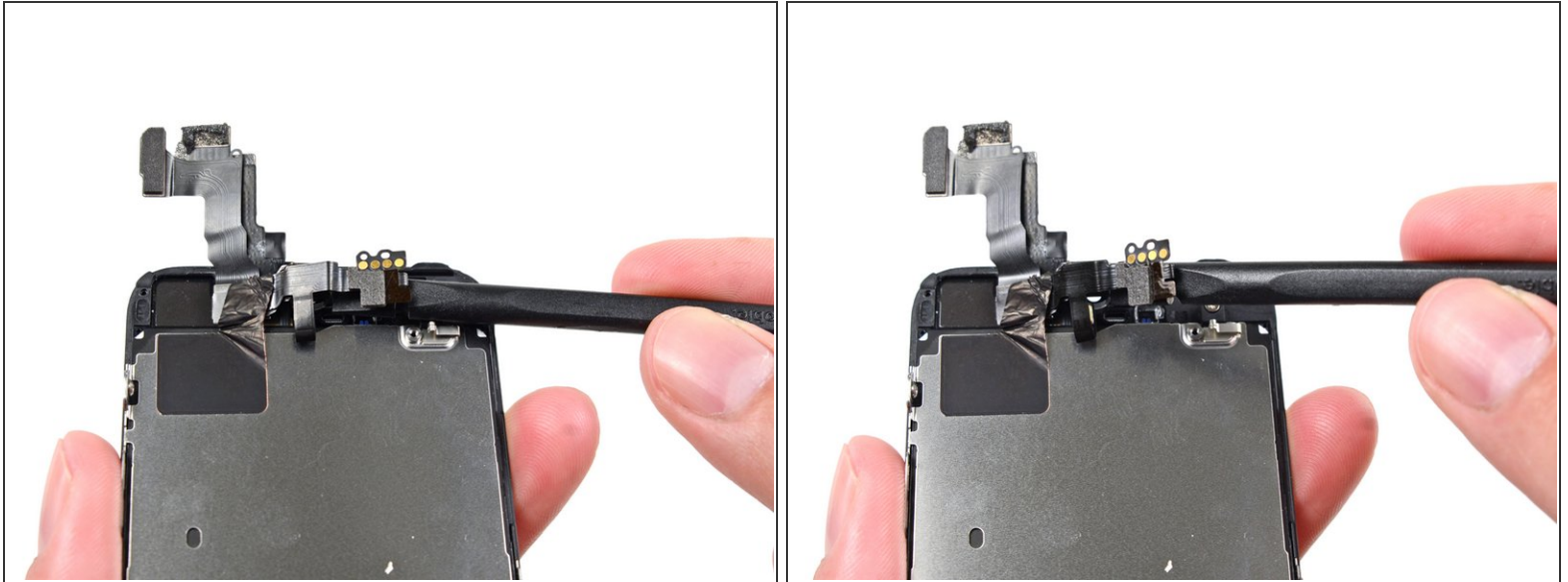
### 步骤 3



- 用小撬棒把感应器从卡槽撬起。
- Use the point of a spudger to lift the ambient light sensor and proximity sensor out of their recess in the display assembly.
- ⓘ There is a small, square plastic and metal holder for the proximity sensor. This holder is essential for the proximity sensor to function correctly.
- ⓘ If replacing the proximity sensor make sure that the holder remains adhered to the back of the display. If it comes off with the old proximity sensor, remove it from the old sensor and use a tiny bit of adhesive to re-attach it to the back of the display.



## 步骤 4



- 用平头塑料撬棒把前置摄像头撬起。
- Use the flat end of a spudger to gently peel the front-facing camera portion of the cable away from the display assembly.

## 步骤 5



- 小心翼翼的把排线从屏幕挡板上撕下。
- Carefully peel the cable assembly off of the LCD shield plate to remove it from the display.

**⚠** Be careful not to grab the digitizer cable while peeling up the front facing camera and sensor assembly cable.

请按照逆序来组装你拆开的设备。