



# PowerBook G4 Aluminum 15" 1-1.5 GHz RAM Replacement

Written By: iRobot



## INTRODUCTION

Accessing the RAM is easy and requires only a Phillips screwdriver.

### TOOLS:

- [Coin](#) (1)
- [Phillips #00 Screwdriver](#) (1)

### PARTS:

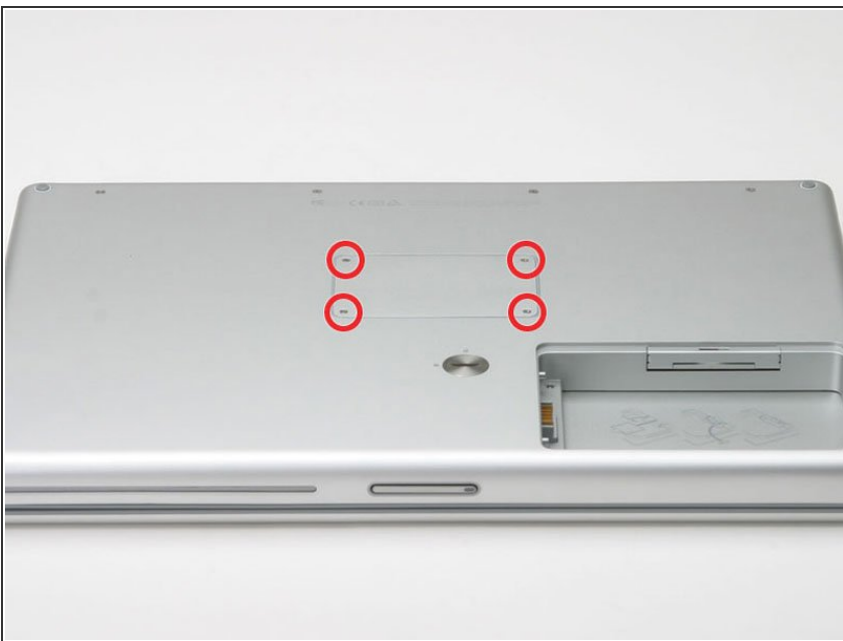
- [PC2700 512 MB RAM Chip](#) (1)
- [PC2700 1 GB RAM Chip](#) (1)
- [G4 Aluminum 15" 1 1.25 1.33 1.5 GHz Memory Door](#) (1)
- [PC2700 256 MB RAM Chip](#) (1)

## Step 1 — Battery



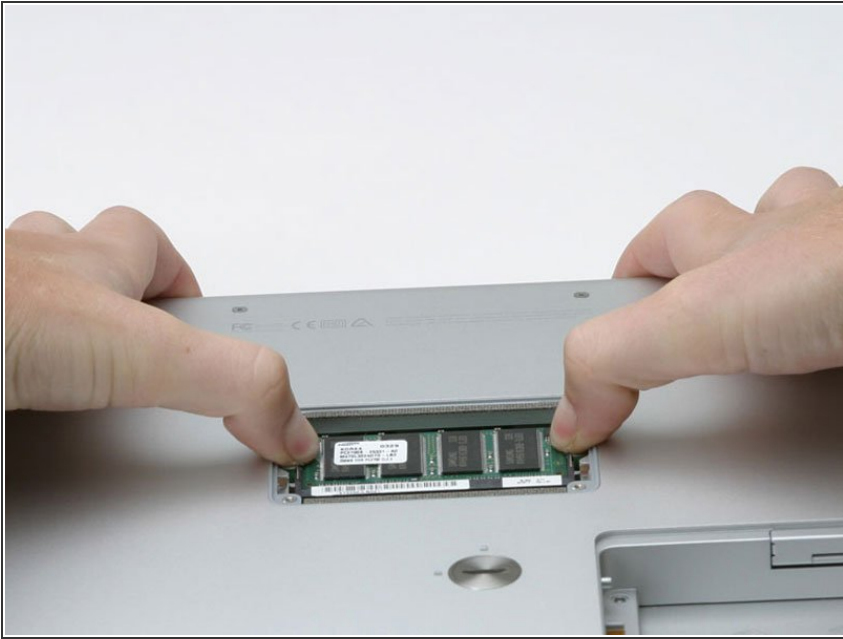
- Use a coin to turn the battery locking screw 90 degrees clockwise.
- Lift the battery out of the computer.

## Step 2 — RAM



- Remove the four Phillips screws from the memory door.
- Slide the memory door away from the memory compartment.

### Step 3



- Release the tabs on each side of the RAM chip at the same time. These tabs lock the chip in place and releasing them will cause the chip to "pop" up.
- Pull the chip directly out from its connectors. If there is a second RAM chip installed, pop it out in the same manner.

To reassemble your device, follow these instructions in reverse order.