



Sanyo CX 110 Teardown

Written By: samhnri



INTRODUCTION

We disassembled this calculator on April 17, 2010.

TOOLS:

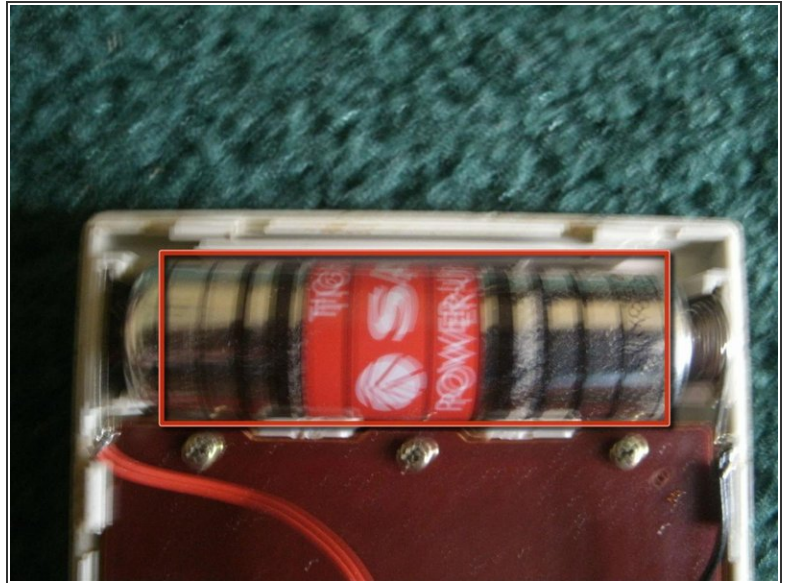
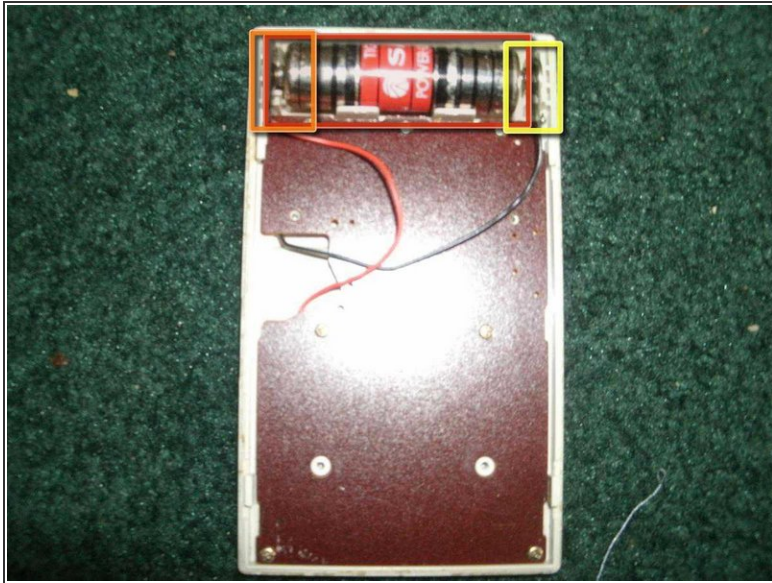
- [Phillips #0 Screwdriver](#) (1)
-

Step 1 — Sanyo CX 110 Teardown



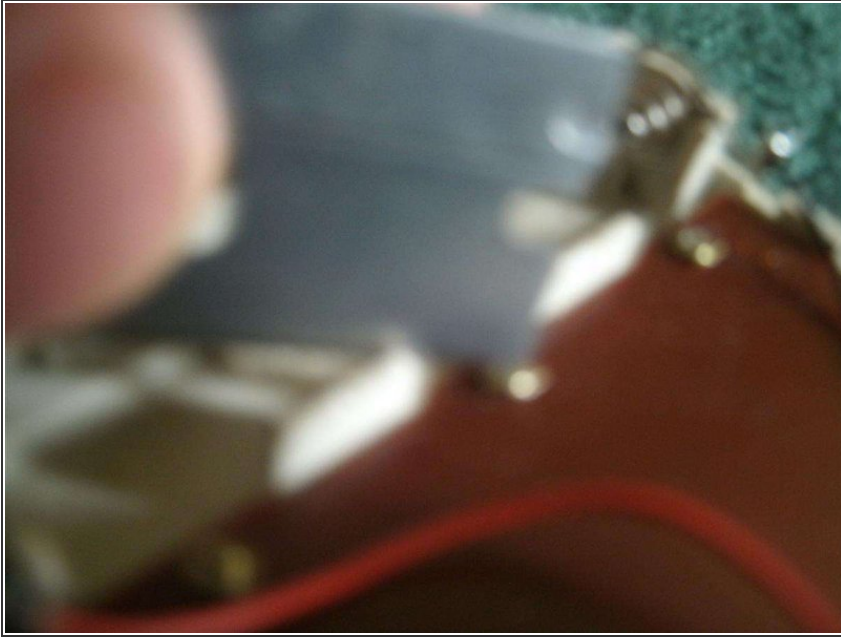
- Here is the Sanyo CX 110 calculator.
 - Remove these two screws from the back of the calculator using a [Phillips #0 Screwdriver](#).

Step 2



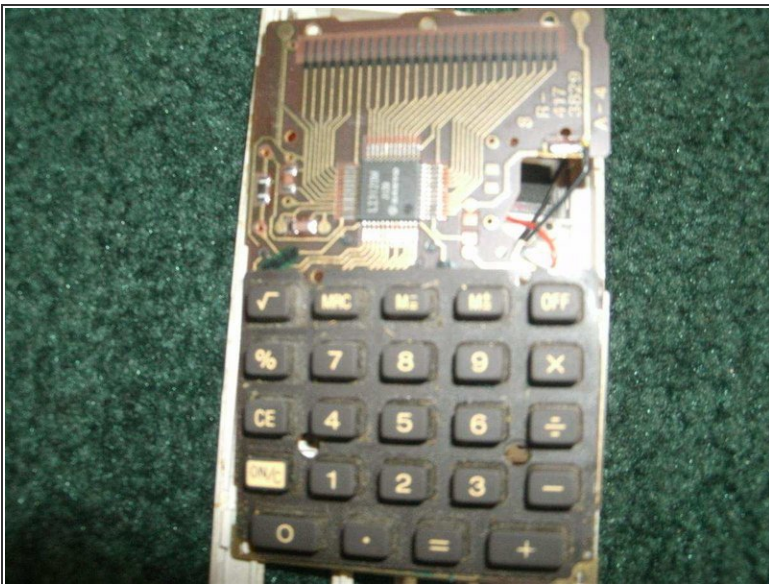
- Now that we removed the back of the calculator, here is the battery and the back of the logic board.
 - Sanyo Tight-Seal Power-Up Sum-3 1.5V AA battery.
 - Positive contact for the battery.
 - Negative contact for the battery.

Step 3



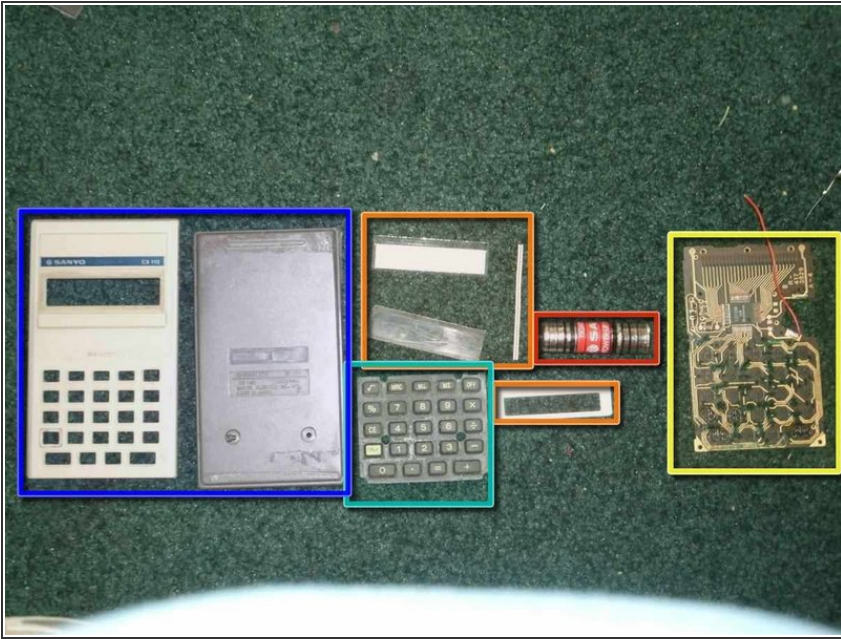
- Remove these 7 screws using a razor blade.
- ⚠ Be careful not to break the razor blade because it is fragile.
- Turn the circuit board 180 degrees after removing screws.

Step 4



- You will now see the circuit board and the buttons. Remove the buttons for the calculator.

Step 5



- Now we're all done! Just take the LCD apart and you are done completely!
- Sum-3 Sanyo Battery.
- LCD Screen Parts (darkener, inverter, LCD screen).
- Circuit Board for the calculator.
- Buttons for the calculator (square root, memory, percent, operators, numbers, etc.)
- Housing for the calculator.

To reassemble your device, follow these instructions in reverse order.