



# Imation Superdisk USB Drive Plastic Housing Replacement

This guide will show you how to remove the plastic housing shell of the Imation Superdisk USB Drive. Removing this shell will allow you to access the interior workings of the drive.

Written By: Caitlin Horwatt



 **TOOLS:**

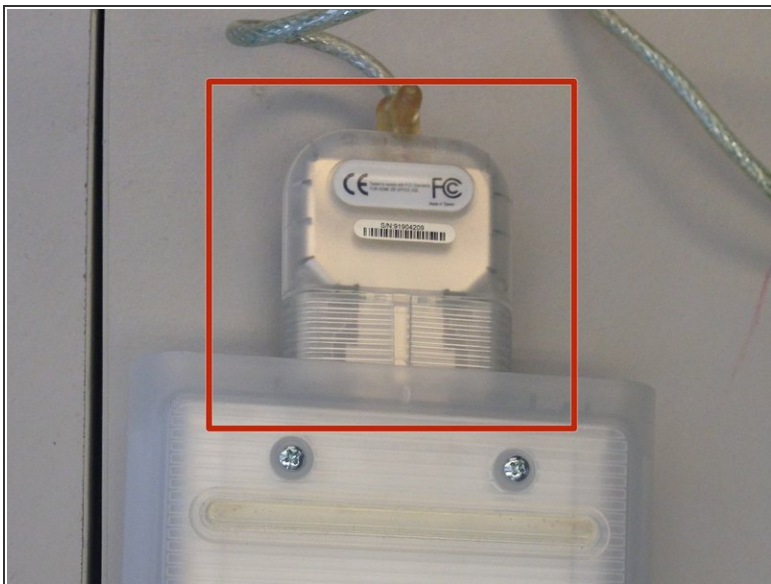
- Phillips #1 Screwdriver (1)
  - Fingers (1)
-

## Step 1 — Plastic Housing



- Flip the device over so the bottom is facing up.
- You will know it is the bottom because there will be six silver screws visible.

## Step 2



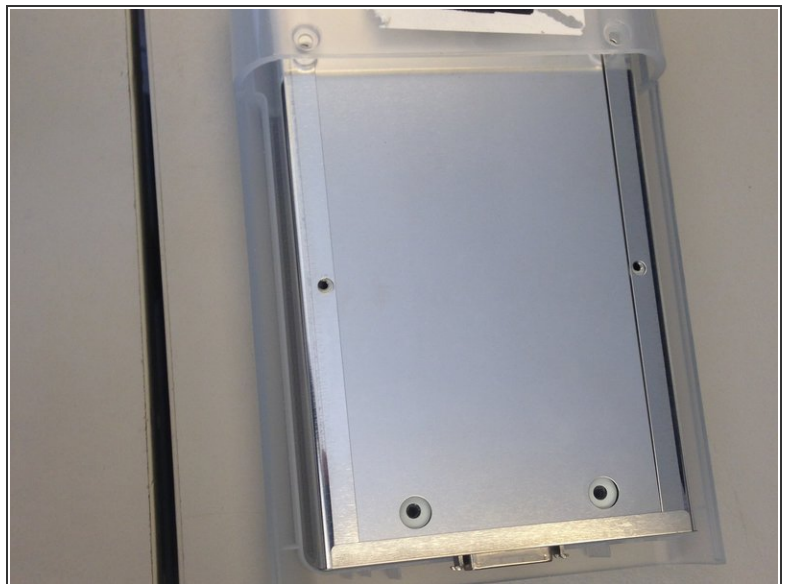
- Remove the USB converter device by gently pulling it out.
- ⚠ Do not pull the converter device out by the cord.

### Step 3



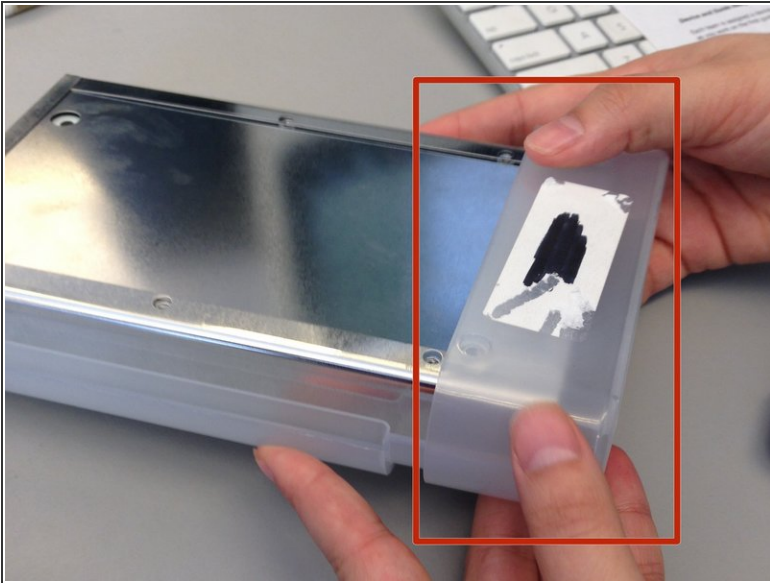
- Remove the six silver screws using a small Phillips head screwdriver.

### Step 4



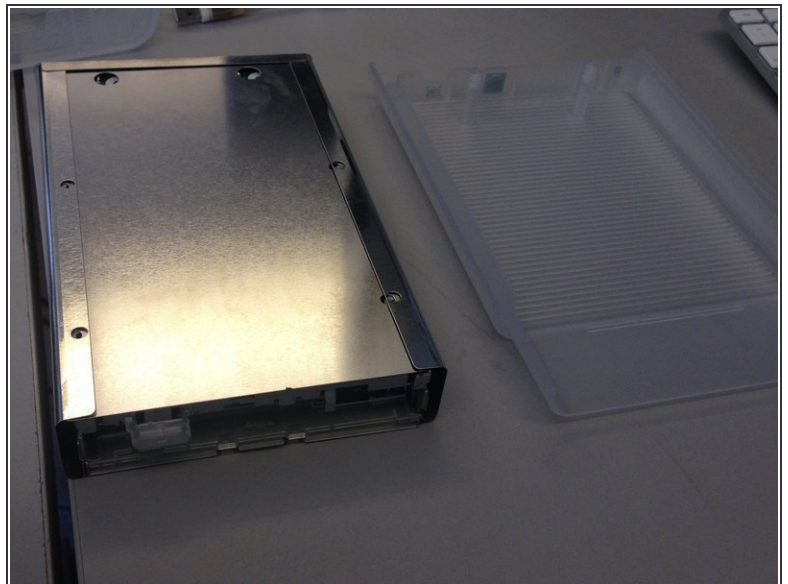
- Slide the bottom plastic panel of the shell down so it is free of the end cap and the top panel.
- Lift panel free of device.

## Step 5



- Remove the plastic end cap by sliding it forward, freeing from the rest of the device.
- You can identify the end cap by noting the label "SuperDisk Drive" above where you would insert a floppy disk.

## Step 6



- Slide the metal housing out of the plastic shell.

To reassemble your device, follow these instructions in reverse order.