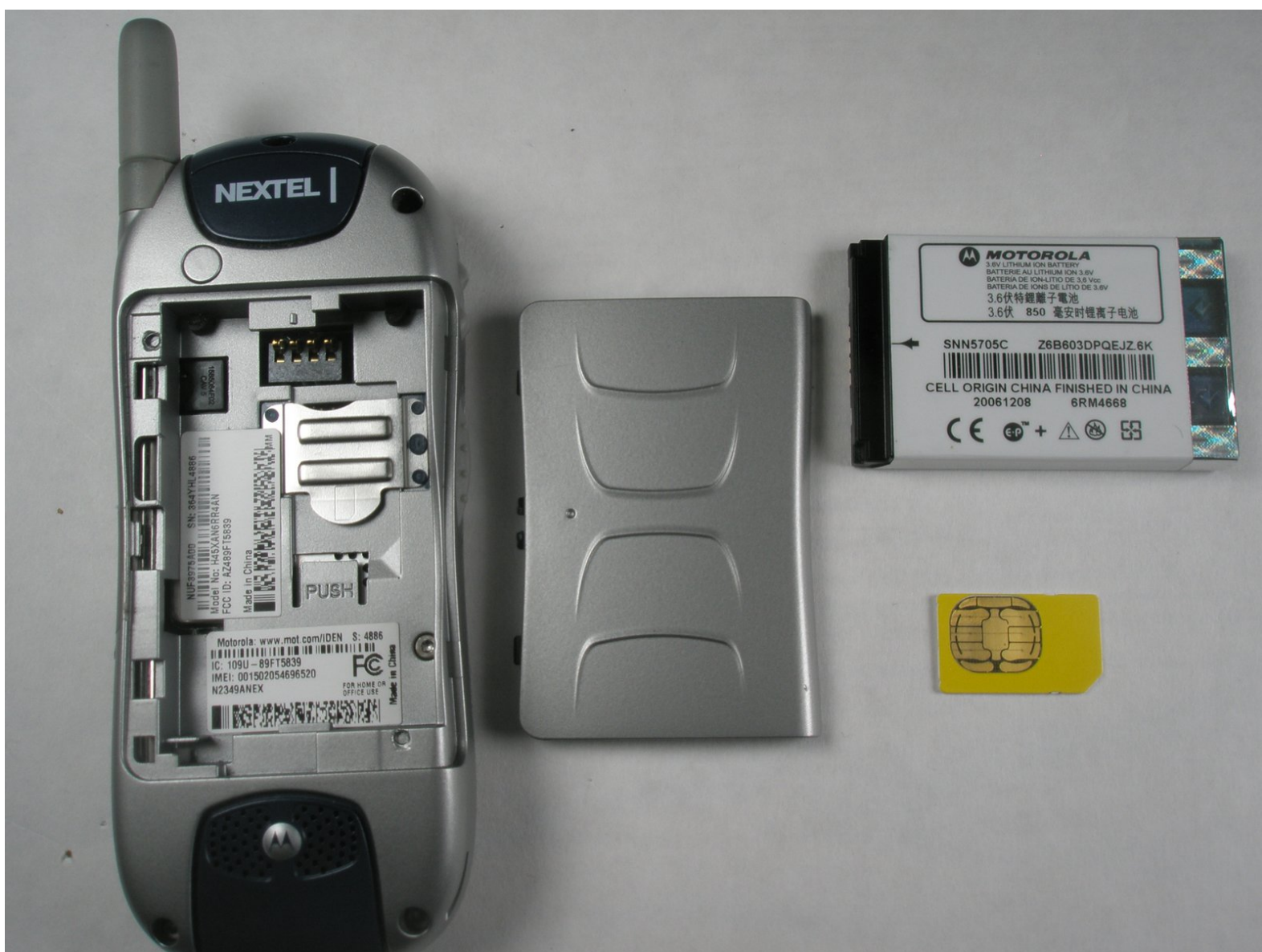




Disassembling Motorola i265 Rear Casing/Battery/SIM Card

Written By: Jonathan Uder



INTRODUCTION

This repair guide will explain how to remove the rear casing of the phone, the battery, and the SIM card.

TOOLS:

- [Spudger](#) (1)
-

Step 1 — Rear Casing/Battery/SIM Card



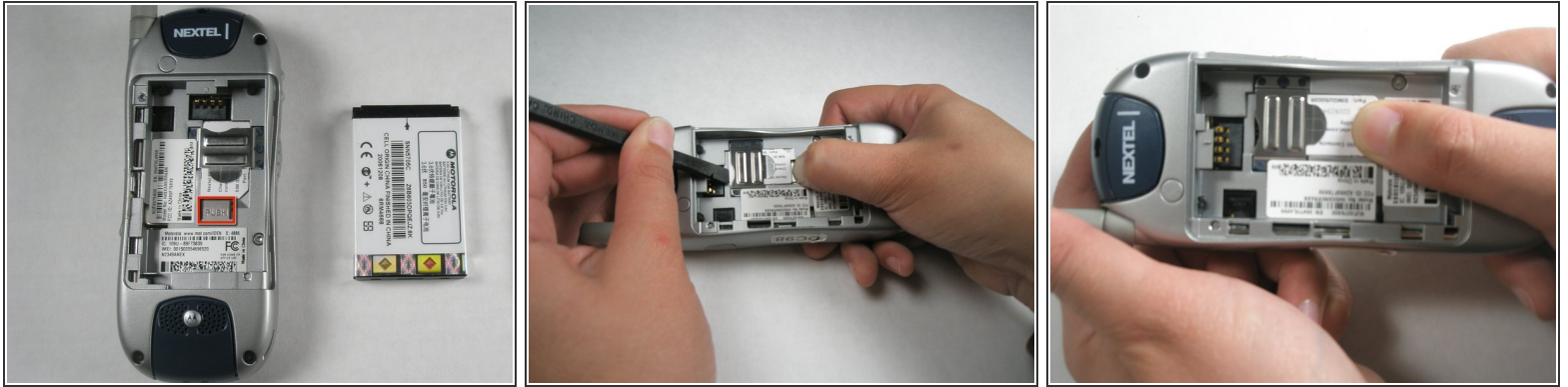
- Press thumb against the top of the rear casing as shown and push down as you slide the casing off of the body.
- ⓘ You should hear a click as the latches on the casing disengage.

Step 2



- To remove the battery, press thumb against the bottom edge of the battery and push towards the top of the phone.
- Then, lift the bottom edge of the battery upwards out of the body. Gently pull the battery towards yourself, and out of the phone.

Step 3



- To remove SIM card, press thumb against tab marked “PUSH.”
- While still pressing the PUSH tab, gently press spudger into the groove between the top of the SIM card and the body. Use spudger to slide SIM card toward the PUSH tab, so that when the spudger reaches the metal cover, the card itself is depressing the tab.
- Press your thumb against the exposed section of the SIM card, and slide it towards the rear of the phone until it is completely free of the metal cover.

To reassemble your device, follow these instructions in reverse order.

This document was last generated on 2019-07-23 02:08:34 AM.