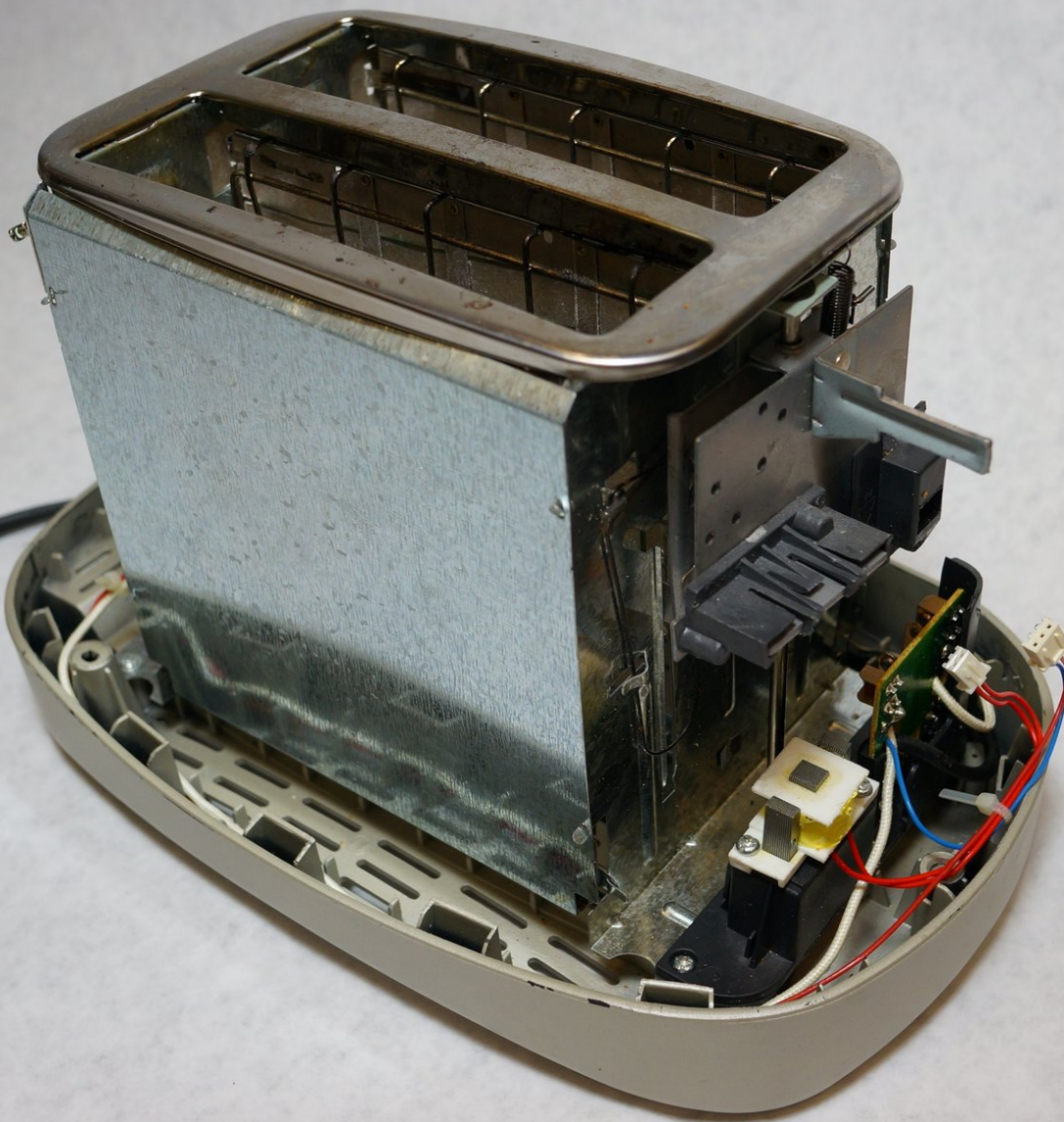




Oster 6329 Outer Shell Removal

This guide contains the steps required to remove the outer shell of Oster 6329 Toaster.

Written By: Isaac Williams



INTRODUCTION

Removing the outer shell is crucial to repairing any component of your toaster and must be done first before attempting any other guide.

TOOLS:

- [Phillips #1 Screwdriver](#) (1)
 - [Tweezers](#) (1)
-

Step 1 — Outer Shell Removal



- Using the Phillips-head #2 screwdriver, unscrew the three 1cm Phillips-head screws on the plastic base of the toaster to separate the outer metal shell from the plastic base.

Step 2



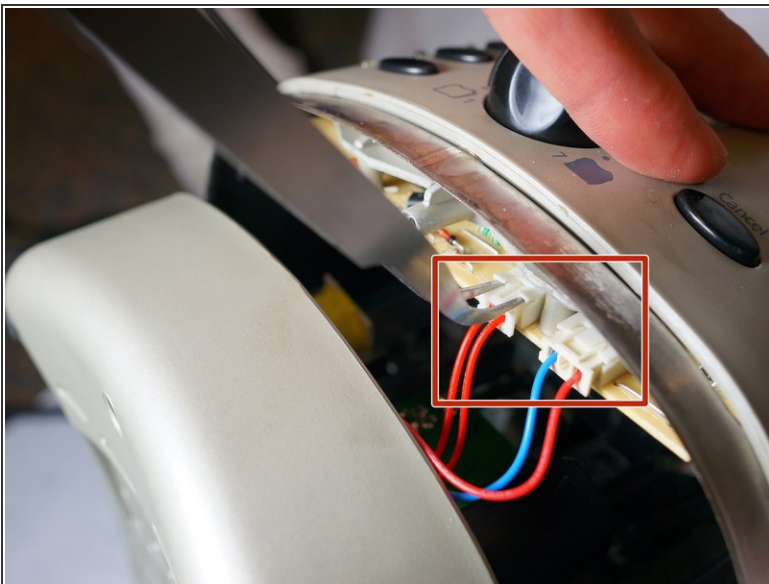
- Push the plastic push-down handle down and pull the plastic handle straight from metal arm.

Step 3



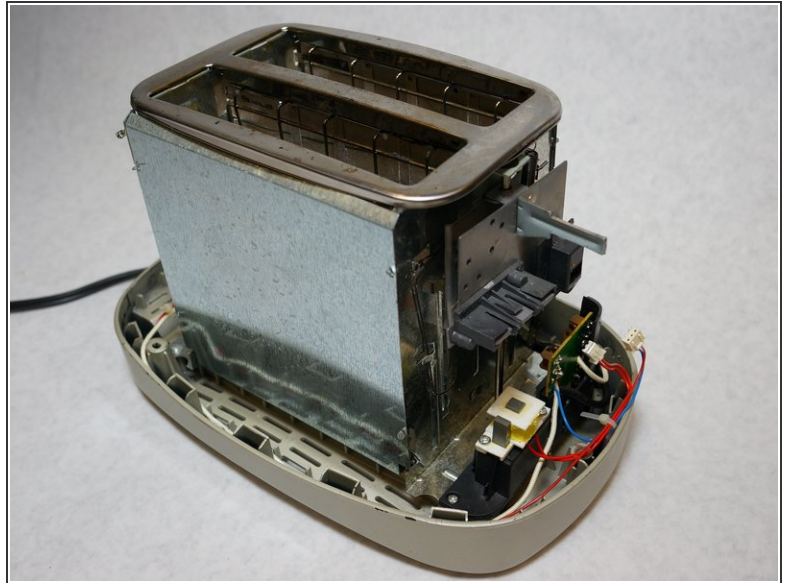
- Loosen the outer metal shell from the plastic base by holding the plastic base while pulling up on the metal shell.
- ⓘ Only lift the outer shell a little so as not to disconnect the cables that connect the circuit board.

Step 4




- Disconnect the cable clips from the circuit board using the tweezers to free the outer metal shell from the plastic base.

Step 5



- Lift the top outer metal shell.

 Carefully lift the outer metal shell at an angle so as not to damage the components in the front of the toaster.

To reassemble your device, follow these instructions in reverse order.