



Commodore 1341 Joystick Teardown

Written By: Andy Marsh



INTRODUCTION

Let's have a look inside a retro Commodore 64 joystick.

TOOLS:

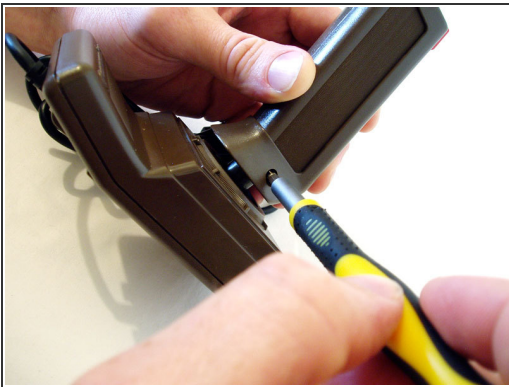
- [Phillips #0 Screwdriver](#) (1)
-

Step 1 — Commodore 1341 Joystick Teardown



- Introduced in 1984, the Commodore 1341 joystick was designed for use with the Commodore range of computers including the Commodore 64, 128, VIC20 and Commodore Plus4.
- This joystick connects to the retro computers using a 9 pin connection.

Step 2



- The joystick is held together by five phillips head screws. One screw is located on the handle and the remaining four are under the base.
- Once the screws have been removed you can pry the case apart using a flat head screw driver. Just be careful with the base as it is spring loaded and it can fly apart quite easily.

Step 3



- You will need to desolder the fire button cables from the board.
- Pry the case open but watch for the spring. There is also a rubber bung that sits beneath the black rocker shaft.
- Desolder the cables from the main joystick board and remove all of the components.
- Now you are ready to clean all of the joystick components and reassemble.

To reassemble your device, follow these instructions in reverse order.

This document was last generated on 2017-08-06 03:05:47 PM.