



The Internal Components of an Atari Lynx

This is a simple step-by-step guide to take apart an Atari Lynx to see it's internal components

Written By: John Lopez



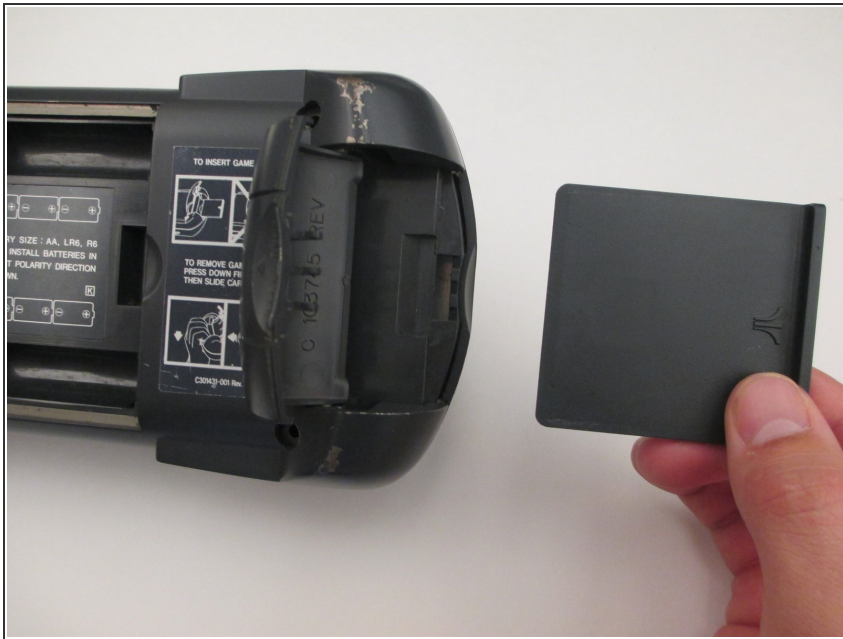
INTRODUCTION

This guide will show you how to disassemble your Atari Lynx before diving into any problems.

TOOLS:

- [Phillips #1 Screwdriver](#) (1)
-

Step 1 — Atari Lynx



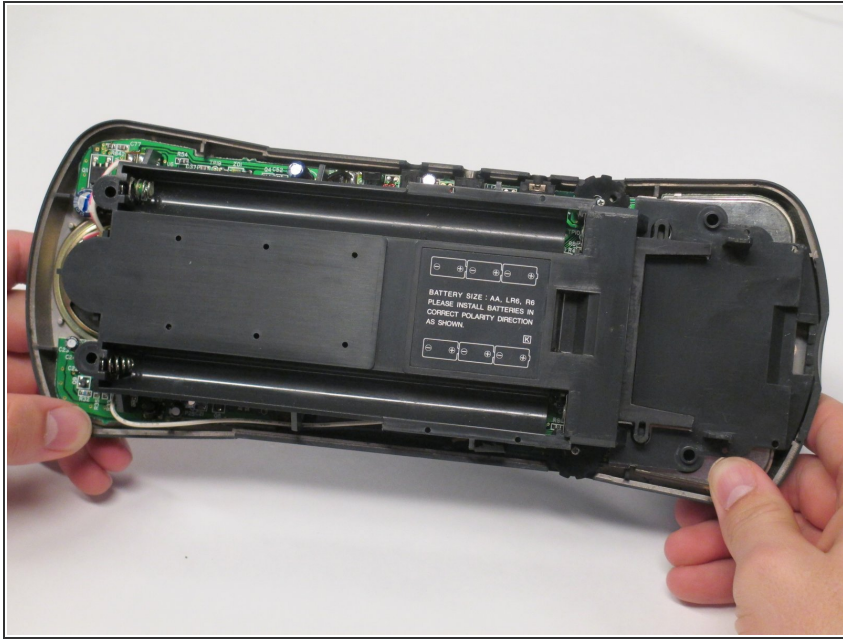
- Before disassembling your Atari Lynx, be sure the device is powered off.
- Remove any game in the console by opening the right latch and sliding the game to the right.

Step 2



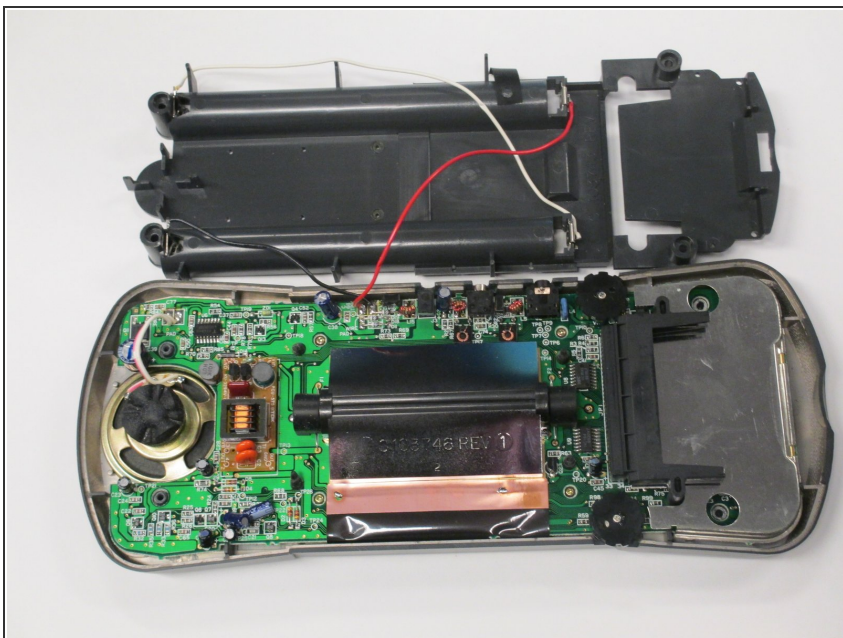
- Remove the four 35 mm Phillips #1 screws at each corner of the backside on the Atari Lynx.
- Pinch the rear panel with your fingers and lift away from the Atari.

Step 3



- Remove the battery panel by pinching the sides with your fingers and lifting it away from the Atari.
- ⚠ Be sure not to tear any wires attached to battery panel.

Step 4



- Remove the control panel by pinching the sides with your fingers and lifting it away from the Atari.
- ⚠ Be sure not to tear the speaker wire while removing the control panel.

To reassemble your device, follow these instructions in reverse order.

This document was last generated on 2019-08-17 03:53:58 AM.